

Compensating coupling PM7, series CM2

1827001634

Flexible
couplings

2024-04-04

AVENTICS Flexible couplings



Technical data

Industry

For series

For series

Thread size

Weight

Material

Housing material

Surface housing

Part No.

Industrial

to mount on cylinder PRA, TRB, CCL-IS/-IC, CCI,
SSI, KPZ, 167, CVI, RPC, ITS
with plate

ITS

M36x2

3.4 kg

Steel, chrome-plated

galvanized

1827001634

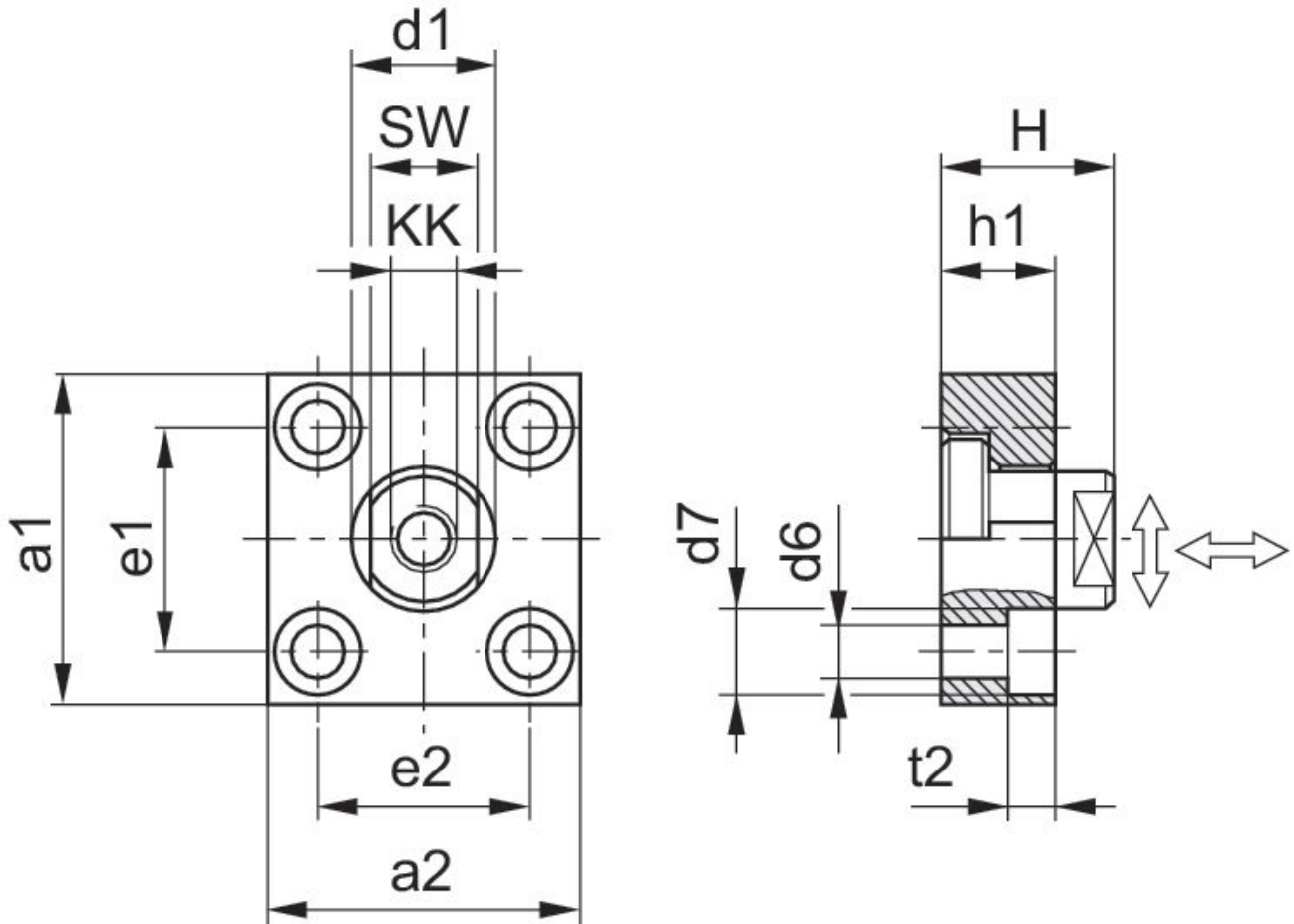
Compensating coupling PM7, series CM2

1827001634

Flexible couplings

2024-04-04

Dimensions



| KK | Part No. | a1 | a2 | d1 h11 | d6 H13 | d7 H13 | e1 H13 | e2 | h1 |
|----------|------------|-----|-----|--------|--------|--------|----------|----------|----|
| M10x1.25 | 1827001629 | 60 | 37 | 20 | 6.6 | 11 | 36 ±0,15 | 23 ±0,15 | 15 |
| M12x1.25 | 1827001630 | 60 | 56 | 25 | 9 | 15 | 42 ±0,2 | 38 ±0,2 | 20 |
| M16x1.5 | 1827001631 | 80 | 80 | 30 | 11 | 18 | 58 ±0,2 | 58 ±0,2 | 20 |
| M20x1.5 | 1827001632 | 90 | 90 | 40 | 14 | 20 | 65 ±0,3 | 65 ±0,3 | 20 |
| M27x2 | 1827001633 | 90 | 90 | 40 | 14 | 20 | 65 ±0,3 | 65 ±0,3 | 20 |
| M36x2 | 1827001634 | 125 | 125 | 60 | 18 | 26 | 90 ±0,3 | 90 ±0,3 | 30 |

| KK | t2 | H | SW | Tightening torque for the coupling pin Ma ± 5% | Axial play min./max. | Radial play min./max. |
|----------|----|----|----|--|----------------------|-----------------------|
| M10x1.25 | 7 | 24 | 17 | 17 Nm | 0,4 - 0,8 mm | 1,9 - 2,3 mm |
| M12x1.25 | 9 | 30 | 19 | 29 Nm | 0,4 - 0,8 mm | 1,9 - 2,3 mm |
| M16x1.5 | 11 | 32 | 24 | 71 Nm | 0,4 - 0,8 mm | 1,9 - 2,3 mm |
| M20x1.5 | 13 | 35 | 36 | 138 Nm | 0,4 - 0,8 mm | 1,9 - 2,3 mm |
| M27x2 | 13 | 35 | 36 | 350 Nm | 0,4 - 20,31 mm | 1,9 - 2,3 mm |
| M36x2 | 17 | 55 | 50 | 1080 Nm | 0,4 - 0,95 mm | 2,8 - 3,4 mm |