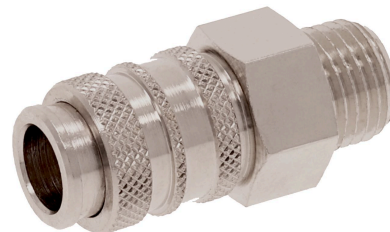


AVENTICS Series CP1 Couplings

The AVENTICS Series CP1 of safe couplings using single snap-on coupling are robust, safe and fit two different plug-in profiles, the EURO- profile and the ARO profile.



Technical data

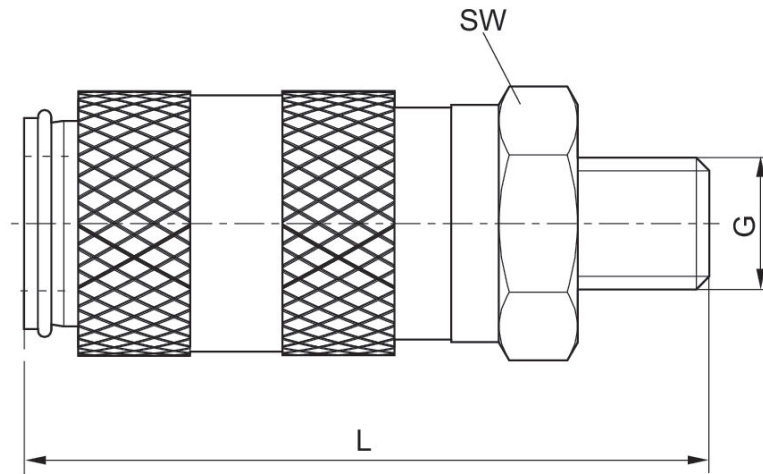
Industry	Industrial
Port D	NW 2,7
Port G	M5
Compressed air connection type	External thread
Nominal width NW	2.7 mm
Nominal flow Qn	210 l/min
Min. working pressure	0 bar
Max. working pressure	16 bar
Min. ambient temperature	-10 °C
Max. ambient temperature	90 °C
Min. medium temperature	-10 °C
Max. medium temperature	90 °C
Medium	Compressed air
Delivery unit	2 piece
Weight per piece	0.008 kg
Housing material	Brass
Surface housing	nickel-plated
Material release bushing	Brass
Surface release bushing	nickel-plated
Seal material	Acrylonitrile butadiene rubber
Material connector	Brass
Surface connector	nickel-plated
	1823376006

Lock coupling, Series CP1

2024-02-20

1823376006

Dimensions



Part No.	Port G	Nominal width NW	L	SW
1823376006	M5	2,7 mm	26	9
R412010276	G 1/4	5 mm	39	17