

Coupling plug with internal thread

1823373002

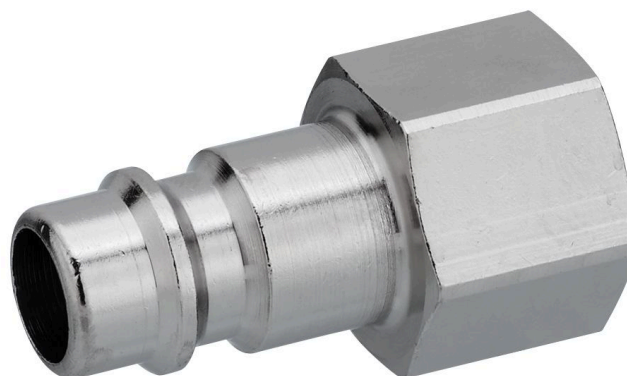
Series CP1

2024-10-23

- $Q_n = 3200$ l/min

AVENTICS Series CP1 Couplings

The AVENTICS Series CP1 of safe couplings using single snap-on coupling are robust, safe and fit two different plug-in profiles, the EURO- profile and the ARO profile.



Technical data

Industry

Industrial

Note

Archive product: Do not use in new constructions!

Silicon

silicone-free

Port D

NW 7,2

Port G

G 3/8

Compressed air connection type

Coupling plug

Nominal width NW

7.2 mm

Min. working pressure

0 bar

Max. working pressure

16 bar

Min. ambient temperature

-10 °C

Max. ambient temperature

90 °C

Min. medium temperature

-10 °C

Max. medium temperature

90 °C

Medium

Compressed air

Delivery unit

10 piece

Weight per piece

0.025 kg

Housing material

Brass

Surface housing

nickel-plated

1823373002

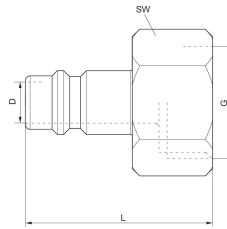
Coupling plug with internal thread

1823373002

Series CP1

2024-10-23

Dimensions



Part No.	Port G	Nominal width NW	L	SW
R412028883	G 1/4	7,2 mm	32	17
R412028884	G 3/8	7,2 mm	32	19
1823373081	G 1/4	7,8 mm	33	17
1823373082	G 3/8	7,8 mm	33	19
R412028889	G 1/2	7,8 mm	35	24