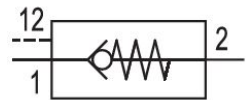


## AVENTICS Series NR02 Non-return valves

AVENTICS Series NR02, thanks to an array of connection options, the NR non-return valves can be screwed in separately and are also suitable for direct installation in piping. NR02 non-return valves are pneumatically pilot operated.



## Technical data

Industry	Industrial
Type	Poppet valve
Mounting	installing in piping
Compressed air connection 1	G 1
Compressed air connection type 1	Internal thread
Compressed air connection 2	G 1
Compressed air connection type 2	Internal thread
Compressed air connection 12	G 1/8
Nominal flow Qn 1 to 2	5800 l/min
Nominal flow Qn 2 to 1	4800 l/min
Min. working pressure	1 bar
Max. working pressure	12 bar
Min. ambient temperature	-10 °C
Max. ambient temperature	60 °C
Min. medium temperature	-10 °C
Max. medium temperature	60 °C
Medium	Compressed air
Weight	0.52 kg

# Pilot-operated non-return valve, Series NR02

0821003030

Series  
NR02

2024-01-23

## Material

Housing material

Aluminum

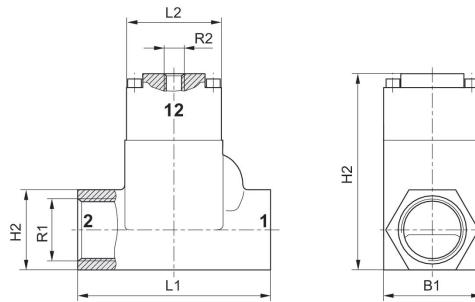
Seal material

Acrylonitrile butadiene rubber

Part No.

0821003030

## Dimensions



	R1	R2	L1	L2	H1	H2	B1
0821003029	G 3/4	G 1/8	100	50	41	101	50
0821003030	G 1	G 1/8	100	50	41	101	50