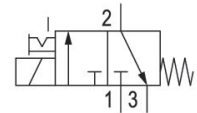


- Various connection options possible
- Assembly takes place on manifold strips
- Extensive voltage range
- ATEX version available

## AVENTICS Series DO Directional valves

The AVENTICS Series DO offer a simple, reliable and robust solution for all classical pilot control functions with direct electrical operation.



## Technical data

Industry

Industrial

Activation

Electrically

Note

Archive product: Do not use in new constructions!

Frame size

DO22

Valve type

Poppet valve

Switching principle

3/2, with spring return

Valve function

NC

Sealing principle

Soft seal

Connection type

Plate valve with pipe connection

Manual override

with detent

Compressed air connection

Base plate

Compressed air connection input

Base plate

Compressed air connection output

M5

Nominal flow Qn

61 l/min

Nominal flow Qn 1 to 2

61 l/min

Nominal flow Qn 2 to 3

74 l/min

# 3/2-directional valve, Series DO22, 22 mm

Series DO

0820019640

2024-10-01

---

Min. working pressure	0 bar
Max. working pressure	10 bar
Electrical connection type	Plug
Electrical connection size	ISO 6952, form B
Protection class with connection	IP65
Operational voltage	230 V AC
Operational voltage AC at 50 Hz	230 V
Voltage tolerance AC 50 Hz	-10 % / +10 %
Coil width	22 mm
Compatibility index	14
Holding power AC 50 Hz	9.7 VA
Switch-on power AC 50 Hz	12.6 VA
Duty cycle	100 %
Min. ambient temperature	-10 °C
Max. ambient temperature	50 °C
Min. medium temperature	-10 °C
Max. medium temperature	50 °C
Medium	Compressed air
Min. oil content of compressed air	0 mg/m <sup>3</sup>
Max. oil content of compressed air	5 mg/m <sup>3</sup>
Max. particle size	5 µm
Mounting screws	M3
Weight	0.096 kg
<b>Material</b>	
Housing material	Plastic
Seal material	Fluorocautchouc
Part No.	0820019640

## Technical information

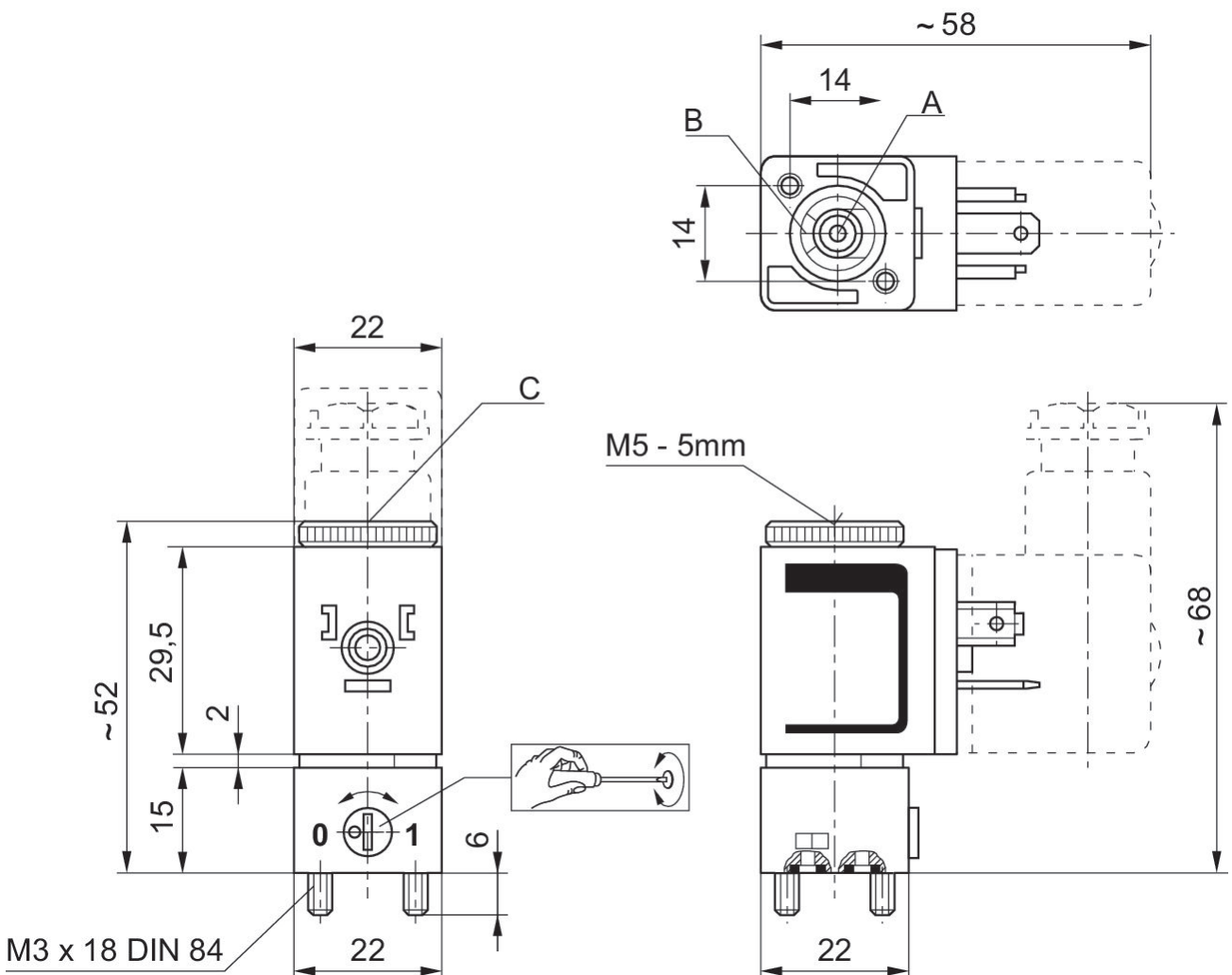
The min. control pressure must be adhered to, since otherwise faulty switching and valve failure may result!

The pressure dew point must be at least 15 °C less than ambient and medium temperature and may not exceed 3 °C.

The oil content of compressed air must remain constant during the life cycle.

Use only the approved oils from AVENTICS. Further information can be found in the "Technical information" document (available in <https://www.emerson.com/en-us/support>).

## Dimensions



A = Port 1  
B = Port 2  
C = Port 3