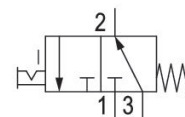


AVENTICS Series DO Directional valves

The AVENTICS Series DO offer a simple, reliable and robust solution for all classical pilot control functions with direct electrical operation.



Technical data

Industry	Industrial
Activation	Electrically
Note	Note: NO via port 3
Frame size	DO22
Valve type	Poppet valve
Basic valve equipment	Basic valve without coil
Switching principle	3/2, with spring return
Valve function	NO
Sealing principle	Soft seal
Connection type	Plate connection
Manual override	with detent
Compressed air connection	Base plate
Compressed air connection input	Base plate
Compressed air connection output	Base plate
Nominal flow Qn	48 l/min
Nominal flow Qn 1 to 2	48 l/min
Nominal flow Qn 2 to 3	56 l/min

3/2-directional valve, Series DO22

Series DO

0820046990

2024-05-21

Min. working pressure	0 bar
Max. working pressure	10 bar
Electrical connection type	Plug
Electrical connection size	ISO 6952, form B
Protection class with connection	IP65
Coil width	22 mm
Compatibility index	14
Duty cycle	100 %
ATEX	Suitable for ATEX
Min. ambient temperature	-10 °C
Max. ambient temperature	50 °C
Min. medium temperature	-10 °C
Max. medium temperature	50 °C
Medium	Compressed air
Min. oil content of compressed air	0 mg/m ³
Max. oil content of compressed air	5 mg/m ³
Max. particle size	5 µm
Mounting on manifold strip	PRS strip
Mounting screws	M3
Material	
Housing material	Plastic
Seal material	Fluorocautchouc
Part No.	0820046990

Technical information

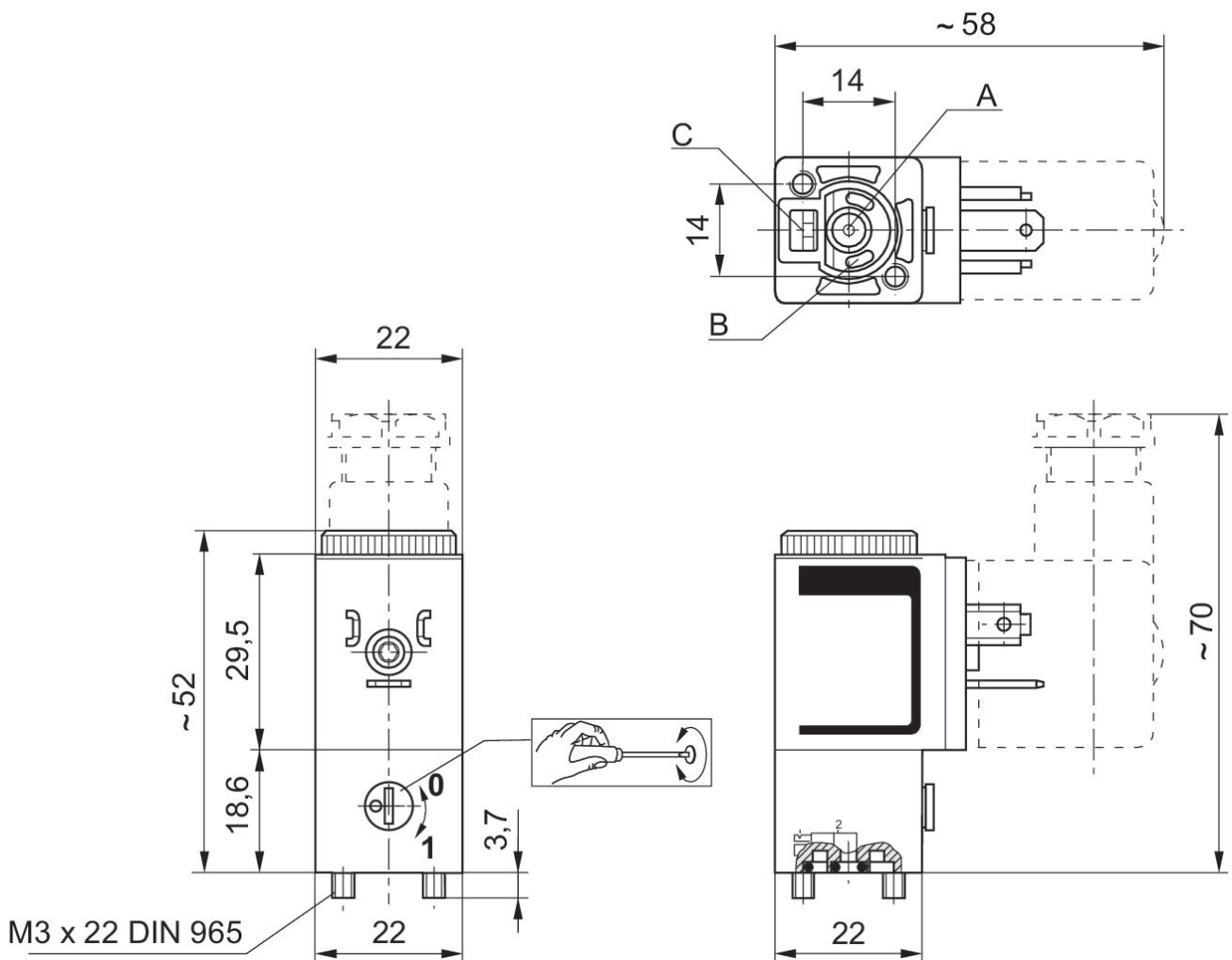
The min. control pressure must be adhered to, since otherwise faulty switching and valve failure may result!

The pressure dew point must be at least 15 °C less than ambient and medium temperature and may not exceed 3 °C.

The oil content of compressed air must remain constant during the life cycle.

Use only the approved oils from AVENTICS. Further information can be found in the "Technical information" document (available in <https://www.emerson.com/en-us/support>).

Dimensions



A = Port 1
B = Port 2
C = Port 3