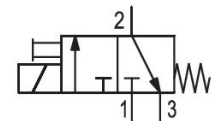


- Various connection options possible
- Assembly takes place on manifold strips
- Extensive voltage range
- ATEX version available

AVENTICS Series DO Directional valves

The AVENTICS Series DO offer a simple, reliable and robust solution for all classical pilot control functions with direct electrical operation.



Technical data

Industry	Industrial
Activation	Electrically
Note	Archive product: Do not use in new constructions!
Frame size	DO30
Valve type	Poppet valve
Switching principle	3/2, with spring return
Valve function	NC
Sealing principle	Soft seal
Connection type	Plate valve with pipe connection
Manual override	without detent
Compressed air connection	CNOMO
Compressed air connection input	CNOMO
Compressed air connection output	CNOMO
Compressed air connection, exhaust	M5
Nominal flow Qn	68 l/min
Nominal flow Qn 1 to 2	68 l/min

3/2-directional valve, Series DO30

Series DO

0820019525

2024-10-14

Nominal flow Qn 2 to 3	90 l/min
Min. working pressure	0 bar
Max. working pressure	10 bar
Electrical connection type	Plug
Electrical connection size	EN 175301-803, form A
Protection class with connection	IP65
Operational voltage	230 V AC
Operational voltage AC at 50 Hz	230 V
Voltage tolerance AC 50 Hz	-10 % / +10 %
Coil width	30 mm
Pilot valve width	30 mm
Compatibility index	15
Power consumption	Higher voltage tolerance
Holding power AC 50 Hz	9.1 VA
Switch-on power AC 50 Hz	12.6 VA
Duty cycle	100 %
Standards	CNOMO / NFE 49-003-1
Min. ambient temperature	-10 °C
Max. ambient temperature	50 °C
Min. medium temperature	-10 °C
Max. medium temperature	50 °C
Medium	Compressed air
Min. oil content of compressed air	0 mg/m ³
Max. oil content of compressed air	5 mg/m ³
Max. particle size	5 µm
Mounting on manifold strip	P-strip
Mounting screws	M4
Weight	0.16 kg
Material	
Housing material	Plastic
Seal material	Fluorocaoutchouc

Part No.

0820019525

Technical information

ATEX optional: ATEX version can be produced by combining the basic valve without coil with an ATEX coil. ATEX ID: see ATEX coils catalog page.

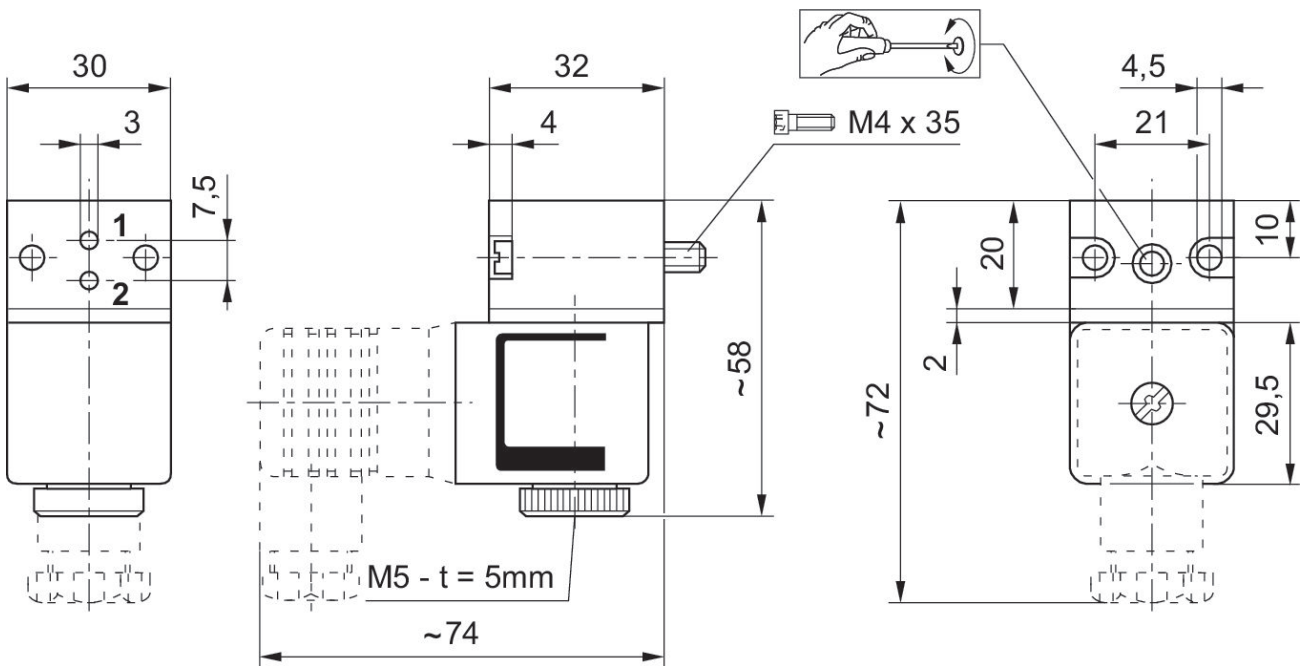
The min. control pressure must be adhered to, since otherwise faulty switching and valve failure may result!

The pressure dew point must be at least 15 °C less than ambient and medium temperature and may not exceed 3 °C.

The oil content of compressed air must remain constant during the life cycle.

Use only the approved oils from AVENTICS. Further information can be found in the "Technical information" document (available in <https://www.emerson.com/en-us/support>).

Dimensions



t = depth