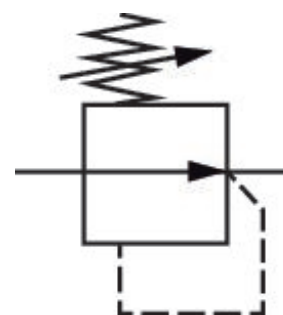


Pressure regulator, Series 645

G645ARS22PA00H0

General series information
AVENTICS Series 645 Pressure Regulator

- The Series 645 Railway Regulators are used to regulate the pressure on railway applications such as control brakes, horns, pantographs, and sanding systems to increase wheel-to-rail friction in poor weather conditions. They are available in four versions, including high and low flow, in ported or subbase mounted configurations. The units meet railway regulations for Fire Safety (EN 45545: HL3), Shock & Vibration (EN 61373: Cat 1 Class B), and Corrosion Resistance (ISO 9227). These robust, high flow products are available with up to 10 bar (145 PSI) output pressure and three different adjustment methods including screw, t-handle, or lockable knob.



Technical data

Industry	Rail
Note	Complies with standards for railway applications
Function	high flow, inline ported
Parts	Pressure regulator
Adjustment options	adjustment screw
Pressure gauge	Without pressure gauge, with transition plate
Mounting orientation	Any
Port	G 1/4
Compressed air connection standard	according to ISO 228-1
Nominal flow Qn	1650 l/min
Regulation range min.	0.5 bar
Regulation range max.	10 bar
Working pressure min.	1 bar
Working pressure max	16 bar
Min. ambient temperature	-40 °C
Max. ambient temperature	70 °C
Medium	Compressed air

Min. medium temperature	-40 °C
Max. medium temperature	70 °C
Weight	0.247 kg

Material

Housing material	Aluminum Brass Polyamide
Surface housing	anodized
Seal material	Acrylonitrile butadiene rubber
Part No.	G645ARS22PA00H0

Technical information

Order pressure gauge separately

The min. control pressure must be adhered to, since otherwise faulty switching and valve failure may result!

The pressure dew point must be at least 15 °C less than ambient and medium temperature and may not exceed 3 °C.

The oil content of compressed air must remain constant during the life cycle.

Dimensions

