

Double nipple, Series PE5

R412010016

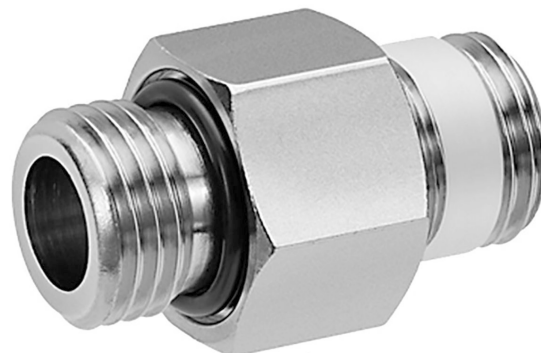
Series CP1

2024-10-23

- $Q_n = 3200 \text{ l/min}$

AVENTICS Series CP1 Couplings

The AVENTICS Series CP1 of safe couplings using single snap-on coupling are robust, safe and fit two different plug-in profiles, the EURO- profile and the ARO profile.



Technical data

Industry

Industrial

Port D

G 1/4

Port G

G 1/4

Compressed air connection type

External thread

Delivery unit

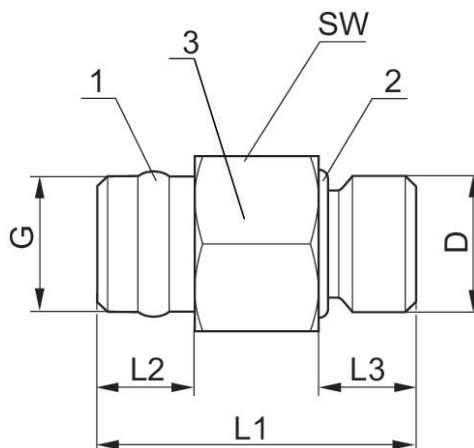
2 piece

Weight per piece

0.04 kg

R412010016

Dimensions



Double nipple, Series PE5

R412010016

Series CP1

2024-10-23

1) sealing ring Polytetrafluorethylen

2) O-ring - acrylonitrile butadiene rubber

3) Housing - brass, nickel-plated

Part No.	Port G	Port D	L1	L2	L3	SW
R412010015	G 1/4	G 1/8	30	10	8.5	17
R412010016	G 1/4	G 1/4	30	10	8.5	17