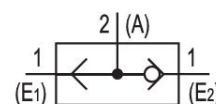


## Shuttle valves (OR)



### Technical data

Industry	Industrial
Sealing principle	Soft seal
Type	Poppet valve
Medium	Compressed air
Max. particle size	5 µm
Min. ambient temperature	-20 °C
Max. ambient temperature	70 °C
Min. medium temperature	-20 °C
Max. medium temperature	70 °C
Min. oil content of compressed air	0 mg/m <sup>3</sup>
Max. oil content of compressed air	1 mg/m <sup>3</sup>
Compressed air connection input	G 1/4
Compressed air connection output	G 1/4
Nominal width NW	5 mm
Min. working pressure	0.3 bar
Max. working pressure	10 bar
Weight	0.13 kg
Housing material	Aluminum
Seal material	Acrylonitrile butadiene rubber

# Shuttle valves (OR)

2023-10-11

5340170100

---

Material threaded bushing

Aluminum

Part No.

5340170100

## Technical information

The pressure dew point must be at least 15 °C less than ambient and medium temperature and may not exceed 3 °C.

The oil content of compressed air must remain constant during the life cycle.

Use only the approved oils from AVENTICS. Further information can be found in the “Technical information” document (available in <https://www.emerson.com/en-us/support>).

The min. control pressure must be adhered to, since otherwise faulty switching and valve failure may result!

The pressure dew point must be at least 15 °C less than ambient and medium temperature and may not exceed 3 °C.

The oil content of compressed air must remain constant during the life cycle.

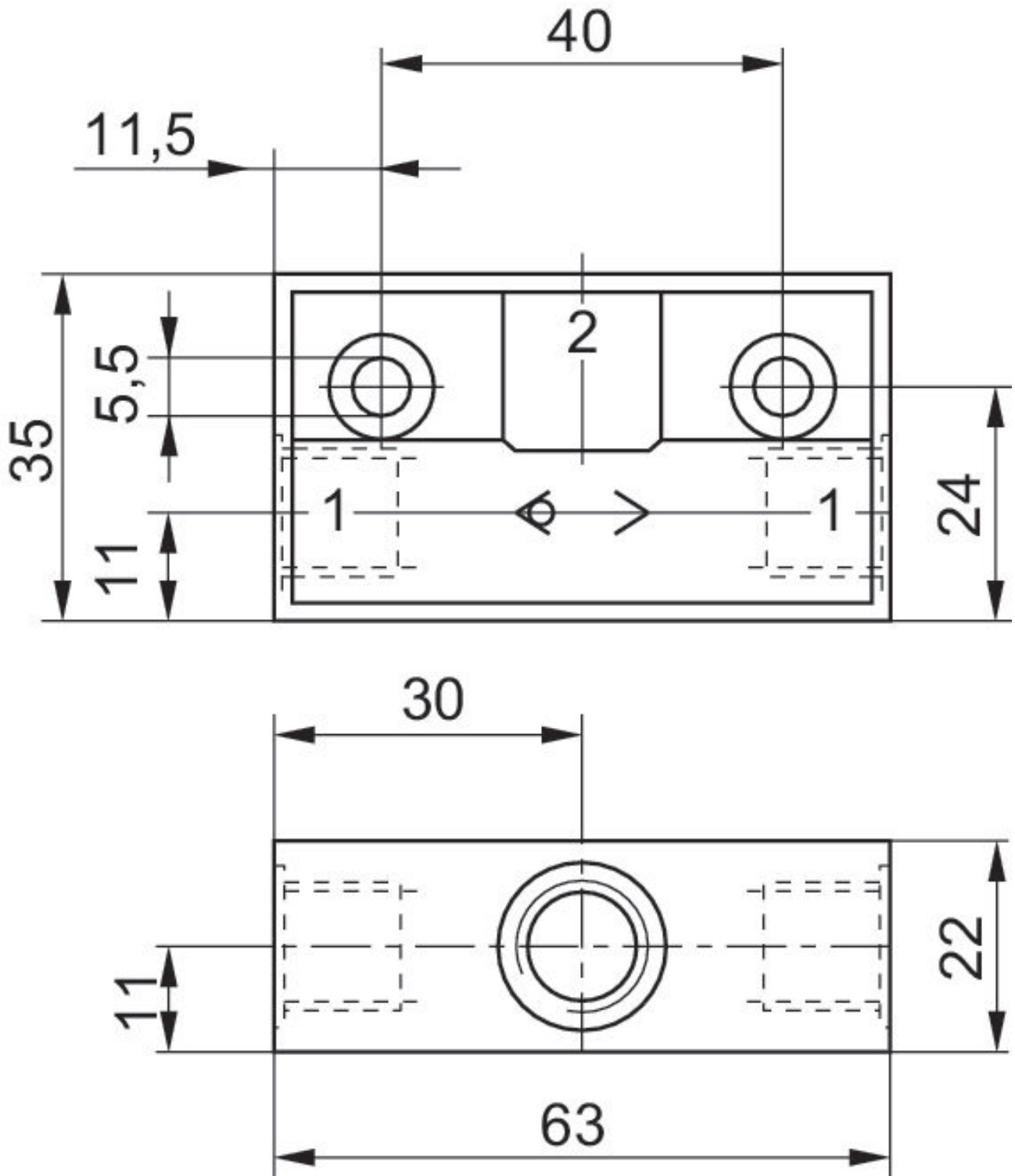
Use only the approved oils from AVENTICS. Further information can be found in the “Technical information” document (available in <https://www.emerson.com/en-us/support>).

# Shuttle valves (OR)

2023-10-11

5340170100

Fig. 4



# Shuttle valves (OR)

2023-10-11

5340170100

Fig. 3

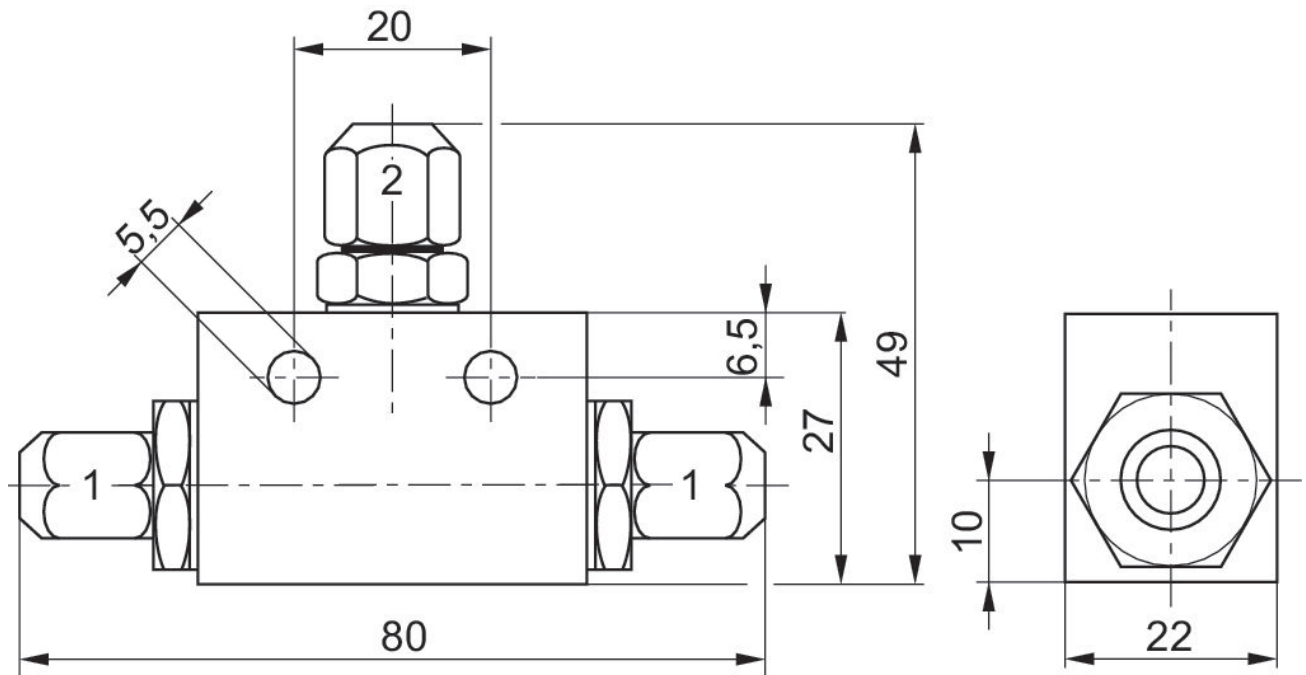
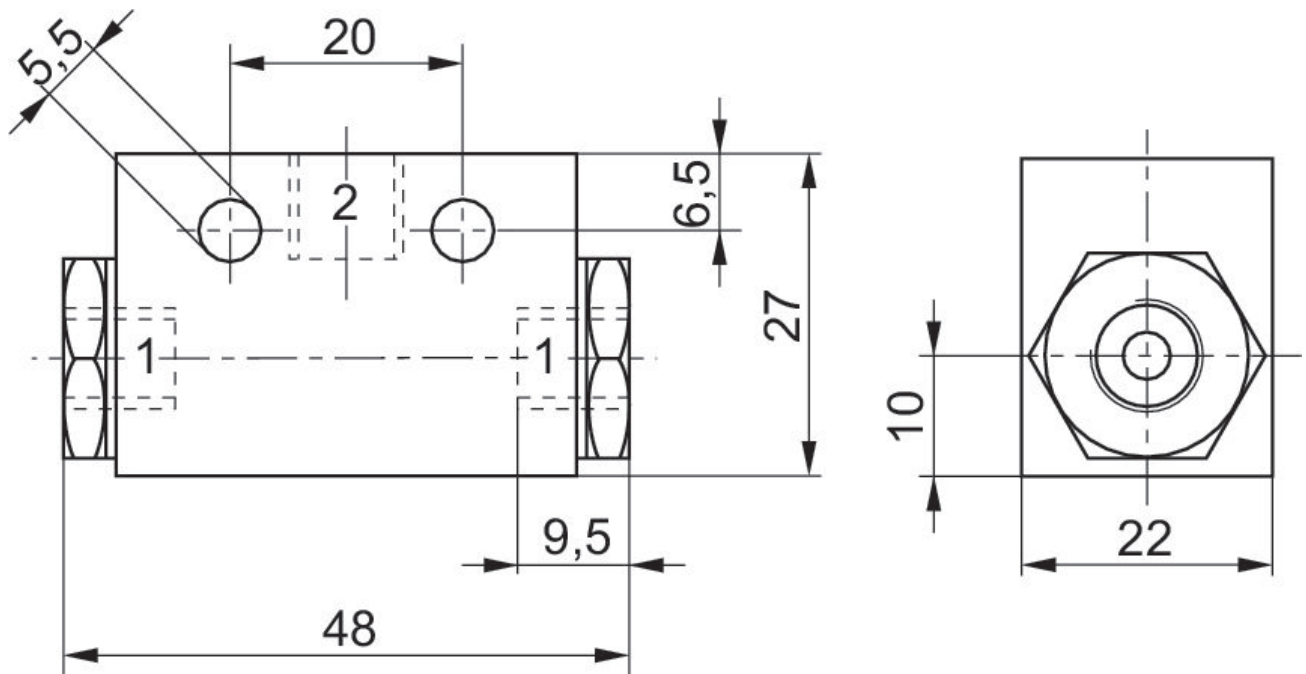


Fig. 2



# Shuttle valves (OR)

2023-10-11

5340170100

Fig. 1

