

Check-choke valve, Series CC01

0821200009

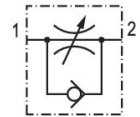
Series
CC01

2024-01-11

- $Q_n = 32 \text{ l/min} \dots 5600 \text{ l/min}$

AVENTICS Series CC01 Check-choke valves

The AVENTICS Series CC check-choke valves are designed for nominal flows from 32 to 5,600 l/min. The different versions are available with a push-in fitting or internal thread.



Technical data

Industry	Industrial
Port 1	G 1/8
Port 2	G 1/8
Throttle bore \varnothing	1 mm
direction of throttle	1 > 2 2 > 1
Nominal flow Q_n 1 to 2	32 l/min
Compressed air connection type 1	Internal thread
Compressed air connection type 2	Internal thread
Medium	Compressed air
Min. working pressure	0.5 bar
Max. working pressure	10 bar
Min. ambient temperature	0 °C
Max. ambient temperature	80 °C
Min. medium temperature	0 °C
Max. medium temperature	80 °C
Weight	0.04 kg

Check-choke valve, Series CC01

0821200009

Series
CC01

2024-01-11

Material

Housing material	Aluminum
Surface housing	anodized
Seal material	Acrylonitrile butadiene rubber
Material flow control screw	Steel, chrome-plated
Surface flow control screw	galvanized
Part No.	0821200009

Technical information

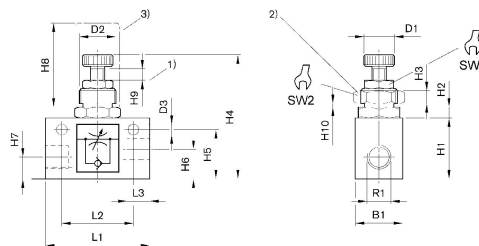
The min. control pressure must be adhered to, since otherwise faulty switching and valve failure may result!

The pressure dew point must be at least 15 °C less than ambient and medium temperature and may not exceed 3 °C.

The oil content of compressed air must remain constant during the life cycle.

Use only the approved oils from AVENTICS. Further information can be found in the “Technical information” document (available in <https://www.emerson.com/en-us/support>).

Dimensions



1) throttle setting range 2) nut for control panel installation 3) protective cap

Part No.	Port G	R1	B1	D1	D2	D3	H1	H2	H3
0821200009	G 1/8	G 1/8	16	10	M12x1	4.5	20	4	4
0821200008	G 1/8	G 1/8	16	10	M12x1	4.5	20	4	4
0821200005	G 1/4	G 1/4	25	13	M20x1,5	5.5	32	5.5	6

Part No.	H4	H5	H6	H7	H8	H9	H10	L1	L2
0821200009	56	16.5	8	8	35	4	3.5	35	25
0821200008	56	16.5	8	8	35	4	3.5	35	25
0821200005	70	26	15	11	40	5	3.5	55	38

Part No.	L3	SW1	SW2
0821200009	8	10	17
0821200008	8	10	17
0821200005	12	13	24