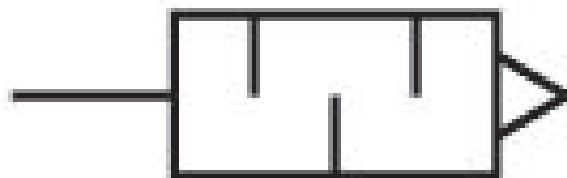
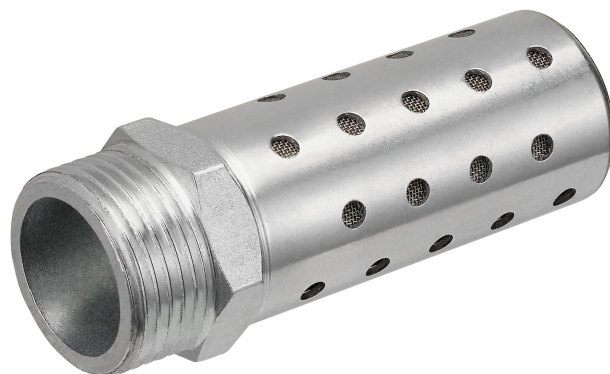


Silencers, series S11

R412010248

General series information
AVENTICS Series S11 Silencers

- AVENTICS Series S11 Silencers offers a broad range of silencers even in Metal or plastic to reduce the noise when Pneumatic products come to exhaust.



Technical data

| | |
|--------------------------------|-----------------|
| Industry | Industrial |
| Medium | Compressed air |
| Working pressure min. | 0 bar |
| Working pressure max | 15 bar |
| Min. ambient temperature | -10 °C |
| Max. ambient temperature | 150 °C |
| Compressed air connection | G 3/4 |
| Compressed air connection type | External thread |
| Sound pressure level | 102 dB |
| Nominal flow Qn | 6455 l/min |
| Delivery unit | 2 piece |

Material

Silencer material

Metal braiding

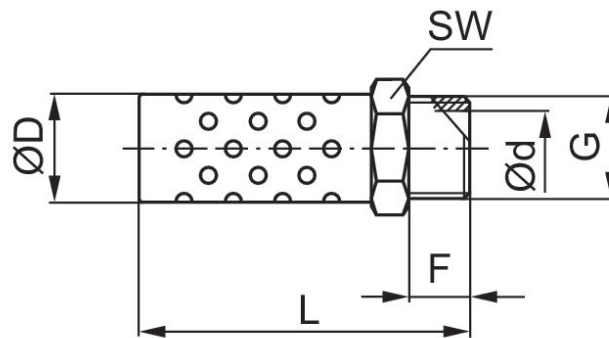
Material thread

Aluminum

Part No.

R412010248

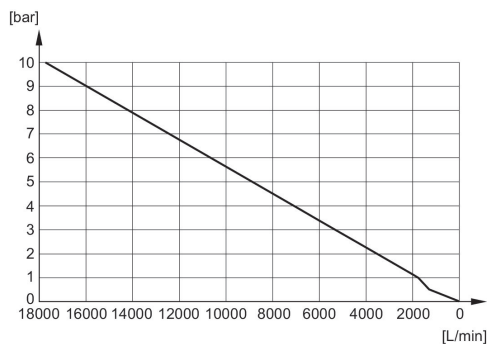
Dimensions



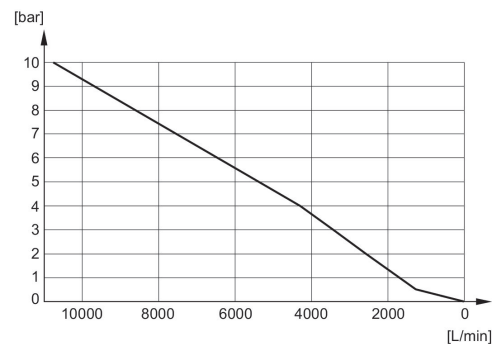
| Part No. | Port G | L | F | D | d | SW |
|------------|--------|------|------|------|-----|----|
| R412010283 | G 1/8 | 33.5 | 6 | 10.4 | 6 | 11 |
| R412010245 | G 1/4 | 42.5 | 8.5 | 13.4 | 8.5 | 14 |
| R412010246 | G 3/8 | 49.2 | 9 | 16.5 | 12 | 17 |
| R412010247 | G 1/2 | 65.2 | 11 | 21.5 | 15 | 22 |
| R412010248 | G 3/4 | 74.5 | 12 | 26.5 | 20 | 27 |
| R412010249 | G 1 | 91 | 15.5 | 32.3 | 26 | 34 |

Sound pressure level measured at 6 bar at 1 m distance

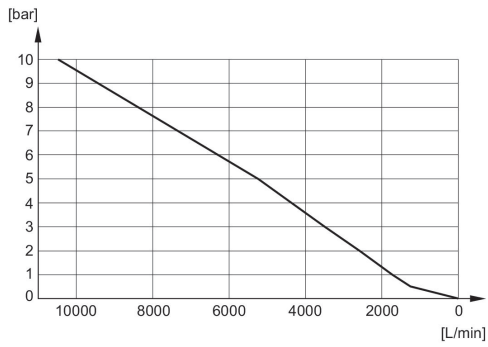
Flow diagram R412010249



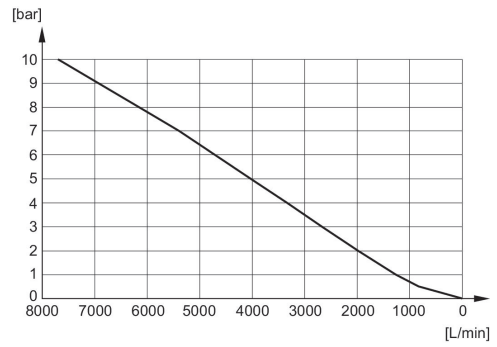
Flow diagram R412010248



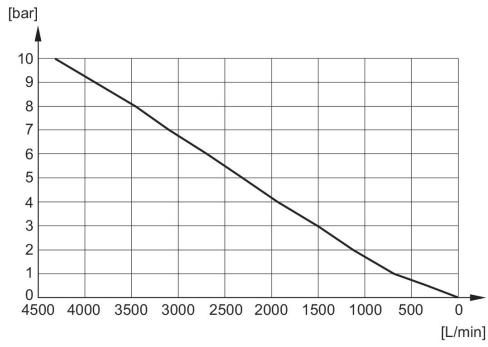
Flow diagram
R412010247



Flow diagram
R412010246



Flow diagram
R412010245



Flow diagram
R412010283

