

## AVENTICS Series SH

The AVENTICS Series GPC is distinguished by high side load capacity and torsion protection. The drive and guide rods are robust and precise with high torque and transverse force absorption.



## Technical data

|                                    |                      |
|------------------------------------|----------------------|
| Industry                           | Industrial           |
| Piston Ø                           | 25 mm                |
| Piston rod Ø                       | 10 mm                |
| Stroke                             | 20 mm                |
| Functional principle               | Double-acting        |
| Bearing type                       | Plain bearing        |
| Magnetic piston                    | with magnetic piston |
| Cushioning                         | elastic              |
| Min. working pressure              | 1.5 bar              |
| Max. working pressure              | 8 bar                |
| Min. ambient temperature           | -10 °C               |
| Min. ambient temperature           | 14 °F                |
| Max. ambient temperature           | 70 °C                |
| Max. ambient temperature           | 158 °F               |
| Min. oil content of compressed air | 0 mg/m <sup>3</sup>  |
| Max. oil content of compressed air | 5 mg/m <sup>3</sup>  |
| Port                               | G 1/8                |
| Retracting piston force            | 260 N                |
| Retracting piston force            | 58.45 lbf            |

# Guide cylinders, Series GPC-BV

0822063001

AVENTICS  
Series SH

2024-03-18

---

|                                        |                |
|----------------------------------------|----------------|
| Extracting piston force                | 309 N          |
| Extracting piston force                | 69.46 lbf      |
| Max. speed                             | 0.8 m/s        |
| Impact energy                          | 0.35 J         |
| Medium                                 | Compressed air |
| Max. particle size                     | 50 µm          |
| Pressure for determining piston forces | 6,3 bar        |
| Weight                                 | 0.92 kg        |

## Material

|                      |                      |
|----------------------|----------------------|
| Housing material     | Aluminum             |
| Surface housing      | anodized             |
| Seal material        | Polyurethane         |
| Material front plate | Steel, chrome-plated |
| Surface front plate  | galvanized           |
| Material guide rods  | Stainless Steel      |
| Bearing material     | Sintered bronze      |
| Material piston rod  | Stainless Steel      |
| Part No.             | 0822063001           |

## Technical information

Note: Only the Ø10 variants fits to sensor series ST4. The sensor series ST6 and SN3 can be used for all other Ø variants.

The pressure dew point must be at least 15 °C less than ambient and medium temperature and may not exceed 3 °C.

The oil content of compressed air must remain constant during the life cycle.

Use only the approved oils from AVENTICS. Further information can be found in the "Technical information" document (available in <https://www.emerson.com/en-us/support>).

## Dimensions

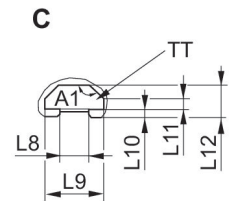
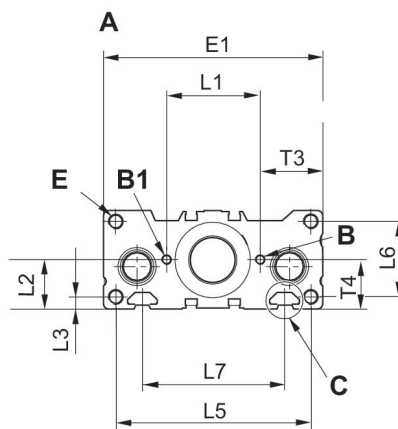
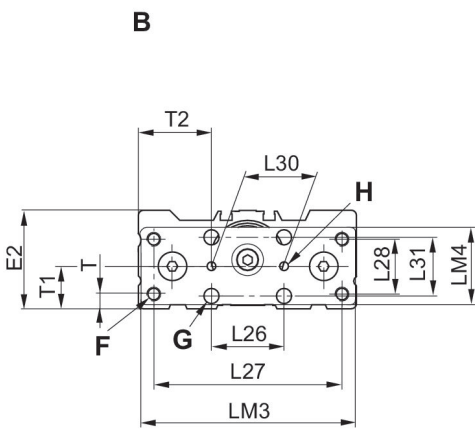
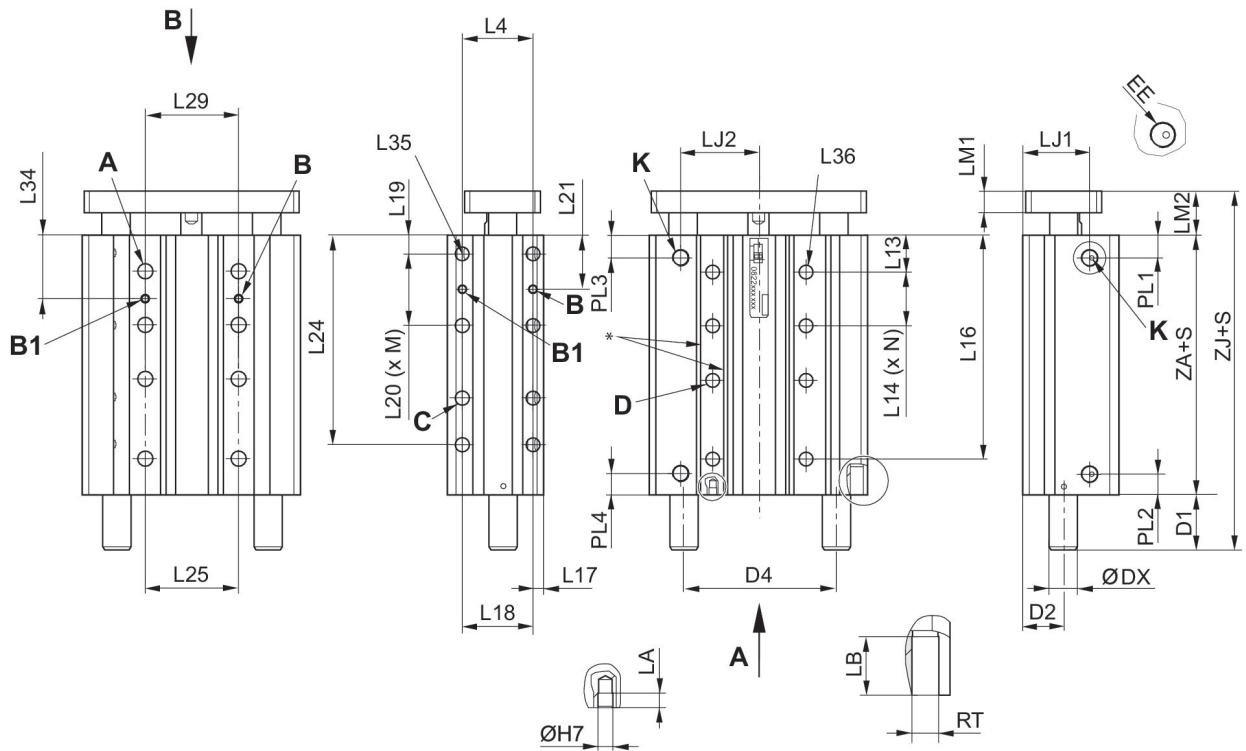
# Guide cylinders, Series GPC-BV

0822063001

AVENTICS  
Series SH

2024-03-18

Ø 25 ... 100



\* Suitable for screws according to ISO 4762

S = stroke

Note: Only the Ø10 variants fits to sensor series ST4. The sensor series ST6 and SN3 can be used for all other Ø variants.

| Piston Ø | A RTxLB | A1   | B ØdxLA | B1 ØdxD | C RTxLB | D Ø 1) | D2   | D4   | DX |
|----------|---------|------|---------|---------|---------|--------|------|------|----|
| 25       | M6x10   | 135° | 4x4     | 4x5     | M6x10   | 5.5    | 18   | 59   | 16 |
| 32       | M8x14   | 135° | 4x4     | 4x5     | M8x14   | 7.4    | 23   | 75.6 | 20 |
| 40       | M8x14   | 135° | 4x4     | 4x5     | M8x14   | 7.4    | 23   | 86   | 20 |
| 50       | M10x20  | 135° | 5x5     | 5x6     | M10x20  | 9.3    | 27.5 | 104  | 25 |
| 63       | M10x20  | 135° | 5x5     | 5x6     | M10x20  | 9.3    | 35   | 124  | 25 |
| 80       | M12x24  | 135° | 6x6     | 6x7     | M12x25  | 11.2   | 39.5 | 152  | 32 |
| 100      | M12x24  | 135° | 6x6     | 6x7     | M12x25  | 11.2   | 39.5 | 174  | 32 |

# Guide cylinders, Series GPC-BV

0822063001

AVENTICS  
Series SH

2024-03-18

| Piston Ø | E RTxLB | E1  | E2   | F Ø 1) | G Ø 2) | H Ø 2) | K EE  | L1        | L2   |
|----------|---------|-----|------|--------|--------|--------|-------|-----------|------|
| 25       | M6x12   | 95  | 43   | M6     | 6.5    | 4H8    | G 1/8 | 35 ±0,1   | 20.5 |
| 32       | M6x12   | 114 | 48.5 | M8     | 6.5    | 4H8    | G 1/8 | 44 ±0,1   | 24   |
| 40       | M8x16   | 124 | 54.5 | M8     | 8.5    | 4H8    | G 1/8 | 53 ±0,15  | 27   |
| 50       | M8x16   | 148 | 64   | M8     | 8.5    | 4H8    | G 1/4 | 66 ±0,15  | 32   |
| 63       | M10x20  | 162 | 78.5 | M10    | 10.5   | 5H8    | G 1/4 | 84 ±0,15  | 39   |
| 80       | M12x25  | 202 | 91.5 | M12    | 10.5   | 5H8    | G 1/4 | 100 ±0,15 | 46   |
| 100      | M12x25  | 226 | 111  | M12    | 12.5   | 6H8    | G 3/8 | 120 ±0,15 | 55.5 |

| Piston Ø | L3  | L4       | L5  | L6   | L7  | L8   | L9   | L10 | L11 |
|----------|-----|----------|-----|------|-----|------|------|-----|-----|
| 25       | 4.5 | 25 ±0,1  | 85  | 34   | 52  | 6.15 | 12   | 1.5 | 1.5 |
| 32       | 5   | 33 ±0,1  | 105 | 26   | 70  | 8.2  | 16.7 | 2.2 | 2.8 |
| 40       | 6   | 40 ±0,15 | 110 | 42   | 80  | 8.2  | 16.7 | 2.2 | 2.8 |
| 50       | 8   | 48 ±0,15 | 133 | 34.5 | 93  | 8.2  | 16.7 | 2.2 | 2.8 |
| 63       | 8   | 60 ±0,15 | 147 | 62   | 112 | 10.2 | 20.3 | 6   | 6   |
| 80       | 9   | 60 ±0,15 | 182 | 54.5 | 132 | 10.2 | 20.3 | 6   | 6   |
| 100      | 9   | 60 ±0,15 | 206 | 76   | 155 | 10.2 | 20.3 | 6   | 6   |

| Piston Ø | L12 | L13  | L15 | L17 | L18 | L19 | L22 | L25 | L26 |
|----------|-----|------|-----|-----|-----|-----|-----|-----|-----|
| 25       | 5.5 | 16.5 | 25  | 5.5 | 25  | 8   | 32  | 32  | 30  |
| 32       | 9   | 20.5 | 33  | 6.5 | 33  | 10  | 42  | 42  | 32  |
| 40       | 9   | 20   | 40  | 6   | 40  | 10  | 53  | 53  | 42  |
| 50       | 9   | 23   | 48  | 7.5 | 48  | 12  | 63  | 63  | 53  |
| 63       | 16  | 24   | 60  | 11  | 60  | 12  | 80  | 80  | 63  |
| 80       | 16  | 33.5 | 60  | 12  | 60  | 13  | 96  | 96  | 80  |
| 100      | 16  | 32.5 | 60  | 12  | 60  | 13  | 119 | 119 | 96  |

| Piston Ø | L27 | L28 | L29       | L30     | L31  | LJ1  | LJ2  | LM1 | LM2  |
|----------|-----|-----|-----------|---------|------|------|------|-----|------|
| 25       | 81  | 23  | 32 ±0,1   | 30 ±0,2 | 24   | 29.6 | 32   | 10  | 15.5 |
| 32       | 97  | 30  | 42 ±0,1   | 32 ±0,2 | 25   | 40   | 40.5 | 12  | 18.5 |
| 40       | 107 | 30  | 53 ±0,15  | 42 ±0,2 | 32.5 | 37.8 | 44   | 12  | 19.5 |
| 50       | 134 | 40  | 63 ±0,15  | 53 ±0,2 | 40   | 54.5 | 50.5 | 15  | 23.5 |
| 63       | 140 | 48  | 80 ±0,15  | 63 ±0,2 | 48   | 57   | 59   | 15  | 24   |
| 80       | 176 | 52  | 96 ±0,15  | 80 ±0,2 | 60   | 77.5 | 74.5 | 20  | 30   |
| 100      | 204 | 64  | 119 ±0,15 | 96 ±0,2 | 60   | 68.5 | 86.5 | 20  | 31   |

| Piston Ø | LM3 | LM4 | PL1  | PL2  | PL3  | PL4  | T    | T1         | T2        |
|----------|-----|-----|------|------|------|------|------|------------|-----------|
| 25       | 93  | 33  | 11   | 11   | 11   | 11   | 6.5  | 18 ±0,4    | 32,5 ±0,4 |
| 32       | 112 | 43  | 13.5 | 13.5 | 13.5 | 13.5 | 8    | 23 ±0,4    | 41 ±0,4   |
| 40       | 122 | 43  | 12   | 12   | 12   | 12   | 8    | 23 ±0,4    | 41 ±0,4   |
| 50       | 146 | 52  | 13   | 13   | 13   | 13   | 7.5  | 27,5 ±0,4  | 47,5 ±0,4 |
| 63       | 160 | 67  | 13.7 | 13.7 | 13.7 | 13.7 | 11   | 35 ±0,4    | 49,5 ±0,5 |
| 80       | 200 | 76  | 23   | 23   | 23   | 23   | 13.5 | 39,5 ±0,45 | 61 ±0,5   |
| 100      | 224 | 84  | 21.5 | 21.5 | 21.5 | 21.5 | 18.5 | 50,5 ±0,45 | 65 ±0,5   |

| Piston Ø | T3       | T4         | TT | ZA    |
|----------|----------|------------|----|-------|
| 25       | 30 ±0,05 | 20,5 ±0,05 | N6 | 42 3) |
| 32       | 35 ±0,05 | 24 ±0,05   | N8 | 46.5  |

# Guide cylinders, Series GPC-BV

0822063001

AVENTICS  
Series SH

2024-03-18

| Piston Ø | T3        | T4        | TT  | ZA |
|----------|-----------|-----------|-----|----|
| 40       | 35,5 ±0,1 | 27 ±0,1   | N8  | 44 |
| 50       | 41 ±0,1   | 32 ±0,1   | N8  | 46 |
| 63       | 39 ±0,1   | 39 ±0,1   | N10 | 51 |
| 80       | 51 ±0,2   | 46 ±0,2   | N10 | 77 |
| 100      | 53 ±0,2   | 55,5 ±0,2 | N10 | 77 |

S = stroke

To determine the cylinder length (ZA) for intermediate strokes (i.e. stroke 10 with dia. 40), the next available standard stroke size must be used

1) Through hole with thread

2) through-hole

3) For stroke 150, ZA = 52, for stroke 25, ZA = 47

Two holes C-C 10 mm.

| Piston Ø | S10 L36 | S20 L36 | S25 L36 | S30 L36 | S40 L36 | S50 L36 | S75 L36 | S100 L36 | S125 L36 |
|----------|---------|---------|---------|---------|---------|---------|---------|----------|----------|
| 25       | 4       | 4       | 4       | 4       | 6       | 6       | 8       | 10       | 10       |
| 32       | 4       | 4       | 4       | 4       | 4       | 6       | 6       | 8        | 10       |
| 40       | 4       | 4       | 4       | 4       | 4       | 4       | 6       | 6        | 8        |
| 50       | 4       | 4       | 4       | 4       | 4       | 4       | 4       | 6        | 8        |
| 63       | 4       | 4       | 4       | 4       | 4       | 4       | 4       | 6        | 6        |
| 80       | 4       | 4       | 4       | 4       | 4       | 4       | 4       | 6        | 6        |
| 100      | 4       | 4       | 4       | 4       | 4       | 4       | 4       | 6        | 6        |

| Piston Ø | S160 L36 | S200 L36 | S10 ZJ | S20 ZJ | S25 ZJ | S30 ZJ | S40 ZJ | S50 ZJ | S75 ZJ |
|----------|----------|----------|--------|--------|--------|--------|--------|--------|--------|
| 25       | 10       | 10       | 57.5   | 57.5   | 57.5   | 57.5   | 57.5   | 57.5   | 68.5   |
| 32       | 10       | 10       | -      | -      | 82     | -      | -      | 82     | 82     |
| 40       | 10       | 10       | -      | -      | 82.6   | -      | -      | 82.6   | 82.6   |
| 50       | 8        | 10       | -      | -      | 94.5   | -      | -      | 94.5   | 94.5   |
| 63       | 8        | 10       | -      | -      | 94.6   | -      | -      | 94.6   | 94.6   |
| 80       | 8        | 8        | -      | -      | 117.5  | -      | -      | 117.5  | 117.5  |
| 100      | 8        | 8        | -      | -      | 117.5  | -      | -      | 117.5  | 117.5  |

| Piston Ø | S100 ZJ | S125 ZJ | S160 ZJ | S200 ZJ |
|----------|---------|---------|---------|---------|
| 25       | 68.5    | 84.5    | 84.5    | 84.5    |
| 32       | 82      | 100     | 100     | 100     |
| 40       | 82.6    | 124.5   | 124.5   | 124.5   |
| 50       | 94.5    | 124.6   | 124.6   | 124.6   |
| 63       | 94.6    | 145.5   | 145.5   | 145.5   |
| 80       | 117.5   | 145.5   | 145.5   | 145.5   |
| 100      | 117.5   | 145.5   | 145.5   | 145.5   |

S = stroke

| Piston Ø | S10 L34 | S20 L34 | S25 L34 | S30 L34 | S40 L34 | S50 L34 | S75 L34 | S100 L34 | S125 L34 |
|----------|---------|---------|---------|---------|---------|---------|---------|----------|----------|
| 25       | 26      | 29      | 29      | 29      | 29      | 29      | 29      | 29       | 29       |
| 32       | 35.5    | 35.5    | 35.5    | 37      | 37      | 37      | 37      | 37       | 37       |
| 40       | 35      | 35      | 35      | 40      | 40      | 40      | 40      | 40       | 40       |
| 50       | 35.5    | 35.5    | 35.5    | 47      | 47      | 47      | 47      | 47       | 47       |
| 63       | 38      | 38      | 38      | 38      | 38      | 38      | 54      | 54       | 54       |

# Guide cylinders, Series GPC-BV

0822063001

AVENTICS  
Series SH

2024-03-18

| Piston Ø | S10 L34 | S20 L34 | S25 L34 | S30 L34 | S40 L34 | S50 L34 | S75 L34 | S100 L34 | S125 L34 |
|----------|---------|---------|---------|---------|---------|---------|---------|----------|----------|
| 80       | 51      | 51      | 51      | 51      | 51      | 63.5    | 63.5    | 63.5     | 63.5     |
| 100      | 51      | 51      | 51      | 51      | 51      | 62.5    | 62.5    | 62.5     | 62.5     |

| Piston Ø | S160 L34 | S200 L34 | S10 L35 | S20 L35 | S25 L35 | S30 L35 | S40 L35 | S50 L35 | S75 L35 |
|----------|----------|----------|---------|---------|---------|---------|---------|---------|---------|
| 25       | 29       | 29       | 4       | 4       | 4       | 4       | 6       | 6       | 8       |
| 32       | 37       | 37       | 4       | 4       | 4       | 4       | 4       | 4       | 6       |
| 40       | 40       | 40       | 4       | 4       | 4       | 4       | 4       | 4       | 6       |
| 50       | 47       | 47       | 4       | 4       | 4       | 4       | 4       | 4       | 4       |
| 63       | 54       | 54       | 4       | 4       | 4       | 4       | 4       | 4       | 4       |
| 80       | 63.5     | 63.5     | 4       | 4       | 4       | 4       | 4       | 4       | 4       |
| 100      | 62.5     | 62.5     | 4       | 4       | 4       | 4       | 4       | 4       | 4       |

| Piston Ø | S100 L35 | S125 L35 | S160 L35 | S200 L35 |
|----------|----------|----------|----------|----------|
| 25       | 8        | 10       | 10       | 10       |
| 32       | 8        | 8        | 10       | 10       |
| 40       | 6        | 6        | 8        | 10       |
| 50       | 6        | 6        | 8        | 8        |
| 63       | 4        | 6        | 6        | 8        |
| 80       | 4        | 6        | 6        | 6        |
| 100      | 4        | 4        | 6        | 6        |

S = stroke

| Piston Ø | S10 M | S20 M | S25 M | S30 M | S40 M | S50 M | S75 M | S100 M | S125 M |
|----------|-------|-------|-------|-------|-------|-------|-------|--------|--------|
| 25       | 1     | 1     | 1     | 1     | 1     | 1     | 2     | 3      | 3      |
| 32       | -     | -     | 1     | 1     | 1     | 1     | 2     | 2      | 3      |
| 40       | -     | -     | 1     | 1     | 1     | 1     | 1     | 2      | 2      |
| 50       | -     | -     | 1     | 1     | 1     | 1     | 1     | 1      | 2      |
| 63       | -     | -     | 1     | 1     | 1     | 1     | 1     | 1      | 1      |
| 80       | -     | -     | 1     | 1     | 1     | 1     | 1     | 1      | 1      |
| 100      | -     | -     | 1     | 1     | 1     | 1     | 1     | 1      | 1      |

| Piston Ø | S160 M | S200 M | S40 L24 | S50 L24 | S75 L24 | S100 L24 | S125 L24 | S160 L24 | S200 L24 |
|----------|--------|--------|---------|---------|---------|----------|----------|----------|----------|
| 25       | 3      | 3      | 60      | 70      | 95      | -        | 145      | 180      | 220      |
| 32       | 3      | 3      | -       | -       | -       | 122.5    | -        | 182.5    | 222.5    |
| 40       | 3      | 3      | -       | -       | 91      | -        | -        | -        | 216      |
| 50       | 2      | 3      | -       | -       | -       | 116      | -        | 176      | -        |
| 63       | 2      | 2      | -       | -       | -       | -        | 142      | -        | 217      |
| 80       | 1      | 2      | -       | -       | -       | -        | 160      | 195      | -        |
| 100      | 1      | 1      | -       | -       | -       | -        | -        | 195      | 235      |

S = stroke

| Piston Ø | S=20 L20 | S=25 L20 | S=30 L20 | S=40 L20 | S=50 L20 | S=75 L20 | S=100 L20 | S=125 L20 | S=160 L20 |
|----------|----------|----------|----------|----------|----------|----------|-----------|-----------|-----------|
| 25       | 22       | 32       | 32       | 32       | 32       | 32       | 32        | 32        | 32        |

# Guide cylinders, Series GPC-BV

0822063001

AVENTICS  
Series SH

2024-03-18

| Piston Ø | S=20 L20 | S=25 L20 | S=30 L20 | S=40 L20 | S=50 L20 | S=75 L20 | S=100 L20 | S=125 L20 | S=160 L20 |
|----------|----------|----------|----------|----------|----------|----------|-----------|-----------|-----------|
| 32       | 35       | 35       | 42       | 42       | 42       | 42       | 42        | 42        | 42        |
| 40       | 30       | 30       | 53       | 53       | 53       | 53       | 53        | 53        | 53        |
| 50       | 30       | 30       | 30       | 30       | 30       | 63       | 63        | 63        | 63        |
| 63       | 30       | 30       | 30       | 30       | 30       | 80       | 80        | 80        | 80        |
| 80       | 47       | 47       | 47       | 47       | 47       | 96       | 96        | 96        | 96        |
| 100      | 49       | 49       | 49       | 49       | 49       | 49       | 119       | 119       | 119       |

| Piston Ø | S=200 L20 | S=20 L21 | S=25 L21 | S=30 L21 | S=40 L21 | S=50 L21 | S=75 L21 | S=100 L21 | S=125 L21 |
|----------|-----------|----------|----------|----------|----------|----------|----------|-----------|-----------|
| 25       | 32        | 19       | 24       | 24       | 24       | 24       | 24       | 24        | 24        |
| 32       | 42        | 27.5     | 27.5     | 31       | 31       | 31       | 31       | 31        | 31        |
| 40       | 53        | 25       | 25       | 36.5     | 36.5     | 36.5     | 36.5     | 36.5      | 36.5      |
| 50       | 63        | 27       | 27       | 27       | 27       | 27       | 43.5     | 43.5      | 43.5      |
| 63       | 80        | 27       | 27       | 27       | 27       | 27       | 52       | 52        | 52        |
| 80       | 96        | 36.5     | 36.5     | 36.5     | 36.5     | 36.5     | 61       | 61        | 61        |
| 100      | 119       | 37.5     | 37.5     | 37.5     | 37.5     | 37.5     | 37.5     | 72.5      | 72.5      |

| Piston Ø | S=160 L21 | S=200 L21 |
|----------|-----------|-----------|
| 25       | 24        | 24        |
| 32       | 31        | 31        |
| 40       | 36.5      | 36.5      |
| 50       | 43.5      | 43.5      |
| 63       | 52        | 52        |
| 80       | 61        | 61        |
| 100      | 72.5      | 72.5      |

S = stroke

| Piston Ø | S=10 N | S=20 N | S=25 N | S=30 N | S=40 N | S=50 N | S=75 N | S=100 N | S=125 N |
|----------|--------|--------|--------|--------|--------|--------|--------|---------|---------|
| 25       | 1      | 1      | 1      | 1      | 1      | 2      | 3      | 3       | 3       |
| 32       | -      | -      | 1      | 1      | 1      | 1      | 2      | 3       | 3       |
| 40       | -      | -      | 1      | 1      | 1      | 1      | 2      | 2       | 3       |
| 50       | -      | -      | 1      | 1      | 1      | 1      | 1      | 2       | 2       |
| 63       | -      | -      | 1      | 1      | 1      | 1      | 1      | 1       | 2       |
| 80       | -      | -      | 1      | 1      | 1      | 1      | 1      | 1       | 2       |
| 100      | -      | -      | 1      | 1      | 1      | 1      | 1      | 1       | 2       |

| Piston Ø | S=160 N | S=200 N | S=40 L16 | S=50 L16 | S=100 L16 | S=125 L16 | S=160 L16 | S=200 L16 |
|----------|---------|---------|----------|----------|-----------|-----------|-----------|-----------|
| 25       | 3       | 3       | 65.5     | -        | 125.5     | 150.5     | 185.5     | 225.5     |
| 32       | 3       | 3       | -        | 76       | -         | 151       | 186       | 226       |
| 40       | 3       | 3       | -        | -        | -         | -         | 184       | 224       |
| 50       | 3       | 3       | -        | -        | -         | 148       | -         | 223       |
| 63       | 2       | 3       | -        | -        | 127       | -         | 187       | -         |
| 80       | 2       | 3       | -        | -        | 143.5     | -         | 203.5     | -         |
| 100      | 2       | 3       | -        | -        | 144.5     | -         | 204.5     | -         |

S = stroke

# Guide cylinders, Series GPC-BV

0822063001

AVENTICS  
Series SH

2024-03-18

| Piston Ø | S=10 D1 | S=20 D1 | S=25 D1 | S=30 D1 | S=40 D1 | S=50 D1 | S=75 D1 | S=100 D1 | S=125 D1 |
|----------|---------|---------|---------|---------|---------|---------|---------|----------|----------|
| 25       | 0       | 0       | 0       | 0       | 0       | 0       | 11      | 11       | 27       |
| 32       | -       | -       | 17      | 17      | 17      | 17      | 17      | 17       | 35       |
| 40       | -       | -       | 19      | 19      | 19      | 19      | 19      | 19       | 37       |
| 50       | -       | -       | 25      | 25      | 25      | 25      | 25      | 25       | 55       |
| 63       | -       | -       | 19      | 19      | 19      | 19      | 19      | 19       | 49       |
| 80       | -       | -       | 10.5    | 10.5    | 10.5    | 10.5    | 10.5    | 10.5     | 38.5     |
| 100      | -       | -       | 9.5     | 9.5     | 9.5     | 9.5     | 9.5     | 9.5      | 37.5     |

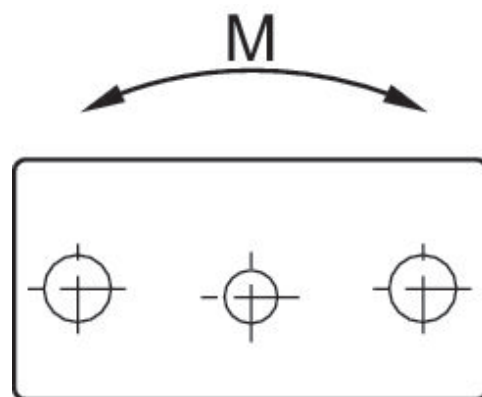
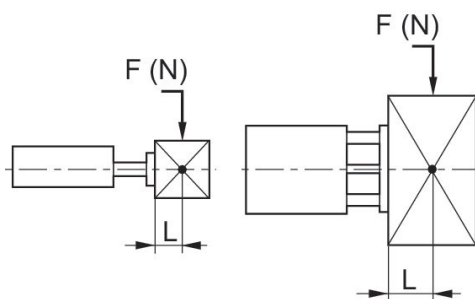
| Piston Ø | S=150 D1 | S=160 D1 | S=200 D1 | S=10 L14 | S=20 L14 | S=25 L14 | S=30 L14 | S=40 L14 | S=50 L14 |
|----------|----------|----------|----------|----------|----------|----------|----------|----------|----------|
| 25       | 27       | 27       | 27       | 19       | 25       | 25       | 25       | 25       | 25       |
| 32       | 35       | 35       | 35       | 30       | 30       | 30       | 33       | 33       | 33       |
| 40       | 37       | 37       | 37       | 30       | 30       | 30       | 40       | 40       | 40       |
| 50       | 55       | 55       | 55       | 25       | 25       | 25       | 48       | 48       | 48       |
| 63       | 49       | 49       | 49       | 28       | 28       | 28       | 28       | 28       | 28       |
| 80       | 38.5     | 38.5     | 38.5     | 35       | 35       | 35       | 60       | 60       | 60       |
| 100      | 37.5     | 37.5     | 37.5     | 37       | 37       | 37       | 60       | 60       | 60       |

| Piston Ø | S=75 L14 | S=100 L14 | S=125 L14 | S=160 L14 | S=200 L14 |
|----------|----------|-----------|-----------|-----------|-----------|
| 25       | 25       | 25        | 25        | 25        | 25        |
| 32       | 33       | 33        | 33        | 33        | 33        |
| 40       | 40       | 40        | 40        | 40        | 40        |
| 50       | 48       | 48        | 48        | 48        | 48        |
| 63       | 60       | 60        | 60        | 60        | 60        |
| 80       | 60       | 60        | 60        | 60        | 60        |
| 100      | 60       | 60        | 60        | 60        | 60        |

S = stroke

Permissible static side load F [N] at distance L

Permissible static moment M [Nm]





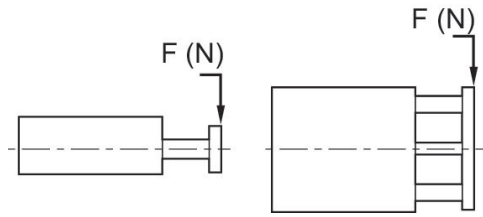
# Guide cylinders, Series GPC-BV

0822063001

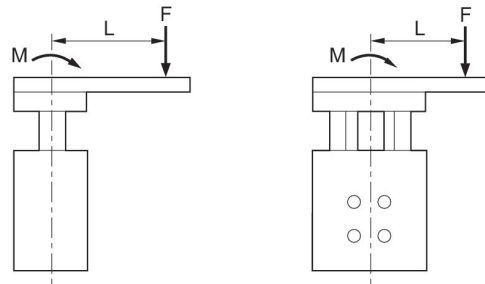
AVENTICS  
Series SH

2024-03-18

Permissible static side force  $F$  [N]

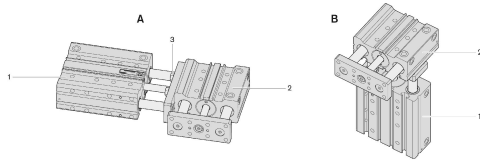


Permissible static moment  $M$  [Nm]



$$M = F \times L$$

## GPC combinations



- 1) Cylinder 1
- 2) Cylinder 2
- 3) Screw

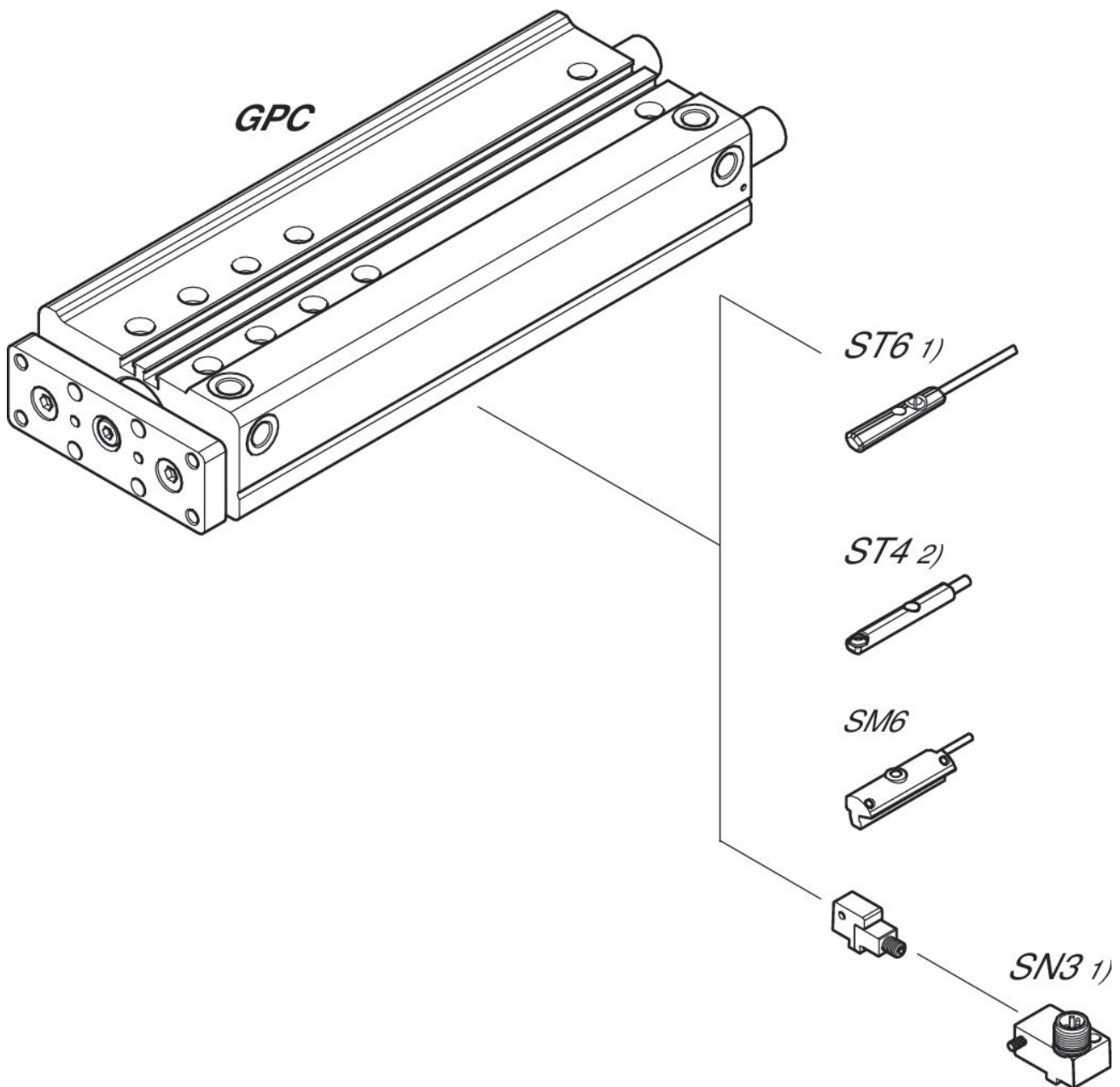
# Guide cylinders, Series GPC-BV

0822063001

AVENTICS  
Series SH

2024-03-18

## Overview drawing



1)  $\leq \text{Ø}12$  mm (GPC-BV, GPC-E, GPC-TL)

2) Only for  $\text{Ø}10$  mm (GPC-BV) and all  $\text{Ø}$  (GPC-ST)

NOTE: This overview drawing is only for orientation to indicate where the various accessory parts can be fastened to the cylinder. The illustration has been simplified for this purpose. It is thus not possible to derive the dimensions from this overview.