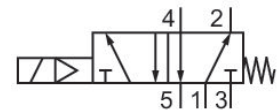
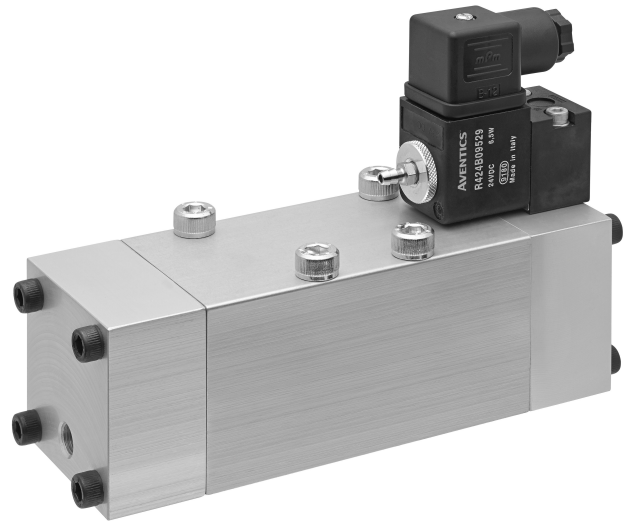


## AVENTICS Series HV30 Directional valves

The AVENTICS Series HV30 complies with the valve standard ISO 5599-1. Due to the level of flow and robustness, especially on high ambient temperatures, HV30 is the perfect valve for Aluminium applications.



### Technical data

Industry	Industrial
Activation	Electrically
Frame size	ISO 3
Valve type	Poppet valve
Switching principle	5/2, with spring return
Sealing principle	Soft seal
Connection type	Plate connection
Manual override	without
Nominal flow Qn	4300 l/min
Min. working pressure	3.5 bar
Max. working pressure	9 bar
Min. control pressure	3.5 bar
Max. control pressure	9 bar
Electrical connection type	Plug
Electrical connection size	EN 175301-803, form A

# 5/2-directional valve, Series HV30

HV30

R424B11848

2024-04-02

---

Protection class with connection	IP65
Operational voltage	230 V AC
Operational voltage AC at 50 Hz	230 V
Voltage tolerance AC 50 Hz	-10% / +10%
Operational voltage AC at 60 Hz	230 V
Voltage tolerance AC 60 Hz	-10% / +10%
Pilot	Internal
Coil width	30 mm
Pilot valve width	30x22 mm CNOMO
Holding power AC 50 Hz	4.2 VA
Holding power AC 60 Hz	4.2 VA
Switch-on power AC 50 Hz	5 VA
Switch-on power AC 60 Hz	5 VA
Duty cycle	100 %
Typ. switch-on time	50 ms
Typ. switch-off time	80 ms
Blocking principle	Single base plate principle
Standards	ISO 5599-1
Min. ambient temperature	10 °C
Max. ambient temperature	120 °C
Min. medium temperature	10 °C
Max. medium temperature	120 °C
Medium	Compressed air
Min. oil content of compressed air	0 mg/m <sup>3</sup>
Max. oil content of compressed air	5 mg/m <sup>3</sup>
Max. particle size	50 µm
Mounting screw tightening torque	11 Nm
Weight	1.73 kg
<b>Material</b>	
Housing material	Aluminum
Seal material	Acrylonitrile butadiene rubber
Part No.	R424B11848

## Technical information

Max. ambient temperature: +180 °C at 1 hour continuous operation and up to +200 °C at 15 hours standby operation

At an ambient temperature of over 120 °C, the duty cycle is reduced by 50%.

Scope of delivery: incl. valve plug connector and pilot valve

Nominal flow  $Q_n$  at 6 bar and  $\Delta p = 1$  bar

The min. control pressure must be adhered to, since otherwise faulty switching and valve failure may result!

The pressure dew point must be at least 15 °C less than ambient and medium temperature and may not exceed 3 °C.

The oil content of compressed air must remain constant during the life cycle.

Use only the approved oils from AVENTICS. Further information can be found in the "Technical information" document (available in <https://www.emerson.com/en-us/support>).

## Dimensions in mm

