

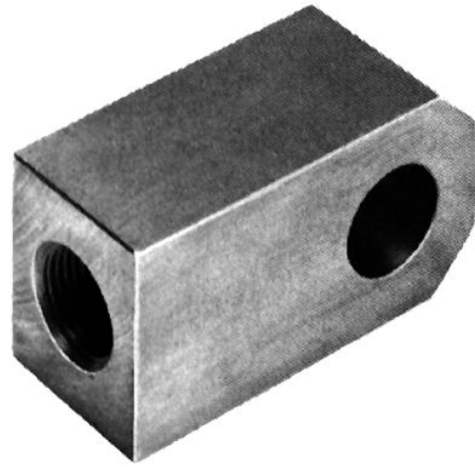
# Female rod eye

R432006533

Ball eye rod  
ends

2023-10-06

## AVENTICS Ball eye rod ends



### Technical data

Industry

Industrial

Weight

0.05 kg

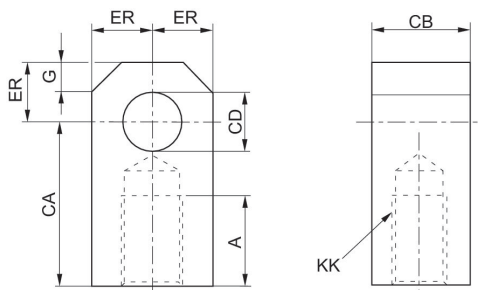
### Material

Housing material

Steel, chrome-plated

Part No.

R432006533



# Female rod eye

R432006533

Ball eye rod  
ends

2023-10-06

---

## Dimensions in inches

Part No.	Ø	A	CA	CB	CD	ER	KK
R432006533	1.50 2.00 2.50	0.88	1.50	0.75	0.50	0.56	1/2-20
R432013437	3.25 4.00	1.13	2.06	1.25	0.75	0.84	7/8-14