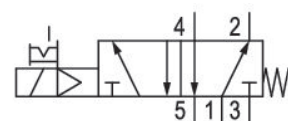


5/2-directional valve, Series L1

L11BA452OG00040

General series information
AVENTICS Series L1 Solenoid Pilot or Air Pilot
Actuated Valves

- The AVENTICS Series L1 spool and sleeve valves offer speed and high flow capacity in a compact design. They are available with solenoid pilot or air pilot actuation. The L1's slim design .875" body width is ideal for inline mounting. The valves provide industry-leading life cycle performance and deliver high reliability in harsh environments. The L1 Series valves are suitable for high cycle machine operations such as automotive, bottling, tire manufacturing, life science, press room and metal stamping applications.



Technical data

Activation	Electrically
Nominal flow Qn	985 l/min
Compressed air connection output	G 1/8
Compressed air connection input	G 1/8
Compressed air connection, exhaust	G 1/8
Working pressure min.	-0.95 bar
Working pressure max	10 bar
Operational voltage AC at 50 Hz	230 V
Voltage tolerance AC 50 Hz	-10% / +10%
Operational voltage AC at 60 Hz	240 V
Voltage tolerance AC 60 Hz	-10% / +10%
Manual override	with detent
Electrical connection type	Plug
Electrical connection size	EN 175301-803, form B (11mm)
Electrical connection number of poles	3-pin

Valve type	Spool valve (Spool & Sleeve)
Actuating control	Single Solenoid
Sealing principle	metal/metal sealing
Pilot	Internal
Connection type	Pipe connection
Control pressure min.	1 bar
Control pressure max.	10 bar
Min. ambient temperature	-23 °C
Max. ambient temperature	46 °C
Min. medium temperature	-23 °C
Max. medium temperature	46 °C
Medium	Compressed air
Max. particle size	40 µm
Oil content of compressed air min.	0 mg/m ³
Oil content of compressed air max.	1 mg/m ³
Standard compressed air connection	according to ISO 228-1
Pilot control exhaust	with directional pilot air exhaust
Max. current consumption	42 mA
Holding power AC 50 Hz	5 VA
Holding power AC 60 Hz	3.5 VA
Duty cycle	100 %
Typ. switch-on time	7 ms
Typ. switch-off time	35 ms
Protection class with connection	IP65
Coil width	22 mm

Material

Housing material	Aluminum
Surface housing	painted
Seal material	caoutchouc/butadiene caoutchouc
Part No.	L11BA452OG00040

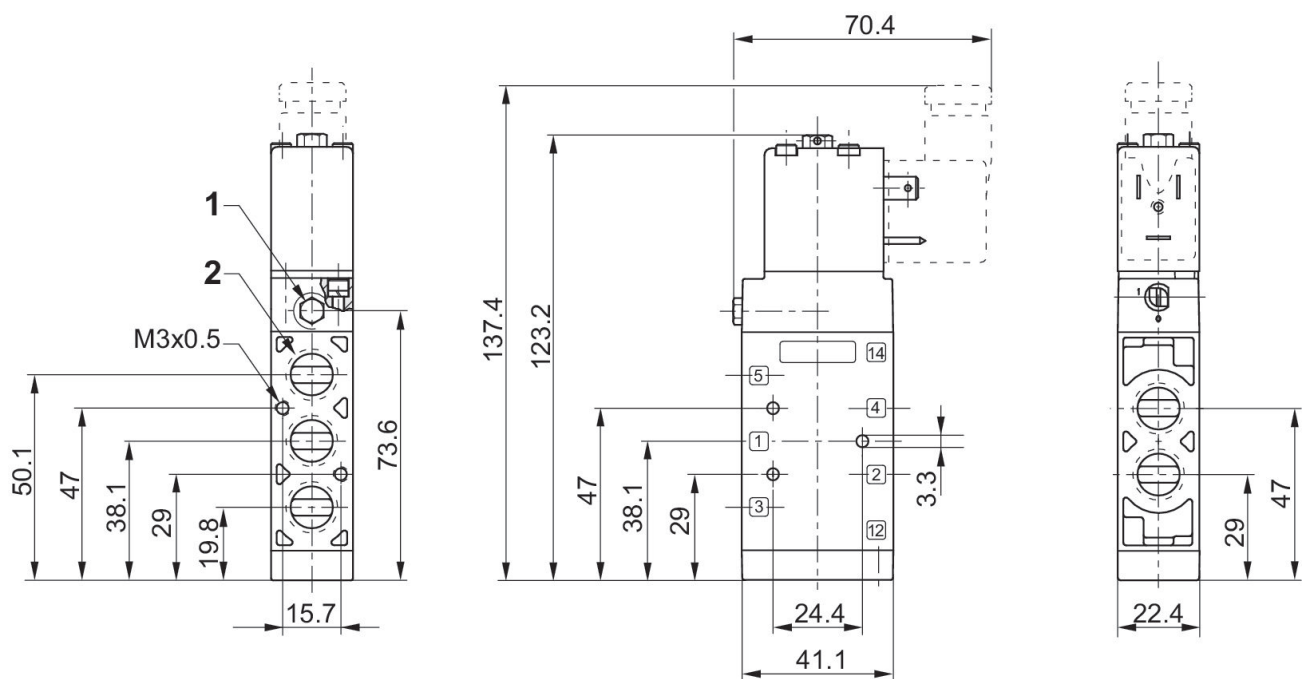
Technical information

The min. control pressure must be adhered to, since otherwise faulty switching and valve failure may result!

The pressure dew point must be at least 15 °C less than ambient and medium temperature and may not exceed 3 °C.

The oil content of compressed air must remain constant during the life cycle.

Dimensions



- 1) External pilot 10-32 UNF or M5x0.8
2) G 1/8 or 1/8 NPTF