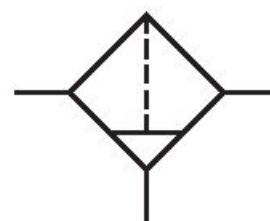


Filter, Series MU1-FLS

R412006562

General series information
Series MU1

- The AVENTICS Series MU1 components are ideal for applications in harsh environments. They offer large thread connections to guarantee a high compressed air flow rate and provide reliable filtration, regulation and lubrication.



Technical data

Industry

Parts

Reservoir

Port

Filter porosity

Nominal flow Qn

Condensate drain

Working pressure min.

Working pressure max

Min. ambient temperature

Max. ambient temperature

Medium

Industrial

Filter

reservoir, polycarbonate, with metal protective guard

G 1

40 µm

4000 l/min

semi-automatic, open without pressure

2 bar

16 bar

-10 °C

60 °C

Compressed air

Neutral gases

Filter reservoir volume	65 cm ³
Filter element	exchangeable
Weight	1.05 kg
Mounting orientation	vertical

Material

Housing material	Die-cast aluminum
Seal material	Acrylonitrile butadiene rubber
Material reservoir	Polycarbonate
Material protective guard	Steel, chrome-plated
Material filter insert	Polyethylene
Part No.	R412006562

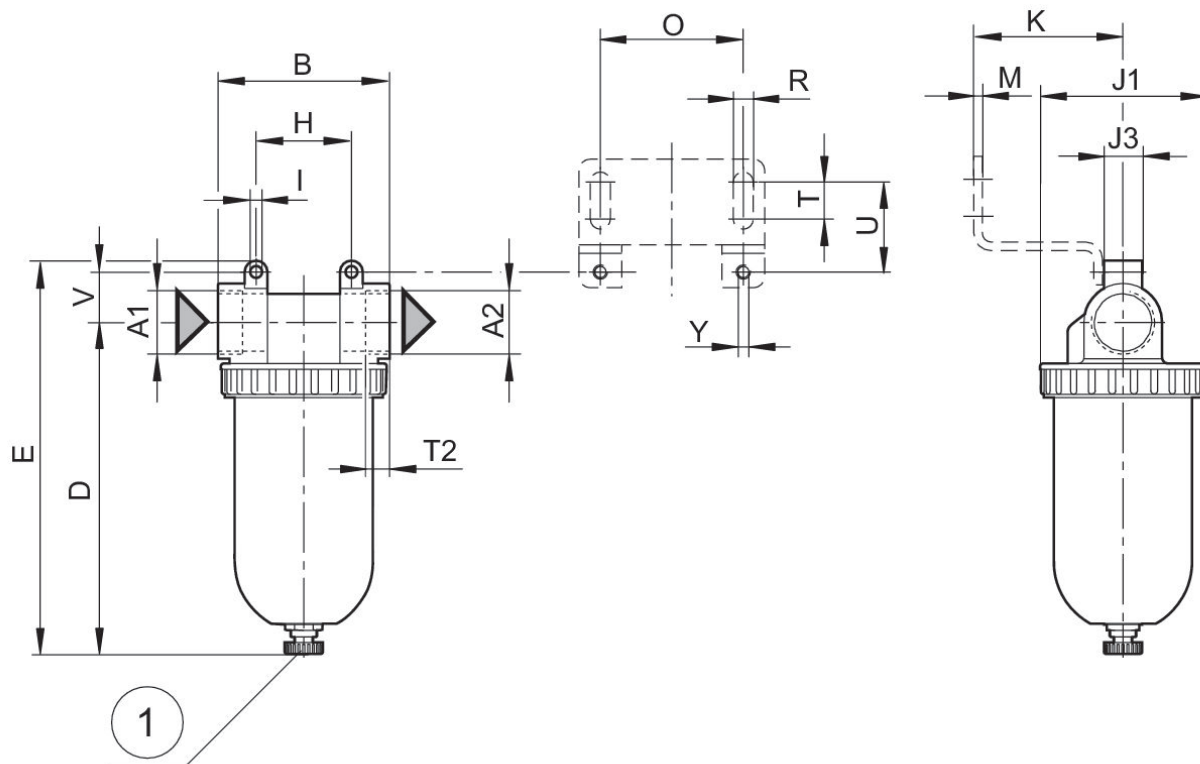
Technical information

The pressure dew point must be at least 15 °C less than ambient and medium temperature and may not exceed 3 °C.

Mounting: mounting bracket R412004874 or installation in piping

Nominal flow Q_n with secondary pressure $p_2 = 6$ bar at $\Delta p = 1$ bar

Dimensions

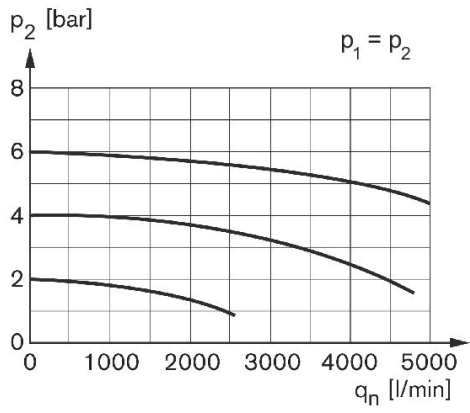


1) manual or semi-automatic condensate drain

Part No.	A1	A2	B	D ±5	E ±7	H	I	J1	J3
R412006562	G 1	G 1	90	174	206	50	6.2	87	20
R412006585	G 1	G 1	90	174	206	50	6.2	87	20

Part No.	K	M	O	R	T	T2	U	V	Y
R412006562	55	3	50	7	13	16	31.5	26.5	M6
R412006585	55	3	50	7	13	16	31.5	26.5	M6

Flow rate characteristic, $p_2 = 0,05 - 7$ bar



p_2 = secondary pressure q_n = nominal flow