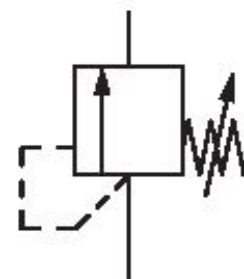


Pressure relief valve, Series MU1

R412007723

General series information
Series MU1

- The AVENTICS Series MU1 components are ideal for applications in harsh environments. They offer large thread connections to guarantee a high compressed air flow rate and provide reliable filtration, regulation and lubrication.



Technical data

Industry

Industrial

Parts

Pressure relief valve

Compressed air connection

G 1/4

Compressed air connection input

G 1/4

Compressed air connection output

G 1/4

Working pressure min.

0 bar

Working pressure max.

10 bar

Regulation range min.

0.4 bar

Regulation range max.

10 bar

Medium

Compressed air

Neutral gases

Max. particle size

5 µm

Nominal flow Qn	300 l/min
Weight	0.12 kg
Housing material	Die cast zinc
Part No.	R412007723

Technical information

The pressure dew point must be at least 15 °C less than ambient and medium temperature and may not exceed 3 °C.

Mounting with mounting bracket 1821331013
panel installation

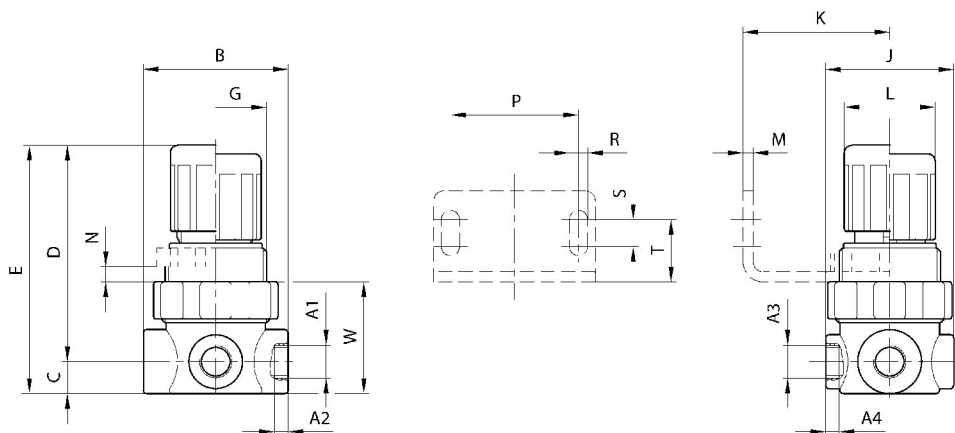
The min. control pressure must be adhered to, since otherwise faulty switching and valve failure may result!

The pressure dew point must be at least 15 °C less than ambient and medium temperature and may not exceed 3 °C.

The oil content of compressed air must remain constant during the life cycle.

Use only the approved oils from AVENTICS. Further information can be found in the “Technical information” document (available in <https://www.emerson.com/en-us/support>).

Dimensions

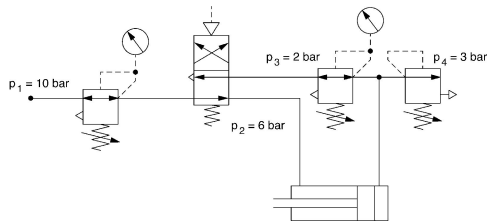


Part No.	A1	A2	A3	A4	B	C	D	E	G
0821302043	G1/8	8	G1/8	8	43	9.5	61	70.5	M30x1.5
0821302044	G1/8	8	G1/8	8	43	9.5	61	70.5	M30x1.5
0821302045	G1/8	8	G1/8	8	43	9.5	61	70.5	M30x1.5
0821302046	G1/4	8	G1/8	8	43	9.5	61	70.5	M30x1.5
0821302031	G1/4	8	G1/8	8	43	9.5	61	70.5	M30x1.5
0821302047	G1/4	8	G1/8	8	43	9.5	61	70.5	M30x1.5
R412007723	G1/4	8	G1/8	8	43	9.5	61	70.5	M30x1.5

Part No.	J	K	L	M	N	P	R	S	T
0821302043	38	40	27	3	5	38	5.4	8	18.5
0821302044	38	40	27	3	5	38	5.4	8	18.5
0821302045	38	40	27	3	5	38	5.4	8	18.5
0821302046	38	40	27	3	5	38	5.4	8	18.5
0821302031	38	40	27	3	5	38	5.4	8	18.5
0821302047	38	40	27	3	5	38	5.4	8	18.5
R412007723	38	40	27	3	5	38	5.4	8	18.5

Part No.	W
0821302043	33
0821302044	33
0821302045	33
0821302046	33
0821302031	33
0821302047	33
R412007723	33

Application example



adjustable opening pressure