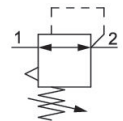


## AVENTICS Series NL1 Air Preparation Units

The AVENTICS Series NL maintenance units are suitable for all areas: as individual components or as assembled maintenance units, for centralized or decentralized compressed air preparation, in compact or powerful versions, for use in high or low temperatures. This line offers a complete, customizable compressed air preparation technology. It includes an option to combine every component in the Series to achieve the desired function, making it possible to adjust the components precisely to the application requirements.



### Technical data

Industry	Industrial
Function	Standard pressure regulator
Parts	Pressure regulator
Pressure gauge	without pressure gauge
Mounting orientation	Any
Regulator type	Diaphragm-type pressure regulator
Port	G 1/4
Nominal flow Qn	1350 l/min
Min. regulation range	0.5 bar
Max. regulation range	10 bar
Min. working pressure	0.5 bar
Max. working pressure	16 bar
Min. ambient temperature	-30 °C
Max. ambient temperature	50 °C
Activation	Mechanical
Regulator function	with relieving air exhaust
Regulator type	Can be assembled into blocks
Pressure supply	single
Medium	Compressed air Neutral gases

# Pressure regulator, Series NL1-RGS

Series NL1

R412007620

2024-04-23

Recommended pre-filtering

5  $\mu\text{m}$

Weight

0.26 kg

## Material

Housing material

Die cast zinc

Seal material

Chloroprene rubber

Part No.

R412007620

## Technical information

The pressure dew point must be at least 15 °C less than ambient and medium temperature and may not exceed 3 °C.

Nominal flow  $Q_n$  with secondary pressure  $p_2 = 6$  bar at  $\Delta p = 1$  bar

The rear pressure gauge connection on the pressure regulator is closed with a blanking plug, the front connection is open. Depending on the customer application, a second blanking plug may be necessary. Please order separately (see accessories).

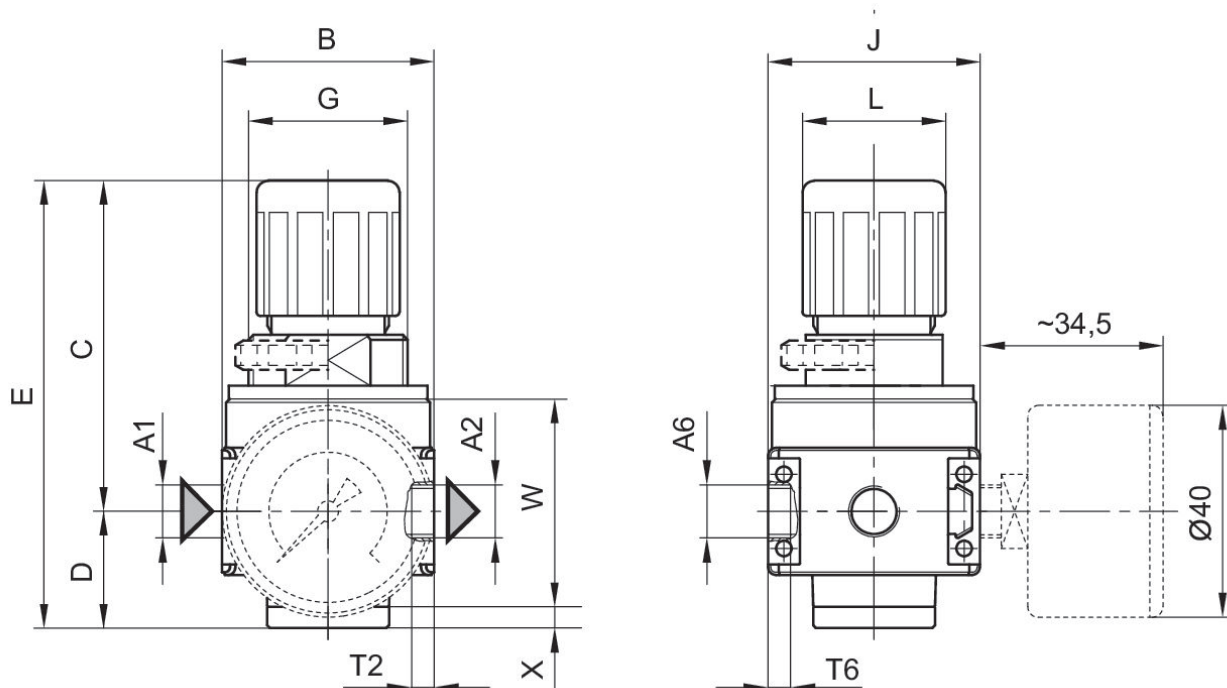
Relieving exhaust ( $\leq 0.3$  bar over set pressure)

With rear exhaust ( $>3$  bar)

lockable regulator head

Order pressure gauge separately

## Dimensions



A1 = input  
A2 = output

# Pressure regulator, Series NL1-RGS

Series NL1

R412007620

2024-04-23

A6 = ventilation port

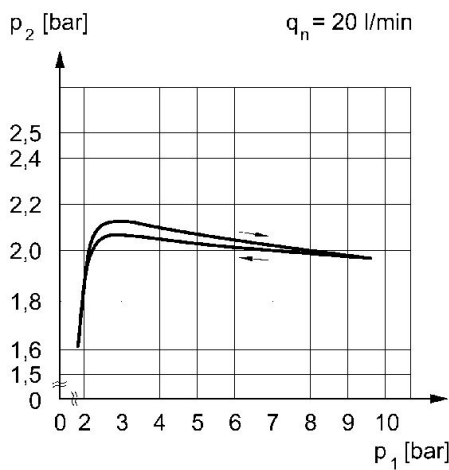
## Dimensions in mm

Part No.	A1	A2	A6	B	C	D	E	G	J
R412007620	G 1/4	G 1/4	G 1/8	40	62.5	22	84.5	M30x1,5	40

Part No.	K	L	M	O	R	T	T2	T6	U
R412007620	43.5	27	3	38	5.4	8	8	6	18.5

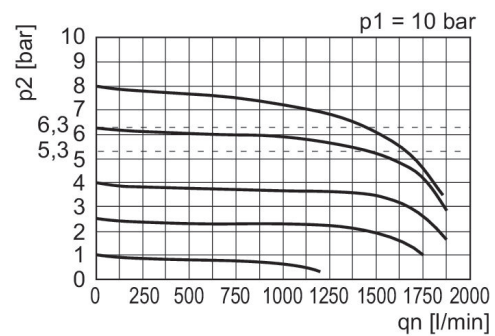
Part No.	W	X
R412007620	39.5	4

## Pressure characteristics curve



p1 = Working pressure  
p2 = Secondary pressure  
qn = Nominal flow

## Flow rate characteristic (setting range p2: 0.5 - 10 bar)



p1 = Working pressure  
p2 = Secondary pressure  
qn = Nominal flow