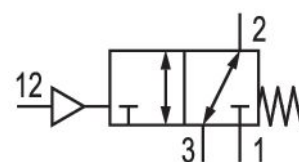


3/2-directional valve, pneumatically operated, Series NL1-SOV

0821300775

General series information Series NL1

- The AVENTICS Series NL maintenance units are suitable for all areas: as individual components or as assembled maintenance units, for centralized or decentralized compressed air preparation, in compact or powerful versions, for use in high or low temperatures. This line offers a complete, customizable compressed air preparation technology. It includes an option to combine every component in the Series to achieve the desired function, making it possible to adjust the components precisely to the application requirements.



Technical data

Industry

Activation

Parts

Nominal flow Qn

Compressed air connection

Working pressure min.

Working pressure max

Connection type

Sealing principle

Type

Can be assembled into blocks

Control pressure min.

Control pressure max.

Industrial

Pneumatically

3/2-directional valve

2200 l/min

G 1/4

0 bar

16 bar

Pipe connection

Soft Seal

Poppet valve

Can be assembled into blocks

2.5 bar

16 bar

Min. ambient temperature	-10 °C
Max. ambient temperature	60 °C
Medium	Compressed air Neutral gases
Max. particle size	5 µm
Compressed air connection, exhaust	G 1/4
Nominal flow Qn 1 to 2	2200 l/min
Nominal flow Qn 2 to 3	800 l/min
Weight	0.4 kg

Material

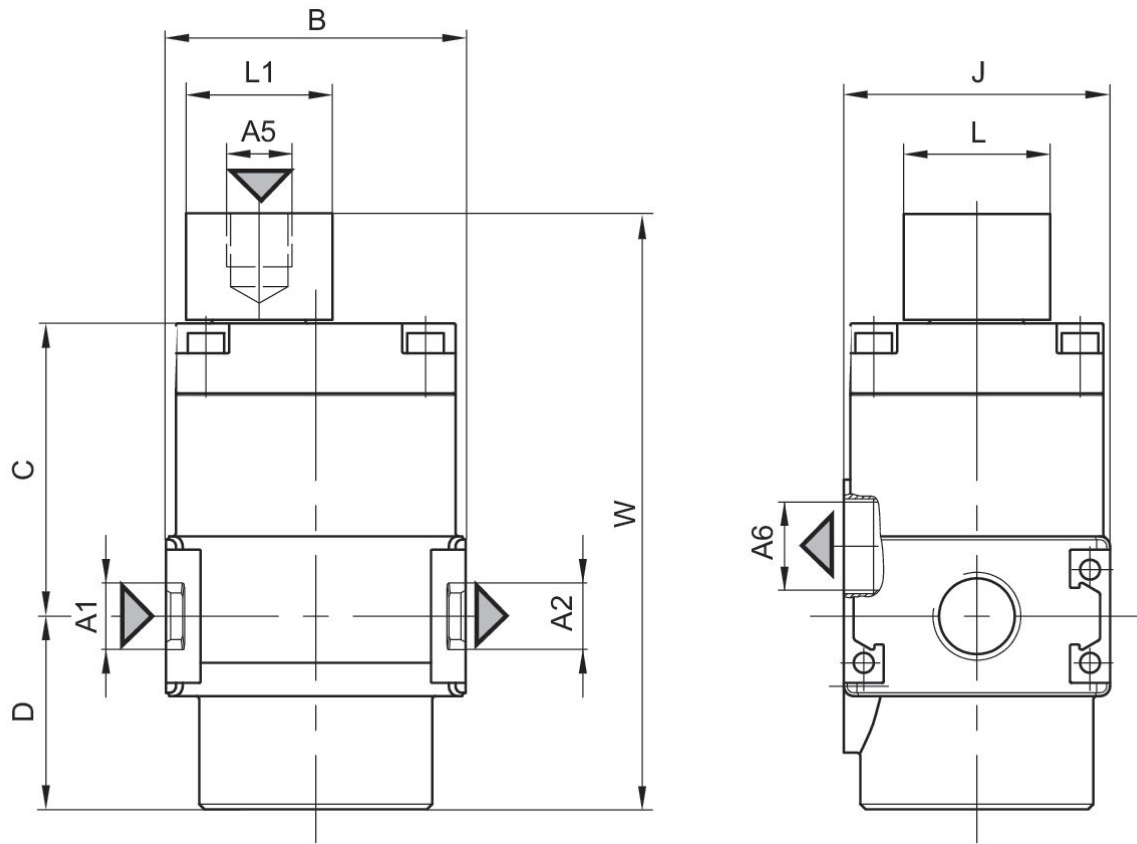
Housing material	Die cast zinc
Seal material	Acrylonitrile butadiene rubber
Part No.	0821300775

Technical information

The pressure dew point must be at least 15 °C under ambient and medium temperature and may not exceed 3 °C .

Nominal flow Qn with secondary pressure $p_2 = 6$ bar at $\Delta p = 1$ bar

Dimensions



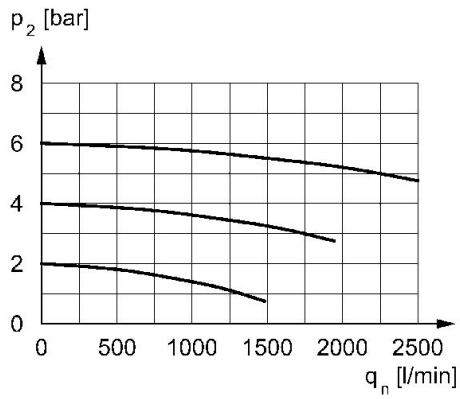
A1 = input A2 = output
A5 = Control pressure connection
A6 = ventilation port

Dimensions in mm

Part No.	A1	A2	A5	A6	B	C	D	J	L
0821300775	G 1/4	G 1/4	G 1/8	G 1/4	45	44.5	29	40	22

Part No.	L1	W
0821300775	22	89.5

Flow rate characteristic, $p_2 = 0,05 - 7$ bar



p_2 = secondary pressure q_n = nominal flow