

3/2-directional valve, electrically operated, Series NL4-SOV

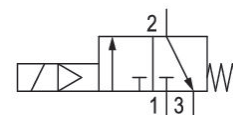
0821300932

Series NL4

2024-05-17

Series NL4

The AVENTICS Series NL maintenance units are suitable for all areas: as individual components or as assembled maintenance units, for centralized or decentralized compressed air preparation, in compact or powerful versions, for use in high or low temperatures. This line offers a complete, customizable compressed air preparation technology. It includes an option to combine every component in the Series to achieve the desired function, making it possible to adjust the components precisely to the application requirements.



Technical data

| | |
|------------------------------------|---------------------------------|
| Industry | Industrial |
| Activation | Electrically |
| Nominal flow Qn | 4000 l/min |
| Compressed air connection | G 1/2 |
| Min. working pressure | 2.5 bar |
| Max. working pressure | 10 bar |
| Operational voltage DC | 24 V |
| Sealing principle | Soft seal |
| Pilot | Internal |
| Connection type | Pipe connection |
| Parts | 3/2-directional valve |
| Can be assembled into blocks | Can be assembled into blocks |
| Type | Poppet valve |
| Min. ambient temperature | -10 °C |
| Max. ambient temperature | 60 °C |
| Medium | Compressed air Neutral gases |
| Max. particle size | 5 µm |
| Compressed air connection, exhaust | G 1/2 |
| Nominal flow Qn 1 to 2 | 4000 l/min |

3/2-directional valve, electrically operated, Series NL4-SOV

Series NL4

2024-05-17

0821300932

| | |
|--------------------------------------|-------------------------------------|
| Nominal flow Qn 2 to 3 | 1600 l/min |
| Power consumption DC | 4.8 W |
| Duty cycle | 100 % |
| Connector standard | ISO 6952 |
| Protection class with connection | IP65 |
| Reverse polarity protection | Protected against polarity reversal |
| Electrical connection type 2 | Plug |
| Electrical connection 2, thread size | ISO 6952, form B |
| Weight | 1.05 kg |

Material

| | |
|----------------------|---------------------------------|
| Housing material | Die cast zinc |
| Seal material | Acrylonitrile butadiene styrene |
| Material front plate | Acrylonitrile butadiene styrene |
| Part No. | 0821300932 |

Technical information

The pressure dew point must be at least 15 °C less than ambient and medium temperature and may not exceed 3 °C.

Nominal flow Qn with secondary pressure p2 = 6 bar at $\Delta p = 1$ bar

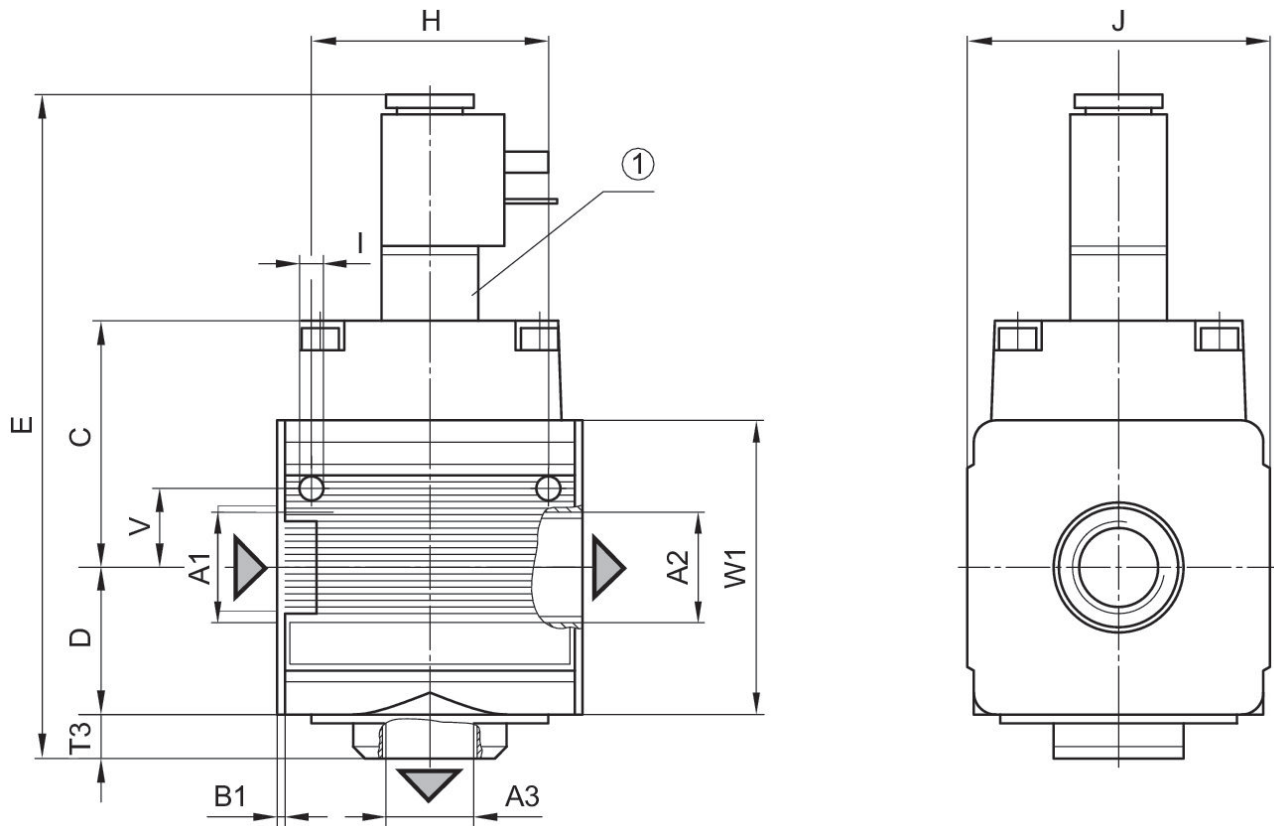
A change in the flow direction (from air supply on the left to air supply on the right) occurs by rotating installation by 180° about the vertical axis. Please see the operating instructions for further details.

3/2-directional valve, electrically operated, Series NL4-SOV

Series NL4

2024-05-17

0821300932
Dimensions



A1 = input A2 = output A3 = ventilation port
1) electrically operated

Dimensions in mm

| Part No. | A1 | A2 | A3 | B1 | C | D | E | H | I |
|------------|-------|-------|-------|-----|------|------|-----|----|-----|
| 0821300932 | G 1/2 | G 1/2 | G 1/2 | 1.8 | 56.5 | 33.5 | 151 | 54 | 5.5 |
| 0821300933 | G 1/2 | G 1/2 | G 1/2 | 1.8 | 56.5 | 33.5 | 151 | 54 | 5.5 |

| Part No. | J | T3 | W1 |
|------------|----|----|----|
| 0821300932 | 69 | 10 | 67 |
| 0821300933 | 69 | 10 | 67 |

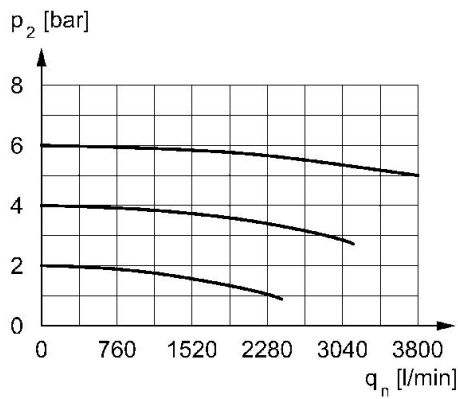
3/2-directional valve, electrically operated, Series NL4-SOV

Series NL4

2024-05-17

0821300932

Flow rate characteristic, $p_2 = 0,05 - 7$
bar



p_2 = Secondary pressure
 q_n = Nominal flow