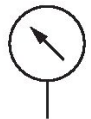


3530040020

## Series PG1 Pressure gauges

With the AVENTICS Series PG1 you can visualize and rely on a clear air pressure display for each of your pneumatic circuits. In addition to the parameters for controlling the air quality, supplying sufficient pressure is the basis for operating a reliable system within machine automation. Emerson offers mechanical pressure gauges that can be integrated into machines for diverse applications and air preparation systems. The specifications of the individual versions in the universal PG1 Series provide a selection of options, such as appearance, material, or the required type of mounting.



## Technical data

Industry	Industrial
Pressure gauge version	Bourdon tube pressure gauge Back port
Corrosion resistance	tropicalized corrosion-protected
Class	1
Compressed air connection	Ø 6x1
Nominal diameter	60 mm
Scale value	0.5
Min. range of application	0 bar
Max. range of application	8 bar
Min. display range	0 bar
Max. display range	10 bar
Min. working pressure	0 bar
Max. working pressure	10 bar
Min. ambient temperature	25 °C
Max. ambient temperature	60 °C
Medium	Compressed air
Background color	White
Main scale unit (outside)	bar

# Pressure gauge, Series PG1-LIG

2024-05-22

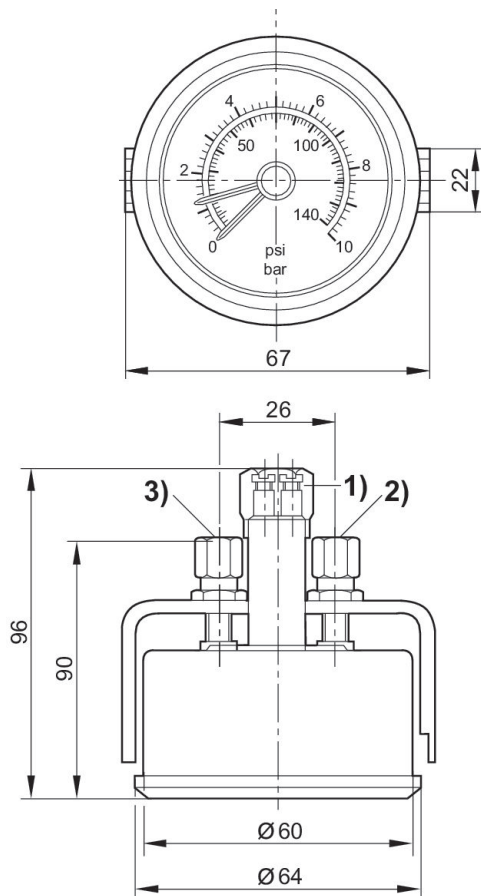
3530040020

Main scale color (outside)	Black
Secondary scale unit (inside)	psi
Secondary scale color (inside)	Black
Pointer color	Black Red

## Material

Housing material	Steel, chrome-plated
Material viewing window	glass
Material thread	Brass
Material front ring	Steel, chrome-plated 3530040020

## Dimensions



- 1) 2-pin lamp terminal 24 V/1.2 W
- 2) pipe connection for red pointer (bottom)
- 3) pipe connection for black pointer (top)