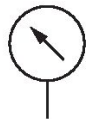


1827231079

## Series PG1 Pressure gauges

With the AVENTICS Series PG1 you can visualize and rely on a clear air pressure display for each of your pneumatic circuits. In addition to the parameters for controlling the air quality, supplying sufficient pressure is the basis for operating a reliable system within machine automation. Emerson offers mechanical pressure gauges that can be integrated into machines for diverse applications and air preparation systems. The specifications of the individual versions in the universal PG1 Series provide a selection of options, such as appearance, material, or the required type of mounting.



## Technical data

Industry	Industrial
Pressure gauge version	Bourdon tube pressure gauge Back port with adjustable work area display
Standardization	EN 837-1
Class	2,5
Compressed air connection	G 1/8
Nominal diameter	50 mm
Scale value	0.5
Min. range of application	0 bar
Max. range of application	8 bar
Min. display range	0 bar
Max. display range	10 bar
Min. working pressure	0 bar
Max. working pressure	10 bar
Min. ambient temperature	-40 °C
Max. ambient temperature	60 °C
Medium	Compressed air
Background color	White
Main scale unit (outside)	bar

# Pressure gauge, Series PG1-SNL-ADJ

2024-05-22

1827231079

---

Main scale color (outside)	Black
Work Area Display, Color	Red Green
Pointer color	Black
Weight	0.09 kg

## Material

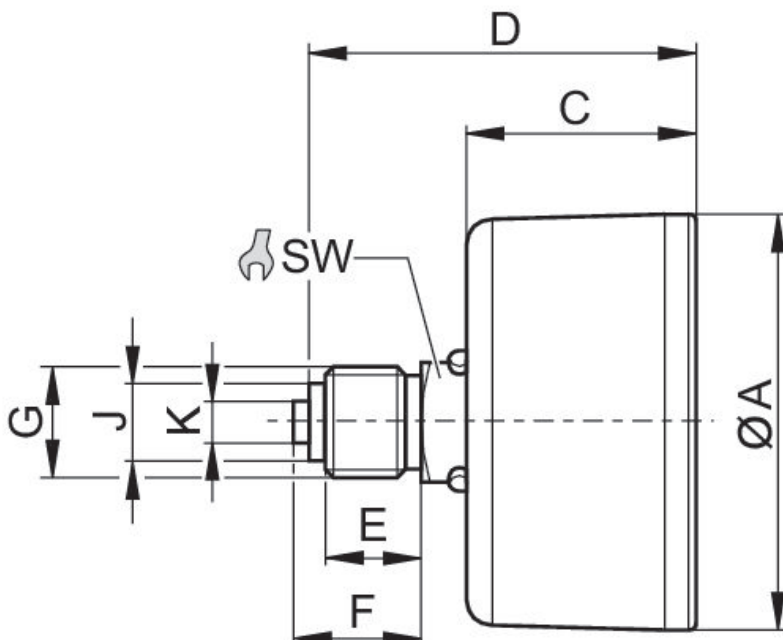
Housing material	Acrylonitrile butadiene styrene
Material viewing window	Polystyrene
Material thread	Brass
	1827231079

## Technical information

To set the operating range, the cover (inspection glass) must be removed. To do this, carefully lift the inspection glass by inserting a pointed or flat object in the slot provided for this purpose on the housing circumference.

Order axial seal separately

## Dimensions



# Pressure gauge, Series PG1-SNL-ADJ

2024-05-22

1827231079

Part No.	Compressed air connection	Nominal diameter	Ø A	C	D	E	F	J	K
1827231075	G 1/8	50 mm	49	26.5	41.5	8	10	8	-
1827231076	G 1/8	50 mm	49	26.5	41.5	8	10	8	-
1827231077	G 1/8	50 mm	49	26.5	41.5	8	10	8	-
1827231078	G 1/8	50 mm	49	26.5	41.5	8	10	8	-
1827231079	G 1/8	50 mm	49	26.5	41.5	8	10	8	-
1827231080	G 1/8	50 mm	49	26.5	41.5	8	10	8	-
R412003474	G 1/4	50 mm	49	26.5	44.5	11	15	9.5	5
R412003475	G 1/4	50 mm	49	26.5	44.5	11	15	9.5	5
R412003476	G 1/4	50 mm	49	26.5	44.5	11	15	9.5	5
R412003477	G 1/4	50 mm	49	26.5	44.5	11	15	9.5	5
R412003478	G 1/4	50 mm	49	26.5	44.5	11	15	9.5	5
R412003479	G 1/4	50 mm	49	26.5	44.5	11	15	9.5	5

Part No.	SW
1827231075	14
1827231076	14
1827231077	14
1827231078	14
1827231079	14
1827231080	14
R412003474	14
R412003475	14
R412003476	14
R412003477	14
R412003478	14
R412003479	14