

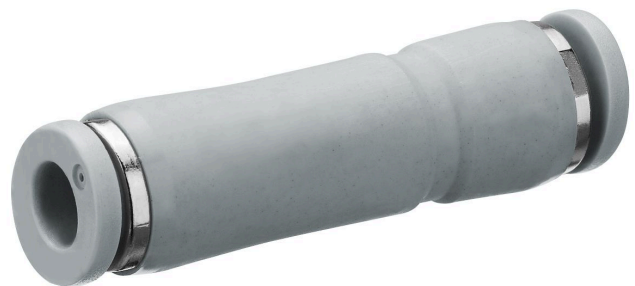
Blocking valve, Series QR1-ASK

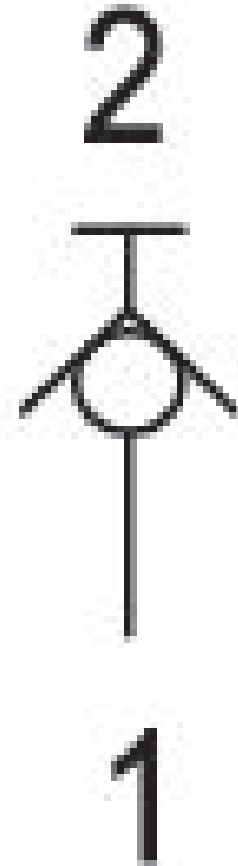
R412005547

General series information

AVENTICS Series QR1 Non-return and check valves

- AVENTICS Series QR1 Non-return and check valve are designed for safety-relevant processes, the valves enable automatic blocking of the air supply to immediately stop the working stroke.





Technical data

Industry	Industrial
Compressed air connection 1	Ø 4
Compressed air connection type 1	push-in fitting
Compressed air connection type 2	push-in fitting
Type	Poppet valve
Compressed air connection 2	Ø 4
Nominal flow Qn 1 to 2	300 l/min
Working pressure min.	0 bar
Working pressure max	10 bar
Min. ambient temperature	0 °C
Max. ambient temperature	60 °C
Min. medium temperature	0 °C
Max. medium temperature	60 °C
Medium	Compressed air
Delivery unit	10 piece
Weight	0.007 kg

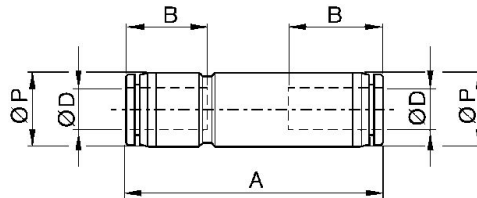
Material

Housing material	Polybutyleneterephthalate
Seal material	Acrylonitrile butadiene rubber
Material release ring	Polyoxymethylene
Part No.	R412005547

Technical information

When connecting/disconnecting the compressed air tubing and shut-off valve, the flow is released/blocked.

Dimensions



Part No.	Ø D	Ø D	A	B	Ø P
R412005547	Ø 4	Ø 4	42.9	16	10
R412005548	Ø 6	Ø 6	46.9	17	12.4
R412005549	Ø 8	Ø 8	52.6	18.5	14.4
R412005550	Ø 10	Ø 10	59.2	21	17.6