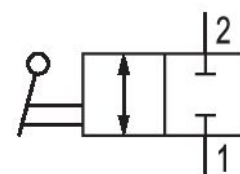
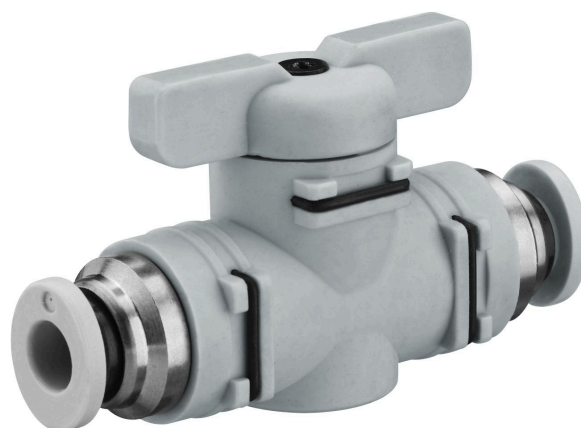


# Ball valve, Series QR1-BSK

## R412005503

General series information  
AVENTICS Series QR1 Shut-off valves

- AVENTICS Series QR1 Shut-off valve are designed for safety-relevant processes, the valves enable manual blocking of the air supply to immediately stop the working stroke.



### Technical data

Industry	Industrial
Type	Ball Valve
Medium	Compressed air
Compressed air connection 1	Ø 8
Compressed air connection type 1	push-in fitting
Compressed air connection 2	Ø 8
Compressed air connection type 2	push-in fitting
Min. ambient temperature	-20 °C
Max. ambient temperature	80 °C
Min. medium temperature	-20 °C
Max. medium temperature	80 °C
Working pressure min.	-0.95 bar
Working pressure max	16 bar
Flow Qn	1550 l/min
Delivery unit	5 piece

Weight 0.021 kg

### Material

Housing material	polyphenylene sulfide
Seal material	Acrylonitrile butadiene rubber
Material release ring	Polyamide
Material hand lever	polyphenylene sulfide
Part No.	R412005503

### Dimensions in mm

