

# Ball valve, Series QR1-BSK

R412005504

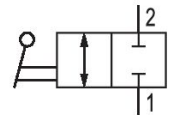
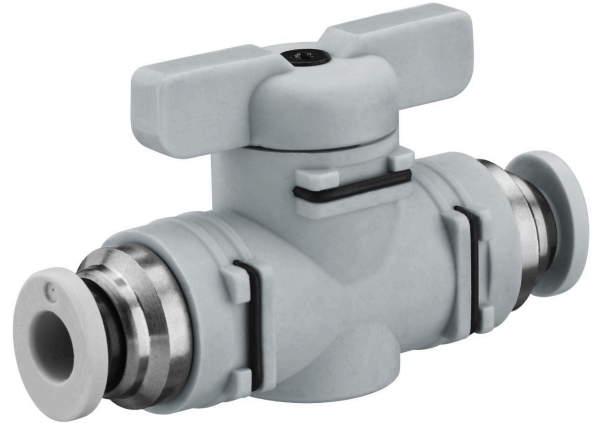
Series QR1

2025-01-07

- $Q_n = 500 \dots 2600$  l/min

## AVENTICS Series QR1 Shut-off valves

AVENTICS Series QR1 Shut-off valve are designed for safety-relevant processes, the valves enable manual blocking of the air supply to immediately stop the working stroke.



## Technical data

Industry	Industrial
Type	Ball Valve
Medium	Compressed air
Compressed air connection 1	Ø 10
Compressed air connection type 1	push-in fitting
Compressed air connection 2	Ø 10
Compressed air connection type 2	push-in fitting
Min. ambient temperature	-20 °C
Max. ambient temperature	80 °C
Min. medium temperature	-20 °C
Max. medium temperature	80 °C
Min. working pressure	-1 bar
Max. working pressure	16 bar
Flow $Q_n$	2500 l/min
Delivery unit	5 piece
Weight	0.048 kg

## Material

Housing material	Polyphenylene sulfide
------------------	-----------------------

# Ball valve, Series QR1-BSK

R412005504

Series QR1

2025-01-07

Seal material	Acrylonitrile butadiene rubber
Material release ring	Polyamide
Material hand lever	Polyphenylene sulfide
Part No.	R412005504

## Dimensions in mm

