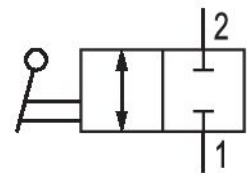
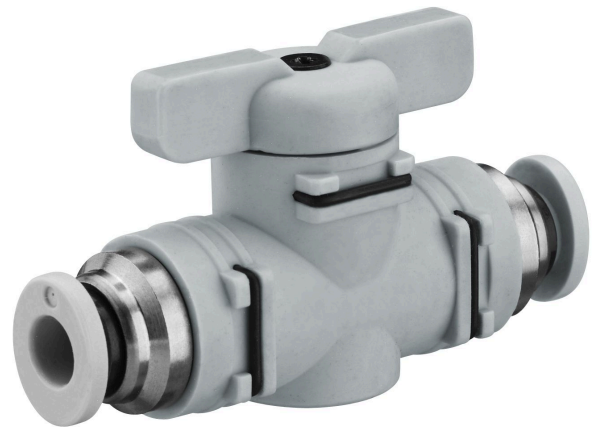


Ball valve, Series QR1-BSK

R412005505

General series information
AVENTICS Series QR1 Shut-off valves

- AVENTICS Series QR1 Shut-off valve are designed for safety-relevant processes, the valves enable manual blocking of the air supply to immediately stop the working stroke.



Technical data

Industry

Industrial

Type

Ball Valve

Medium

Compressed air

Compressed air connection 1

Ø 12

Compressed air connection type 1

push-in fitting

Compressed air connection 2

Ø 12

Compressed air connection type 2

push-in fitting

Note

Due to product optimisation, the delivered article may currently deviate from the dimensions shown.

Min. ambient temperature

0 °C

Max. ambient temperature

60 °C

Min. medium temperature

0 °C

Max. medium temperature

60 °C

Working pressure min.

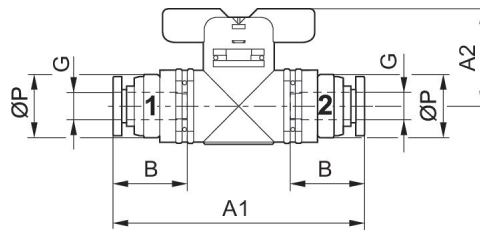
-0.95 bar

Working pressure max 10 bar
Flow Qn 2600 l/min
Delivery unit 5 piece
Weight 0.98 kg

Material

Housing material Polybutyleneterephthalate
Seal material Acrylonitrile butadiene rubber
Material hand lever Polybutyleneterephthalate
Part No. R412005505

Dimensions



Part No.	Port G	A1	A2	B	Ø P
R412005502	Ø 12	59.4	23	17	17
R412005503	Ø 12	59.2	23	18.5	17
R412005504	Ø 12	78.3	28	21	24