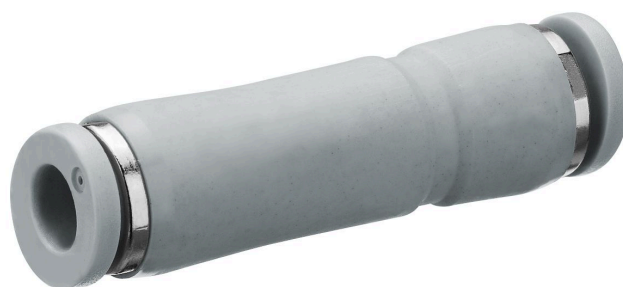


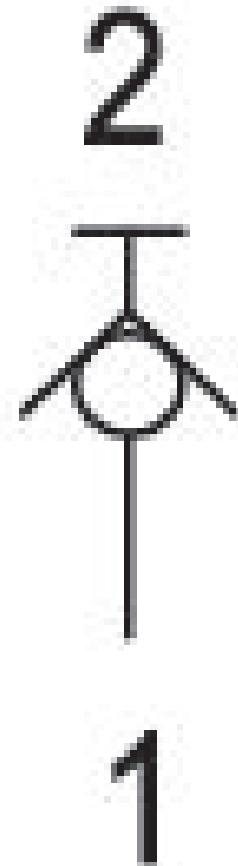
# Blocking valve, Series QR1-ASK

R432000459

Series QR1

- $Q_n = 280 \dots 2000 \text{ l/min}$





## Technical data

Industry	Industrial
Compressed air connection 1	Ø 3/8
Compressed air connection type 1	push-in fitting
Compressed air connection type 2	push-in fitting
Type	Poppet valve
Compressed air connection 2	Ø 3/8
Nominal flow Qn 1 to 2	300 l/min
Working pressure min.	0 bar
Working pressure max	10 bar
Min. ambient temperature	0 °C
Max. ambient temperature	60 °C
Min. medium temperature	32 °C
Max. medium temperature	60 °C
Medium	Compressed air
Delivery unit	10 piece
Weight	0.0272 kg

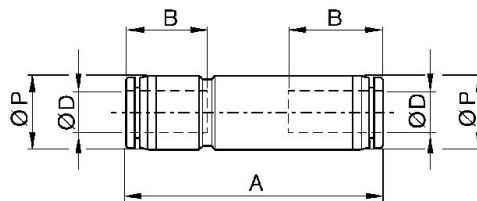
## Material

Housing material	Polybutyleneterephthalate
Seal material	Acrylonitrile butadiene rubber
Part No.	R432000459

## Technical information

When connecting/disconnecting the compressed air tubing and shut-off valve, the flow is released/ blocked.

### Dimensions in inches



Part No.	Ø D	Ø D	A	B	Ø P
R432000461	Ø5/32	Ø5/32	1.69	0.63	0.394
R432000458	Ø1/4	Ø1/4	1.86	0.67	0.489
R432000460	Ø5/16	Ø5/16	2.072	0.729	0.567
R432000459	Ø 3/8	Ø 3/8	2.38	0.827	0.693
R432000457	Ø1/2	Ø1/2	2.774	0.887	0.835