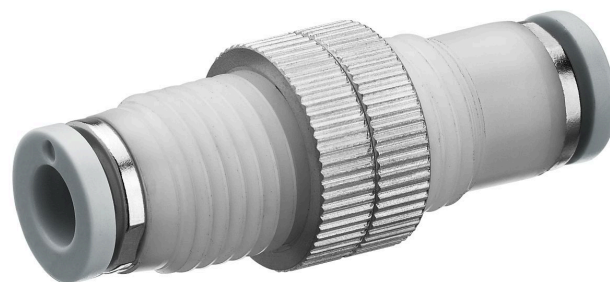


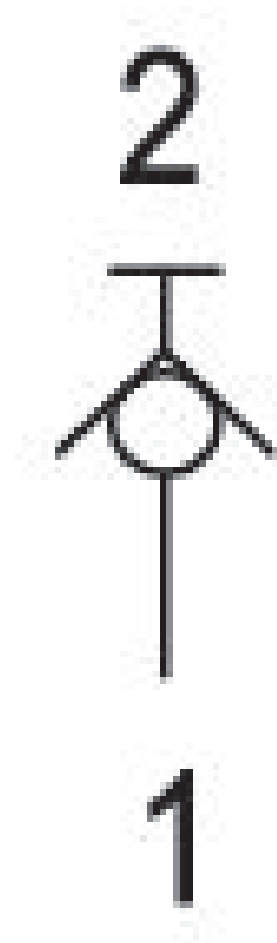
# Blocking valve, Series QR1-ASS

R432000462

Series QR1

■  $Q_n = 280 \dots 2000 \text{ l/min}$





## Technical data

Industry	Industrial
Compressed air connection 1	Ø1/2
Compressed air connection type 1	push-in fitting
Compressed air connection type 2	push-in fitting
Type	Poppet valve
Compressed air connection 2	Ø1/2
Nominal flow Qn 1 to 2	300 l/min
Working pressure min.	0 bar
Working pressure max	10 bar
Min. ambient temperature	0 °C
Max. ambient temperature	60 °C
Min. medium temperature	0 °C
Max. medium temperature	60 °C
Medium	Compressed air
Delivery unit	5 piece
Weight	0.0362 kg

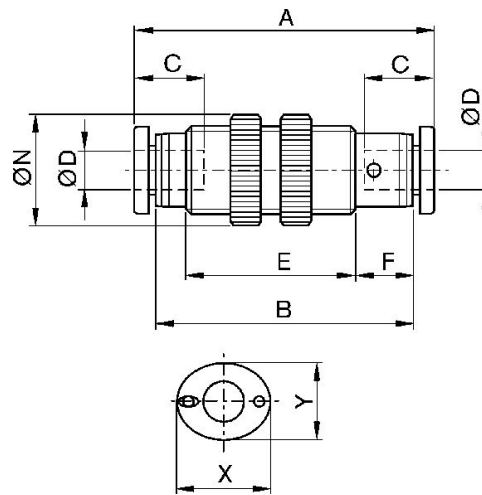
## Material

Housing material	Polybutyleneterephthalate
Seal material	Acrylonitrile butadiene rubber
Part No.	R432000462

## Technical information

When connecting/disconnecting the compressed air tubing and shut-off valve, the flow is released/ blocked.

### Dimensions in inches



Part No.	Ø D	A	B	C	E	F	Ø N	X	Y
R432000466	Ø5/32	1.474	37.4	0.63	-	0.37	0.67	0.473	0.394
R432000463	Ø1/4	1.635	41.5	0.67	-	0.39	0.801	0.552	0.473
R432000465	Ø5/16	1.86	47.2	0.729	-	0.418	0.906	0.63	0.552
R432000464	Ø 3/8	2.124	52.9	0.827	-	0.445	1.143	0.749	0.67
R432000462	Ø1/2	2.494	63.3	0.887	-	0.414	1.261	0.906	0.827