

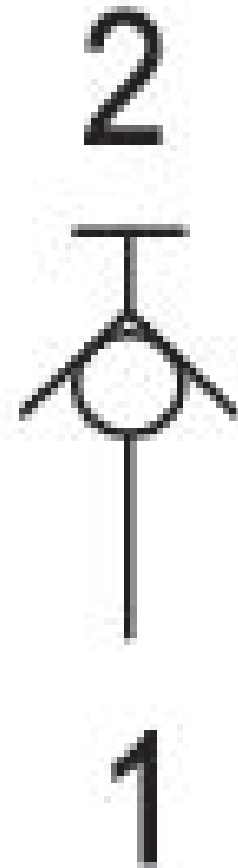
Blocking valve, Series QR1-ASS

R432000465

Series QR1

■ $Q_n = 280 \dots 2000 \text{ l/min}$





Technical data

| | |
|----------------------------------|-----------------|
| Industry | Industrial |
| Compressed air connection 1 | Ø5/16 |
| Compressed air connection type 1 | push-in fitting |
| Compressed air connection type 2 | push-in fitting |
| Type | Poppet valve |
| Compressed air connection 2 | Ø5/16 |
| Nominal flow Qn 1 to 2 | 300 l/min |
| Working pressure min. | 0 bar |
| Working pressure max | 10 bar |
| Min. ambient temperature | 0 °C |
| Max. ambient temperature | 60 °C |
| Min. medium temperature | 0 °C |
| Max. medium temperature | 60 °C |
| Medium | Compressed air |
| Delivery unit | 5 piece |
| Weight | 0.0181 kg |

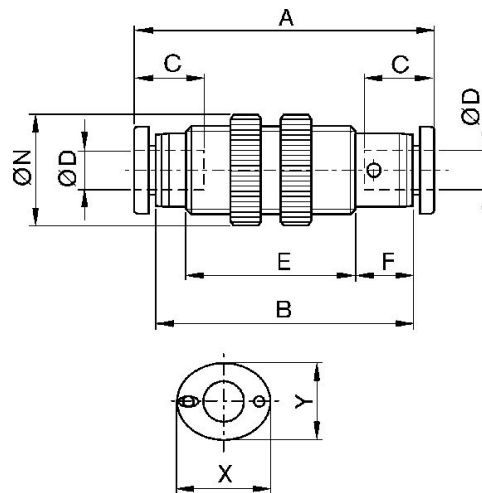
Material

| | |
|------------------|--------------------------------|
| Housing material | Polybutyleneterephthalate |
| Seal material | Acrylonitrile butadiene rubber |
| Part No. | R432000465 |

Technical information

When connecting/disconnecting the compressed air tubing and shut-off valve, the flow is released/ blocked.

Dimensions in inches



| Part No. | Ø D | A | B | C | E | F | Ø N | X | Y |
|------------|-------|-------|------|-------|---|-------|-------|-------|-------|
| R432000466 | Ø5/32 | 1.474 | 37.4 | 0.63 | - | 0.37 | 0.67 | 0.473 | 0.394 |
| R432000463 | Ø1/4 | 1.635 | 41.5 | 0.67 | - | 0.39 | 0.801 | 0.552 | 0.473 |
| R432000465 | Ø5/16 | 1.86 | 47.2 | 0.729 | - | 0.418 | 0.906 | 0.63 | 0.552 |
| R432000464 | Ø 3/8 | 2.124 | 52.9 | 0.827 | - | 0.445 | 1.143 | 0.749 | 0.67 |
| R432000462 | Ø1/2 | 2.494 | 63.3 | 0.887 | - | 0.414 | 1.261 | 0.906 | 0.827 |