

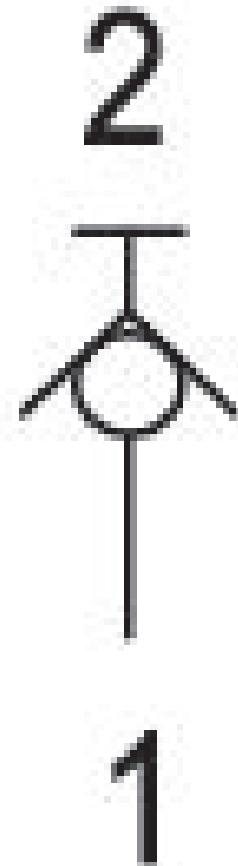
# Blocking valve, Series QR1-ASS

R432000466

Series QR1

■  $Q_n = 280 \dots 2000 \text{ l/min}$





## Technical data

|                                  |                 |
|----------------------------------|-----------------|
| Industry                         | Industrial      |
| Compressed air connection 1      | Ø5/32           |
| Compressed air connection type 1 | push-in fitting |
| Compressed air connection type 2 | push-in fitting |
| Type                             | Poppet valve    |
| Compressed air connection 2      | Ø5/32           |
| Nominal flow Qn 1 to 2           | 300 l/min       |
| Working pressure min.            | 0 bar           |
| Working pressure max             | 10 bar          |
| Min. ambient temperature         | 0 °C            |
| Max. ambient temperature         | 60 °C           |
| Min. medium temperature          | 0 °C            |
| Max. medium temperature          | 60 °C           |
| Medium                           | Compressed air  |
| Delivery unit                    | 5 piece         |
| Weight                           | 0.009 kg        |

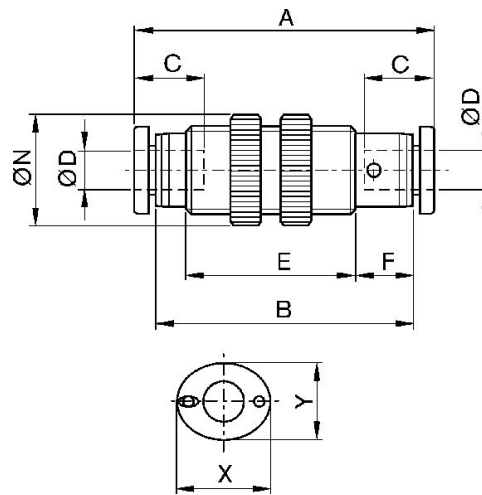
## Material

|                  |                                |
|------------------|--------------------------------|
| Housing material | Polybutyleneterephthalate      |
| Seal material    | Acrylonitrile butadiene rubber |
| Part No.         | R432000466                     |

## Technical information

When connecting/disconnecting the compressed air tubing and shut-off valve, the flow is released/ blocked.

### Dimensions in inches



| Part No.   | Ø D   | A     | B    | C     | E | F     | Ø N   | X     | Y     |
|------------|-------|-------|------|-------|---|-------|-------|-------|-------|
| R432000466 | Ø5/32 | 1.474 | 37.4 | 0.63  | - | 0.37  | 0.67  | 0.473 | 0.394 |
| R432000463 | Ø1/4  | 1.635 | 41.5 | 0.67  | - | 0.39  | 0.801 | 0.552 | 0.473 |
| R432000465 | Ø5/16 | 1.86  | 47.2 | 0.729 | - | 0.418 | 0.906 | 0.63  | 0.552 |
| R432000464 | Ø 3/8 | 2.124 | 52.9 | 0.827 | - | 0.445 | 1.143 | 0.749 | 0.67  |
| R432000462 | Ø1/2  | 2.494 | 63.3 | 0.887 | - | 0.414 | 1.261 | 0.906 | 0.827 |