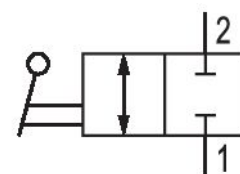
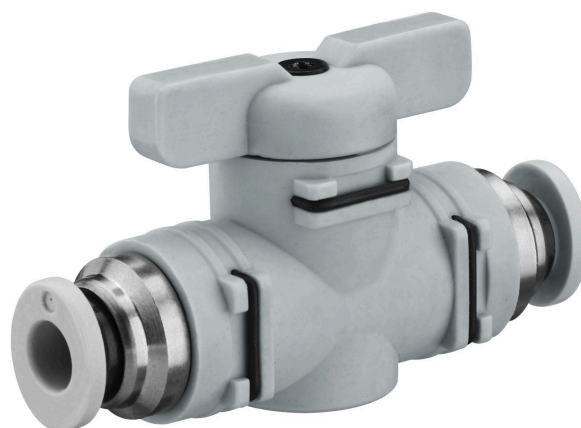


# Ball valve, Series QR1-BSK

## R432000408

General series information  
AVENTICS Series QR1 Shut-off valves

- AVENTICS Series QR1 Shut-off valve are designed for safety-relevant processes, the valves enable manual blocking of the air supply to immediately stop the working stroke.



### Technical data

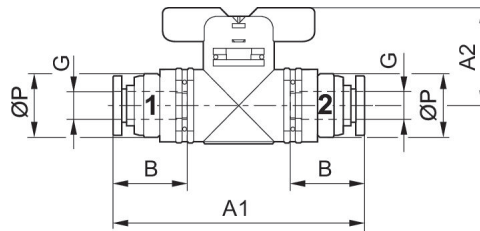
Industry	Industrial
Type	Ball Valve
Medium	Compressed air
Compressed air connection 1	Ø5/16
Compressed air connection type 1	push-in fitting
Compressed air connection 2	Ø5/16
Compressed air connection type 2	push-in fitting
Min. ambient temperature	0 °C
Max. ambient temperature	60 °C
Min. medium temperature	0 °C
Max. medium temperature	60 °C
Working pressure min.	-0.95 bar
Working pressure max	10 bar
Flow Qn	1000 l/min
Delivery unit	5 piece

Weight 0.0453 kg

### Material

Housing material Polybutyleneterephthalate  
 Seal material Acrylonitrile butadiene rubber  
 Material hand lever Polybutyleneterephthalate  
 Part No. R432000408

### Dimensions in inches



### Dimensions in inches

Part No.	Port G	A1	A2	B	Ø P
R432000406	Ø1/4	2.34	0.906	0.67	0.67
R432000408	Ø5/16	2.332	0.906	0.729	0.67
R432000407	Ø 3/8	3.089	1.103	0.827	0.945
R432000405	Ø1/2	3.124	1.103	0.827	0.945