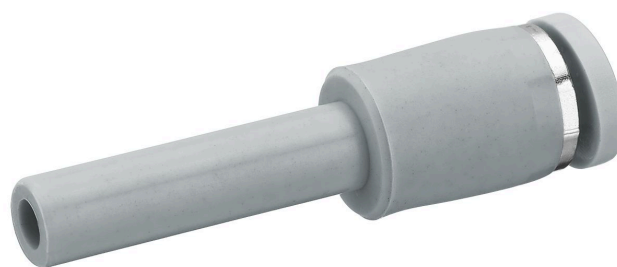


QR1-S-RED standard series

2121708040

General series information
AVENTICS Series QR1 Fittings

- AVENTICS Series QR1 push-in connectors with easy, secure mounting are available in many versions: for tubing diameters from 3 to 16 mm, as well as in plastic, metal, and stainless steel variants. QR1 Series offers a cylindric thread that allows repeated connection and release without problems (Quick Release) and captive O-ring guarantees an optimal sealing. Our QR program offers the right solution for every application and industry.



Technical data

| | |
|----------------------------------|--|
| Industry | Industrial |
| Fitting type | Straight push-in fitting, reducing push-in fitting |
| Compressed air connection type | Ø 4 |
| Port G | pin bushing |
| Compressed air connection type 2 | Ø 8 |
| Port D | Archive product: Do not use in new constructions! |
| Note | QR1-S-RED |
| Type | -0.95 bar |
| Working pressure min. | 10 bar |
| Working pressure max | 0 °C |
| Min. ambient temperature | 60 °C |
| Max. ambient temperature | 10 piece |
| Delivery unit | 0.0038 kg |
| Weight | |

Material

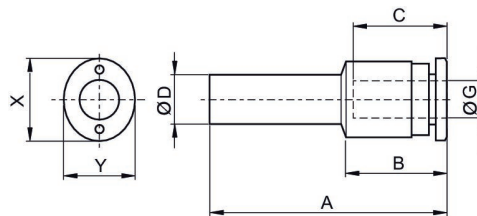
| | |
|------------------|------------------|
| Surface | nickel-plated |
| Housing material | Polyoxymethylene |

| | |
|------------------------------|--------------------------------|
| Seal material | Acrylonitrile butadiene rubber |
| Material tooth lock washer | Stainless Steel |
| Material release ring | Polyamide |
| Material release ring holder | Die cast zinc Brass |
| Surface release ring holder | nickel-plated |
| Part No. | 2121708040 |

Technical information

The series QR1 (plastic) and QR2 (metal) can not be combined

Dimensions



| Part No. | Port D | Port G | A | B | C Insertion depth | X | Y |
|------------|--------|--------|------|------|-------------------|----|----|
| 2121706040 | Ø 8 | Ø 4 | 40.6 | 18.2 | 16 | 12 | 10 |
| 2121708040 | Ø 8 | Ø 4 | 42.6 | 18.2 | 16 | 12 | 10 |
| 2121708060 | Ø 8 | Ø 4 | 43.3 | 19.2 | 17 | 14 | 12 |
| 2121710040 | Ø 8 | Ø 4 | 41.3 | 17.6 | 16 | 12 | 10 |
| 2121710060 | Ø 8 | Ø 4 | 45.3 | 19.2 | 17 | 14 | 12 |
| 2121710080 | Ø 8 | Ø 4 | 47.4 | 20.5 | 18.5 | 16 | 14 |
| 2121712060 | Ø 8 | Ø 4 | 48.2 | 19.2 | 17 | 14 | 12 |
| 2121712080 | Ø 8 | Ø 4 | 49.4 | 20.5 | 18.5 | 16 | 14 |
| 2121712100 | Ø 8 | Ø 4 | 52 | 23 | 21 | 19 | 17 |
| 2121714080 | Ø 8 | Ø 4 | 55.4 | 20.4 | 18.5 | 16 | 14 |
| 2121714100 | Ø 8 | Ø 4 | 58 | 23 | 21 | 19 | 17 |