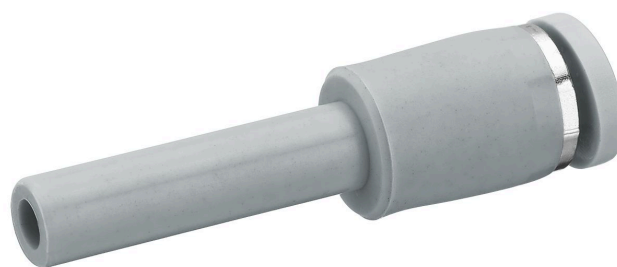


# QR1-S-RED standard series

2121708060

General series information  
AVENTICS Series QR1 Fittings

- AVENTICS Series QR1 push-in connectors with easy, secure mounting are available in many versions: for tubing diameters from 3 to 16 mm, as well as in plastic, metal, and stainless steel variants. QR1 Series offers a cylindric thread that allows repeated connection and release without problems (Quick Release) and captive O-ring guarantees an optimal sealing. Our QR program offers the right solution for every application and industry.



## Technical data

|                                  |   |
|----------------------------------|---|
| Industry                         | Industrial  |
| Fitting type                     | Straight push-in fitting, reducing push-in fitting  |
| Compressed air connection type   | Ø 6   |
| Port G                           | pin bushing   |
| Compressed air connection type 2 | Ø 8   |
| Port D                           | Due to product optimisation, the delivered article may currently deviate from the dimensions shown. |
| Note                             | QR1-S-RED   |
| Type                             | -0.95 bar   |
| Working pressure min.            | 10 bar  |
| Working pressure max             | 0 °C  |
| Min. ambient temperature         | 60 °C   |
| Max. ambient temperature         | 10 piece  |
| Delivery unit                    | 0.0042 kg   |
| Weight                           |   |

## Material

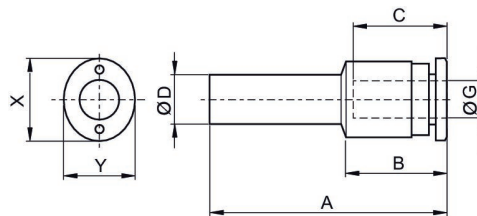
|         |               |
|---------|---------------|
| Surface | nickel-plated |
|---------|---------------|

|                              |                                |
|------------------------------|--------------------------------|
| Housing material             | Polyoxymethylene               |
| Seal material                | Acrylonitrile butadiene rubber |
| Material tooth lock washer   | Stainless Steel                |
| Material release ring        | Polyamide                      |
| Material release ring holder | Die cast zinc<br>Brass         |
| Surface release ring holder  | nickel-plated                  |
| Part No.                     | 2121708060                     |

## Technical information

The series QR1 (plastic) and QR2 (metal) can not be combined

### Dimensions



| Part No.   | Port D | Port G | A    | B    | C Insertion depth | X  | Y  |
|------------|--------|--------|------|------|-------------------|----|----|
| 2121706040 | Ø 8    | Ø 6    | 40.6 | 18.2 | 16                | 12 | 10 |
| 2121708040 | Ø 8    | Ø 6    | 42.6 | 18.2 | 16                | 12 | 10 |
| 2121708060 | Ø 8    | Ø 6    | 43.3 | 19.2 | 17                | 14 | 12 |
| 2121710040 | Ø 8    | Ø 6    | 41.3 | 17.6 | 16                | 12 | 10 |
| 2121710060 | Ø 8    | Ø 6    | 45.3 | 19.2 | 17                | 14 | 12 |
| 2121710080 | Ø 8    | Ø 6    | 47.4 | 20.5 | 18.5              | 16 | 14 |
| 2121712060 | Ø 8    | Ø 6    | 48.2 | 19.2 | 17                | 14 | 12 |
| 2121712080 | Ø 8    | Ø 6    | 49.4 | 20.5 | 18.5              | 16 | 14 |
| 2121712100 | Ø 8    | Ø 6    | 52   | 23   | 21                | 19 | 17 |
| 2121714080 | Ø 8    | Ø 6    | 55.4 | 20.4 | 18.5              | 16 | 14 |
| 2121714100 | Ø 8    | Ø 6    | 58   | 23   | 21                | 19 | 17 |