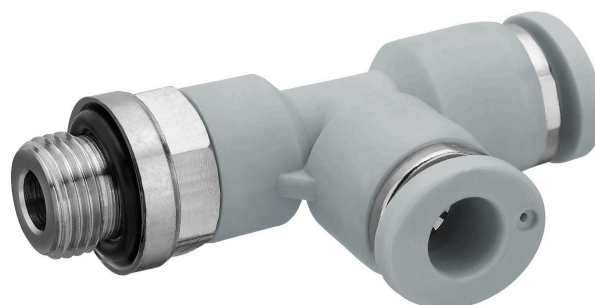


QR1-S-RLT standard series

R432000093

General series information
AVENTICS Series QR1 Fittings

- AVENTICS Series QR1 push-in connectors with easy, secure mounting are available in many versions: for tubing diameters from 3 to 16 mm, as well as in plastic, metal, and stainless steel variants. QR1 Series offers a cylindric thread that allows repeated connection and release without problems (Quick Release) and captive O-ring guarantees an optimal sealing. Our QR program offers the right solution for every application and industry.



Technical data

Industry	Industrial
Fitting type	Elbow fitting
Compressed air connection type	External thread
Port G	1/2 NPT
Compressed air connection type 2	push-in fitting
Port D	Ø1/2
Type	QR1-S-RLT
Working pressure min.	-0.95 bar
Working pressure max	10 bar
Min. ambient temperature	0 °C
Max. ambient temperature	60 °C
Weight	0.03 kg

Material

Surface	nickel-plated
Housing material	Polybutyleneterephthalate
Seal material	Acrylonitrile butadiene rubber
Material tooth lock washer	Stainless Steel

Material release ring	Polyoxymethylene
Material release ring holder	Die cast zinc Brass
Surface release ring holder	nickel-plated
Material thread	Brass
Surface thread	nickel-plated
Part No.	R432000093

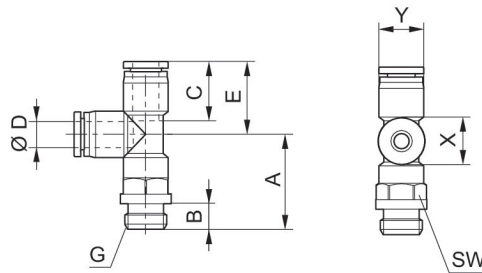
Technical information

The series QR1 (plastic) and QR2 (metal) can not be combined

Thread seal with captive O-ring

These pneumatic components with NPT or inch thread dimensions are only available from our US sales organization.

Dimensions in inches



Part No.	Port D	Port G	A	B	C	E	SW	X	Y
R432000107	Ø5/32	10-32 UNF	0.87	0.22	0.63	0.71	7/16"	0.47	0.39
R432000096	Ø1/4	10-32 UNF	0.91	0.22	0.67	0.81	1/2 "	0.55	0.47
R432000109	Ø5/32	1/8 NPT	0.97	0.32	0.63	0.71	7/16 "	0.47	0.39
R432000098	Ø1/4	1/8 NPT	0.99	0.32	0.67	0.81	1/2 "	0.55	0.47
R432000104	Ø5/16	1/8 NPT	1	0.32	0.73	0.89	9/16 "	0.63	0.55
R432000108	Ø5/32	1/4 NPT	1.09	0.43	0.63	0.71	9/16 "	0.47	0.39
R432000097	Ø1/4	1/4 NPT	1.14	0.43	0.67	0.81	9/16 "	0.55	0.47
R432000105	Ø5/16	1/4 NPT	1.16	0.43	0.73	0.89	9/16 "	0.63	0.55
R432000101	Ø3/8	1/4 NPT	1.38	0.43	0.83	1.03	11/16 "	0.75	0.67
R432000094	Ø1/2	1/4 NPT	1.46	0.43	0.89	1.14	7/8 "	0.91	0.83
R432000099	Ø1/4	3/8 NPT	1.22	0.47	0.67	0.81	11/16 "	0.55	0.47
R432000106	Ø5/16	3/8 NPT	1.2	0.47	0.73	0.89	11/16 "	0.63	0.55
R432000102	Ø 3/8	3/8 NPT	1.42	0.47	0.83	1.03	11/16 "	0.75	0.67
R432000095	Ø1/2	3/8 NPT	1.47	0.47	0.89	1.14	7/8 "	0.91	0.83
R432000103	Ø5/16	1/2 NPT	1.36	0.59	0.73	0.89	20 "	0.63	0.55
R432000100	Ø 3/8	1/2 NPT	1.54	0.59	0.83	1.03	7/8 "	0.75	0.67
R432000093	Ø1/2	1/2 NPT	1.62	0.59	0.89	1.14	7/8 "	0.91	0.83