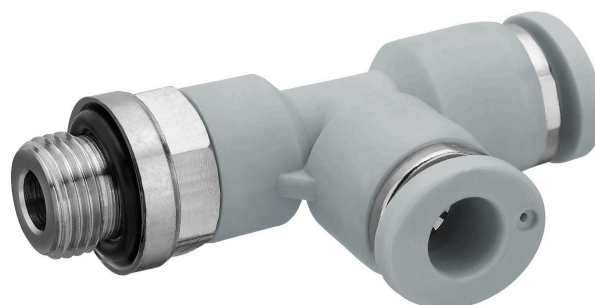


# QR1-S-RLT standard series

R432000109

General series information  
AVENTICS Series QR1 Fittings

- AVENTICS Series QR1 push-in connectors with easy, secure mounting are available in many versions: for tubing diameters from 3 to 16 mm, as well as in plastic, metal, and stainless steel variants. QR1 Series offers a cylindric thread that allows repeated connection and release without problems (Quick Release) and captive O-ring guarantees an optimal sealing. Our QR program offers the right solution for every application and industry.



## Technical data

|                                  |                 |
|----------------------------------|-----------------|
| Industry                         | Industrial      |
| Fitting type                     | Elbow fitting   |
| Compressed air connection type   | External thread |
| Port G                           | 1/8 NPT         |
| Compressed air connection type 2 | push-in fitting |
| Port D                           | Ø5/32           |
| Type                             | QR1-S-RLT       |
| Working pressure min.            | -0.95 bar       |
| Working pressure max             | 10 bar          |
| Min. ambient temperature         | 0 °C            |
| Max. ambient temperature         | 60 °C           |
| Weight                           | 0.014 kg        |

## Material

|                            |                                |
|----------------------------|--------------------------------|
| Surface                    | nickel-plated                  |
| Housing material           | Polybutyleneterephthalate      |
| Seal material              | Acrylonitrile butadiene rubber |
| Material tooth lock washer | Stainless Steel                |

|                              |                        |
|------------------------------|------------------------|
| Material release ring        | Polyoxymethylene       |
| Material release ring holder | Die cast zinc<br>Brass |
| Surface release ring holder  | nickel-plated          |
| Material thread              | Brass                  |
| Surface thread               | nickel-plated          |
| Part No.                     | R432000109             |

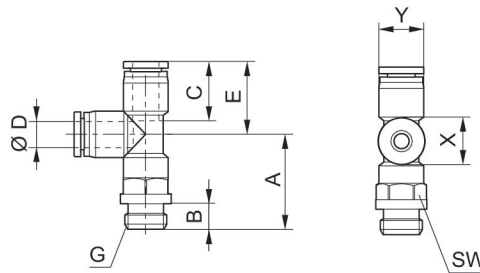
## Technical information

The series QR1 (plastic) and QR2 (metal) can not be combined

Thread seal with captive O-ring

These pneumatic components with NPT or inch thread dimensions are only available from our US sales organization.

## Dimensions in inches



| Part No.   | Port D | Port G    | A    | B    | C    | E    | SW      | X    | Y    |
|------------|--------|-----------|------|------|------|------|---------|------|------|
| R432000107 | Ø5/32  | 10-32 UNF | 0.87 | 0.22 | 0.63 | 0.71 | 7/16"   | 0.47 | 0.39 |
| R432000096 | Ø1/4   | 10-32 UNF | 0.91 | 0.22 | 0.67 | 0.81 | 1/2 "   | 0.55 | 0.47 |
| R432000109 | Ø5/32  | 1/8 NPT   | 0.97 | 0.32 | 0.63 | 0.71 | 7/16 "  | 0.47 | 0.39 |
| R432000098 | Ø1/4   | 1/8 NPT   | 0.99 | 0.32 | 0.67 | 0.81 | 1/2 "   | 0.55 | 0.47 |
| R432000104 | Ø5/16  | 1/8 NPT   | 1    | 0.32 | 0.73 | 0.89 | 9/16 "  | 0.63 | 0.55 |
| R432000108 | Ø5/32  | 1/4 NPT   | 1.09 | 0.43 | 0.63 | 0.71 | 9/16 "  | 0.47 | 0.39 |
| R432000097 | Ø1/4   | 1/4 NPT   | 1.14 | 0.43 | 0.67 | 0.81 | 9/16 "  | 0.55 | 0.47 |
| R432000105 | Ø5/16  | 1/4 NPT   | 1.16 | 0.43 | 0.73 | 0.89 | 9/16 "  | 0.63 | 0.55 |
| R432000101 | Ø3/8   | 1/4 NPT   | 1.38 | 0.43 | 0.83 | 1.03 | 11/16 " | 0.75 | 0.67 |
| R432000094 | Ø1/2   | 1/4 NPT   | 1.46 | 0.43 | 0.89 | 1.14 | 7/8 "   | 0.91 | 0.83 |
| R432000099 | Ø1/4   | 3/8 NPT   | 1.22 | 0.47 | 0.67 | 0.81 | 11/16 " | 0.55 | 0.47 |
| R432000106 | Ø5/16  | 3/8 NPT   | 1.2  | 0.47 | 0.73 | 0.89 | 11/16 " | 0.63 | 0.55 |
| R432000102 | Ø 3/8  | 3/8 NPT   | 1.42 | 0.47 | 0.83 | 1.03 | 11/16 " | 0.75 | 0.67 |
| R432000095 | Ø1/2   | 3/8 NPT   | 1.47 | 0.47 | 0.89 | 1.14 | 7/8 "   | 0.91 | 0.83 |
| R432000103 | Ø5/16  | 1/2 NPT   | 1.36 | 0.59 | 0.73 | 0.89 | 20 "    | 0.63 | 0.55 |
| R432000100 | Ø 3/8  | 1/2 NPT   | 1.54 | 0.59 | 0.83 | 1.03 | 7/8 "   | 0.75 | 0.67 |
| R432000093 | Ø1/2   | 1/2 NPT   | 1.62 | 0.59 | 0.89 | 1.14 | 7/8 "   | 0.91 | 0.83 |