

# QR1-S-RPN standard series

2121014380

General series information  
AVENTICS Series QR1 Fittings

- AVENTICS Series QR1 push-in connectors with easy, secure mounting are available in many versions: for tubing diameters from 3 to 16 mm, as well as in plastic, metal, and stainless steel variants. QR1 Series offers a cylindric thread that allows repeated connection and release without problems (Quick Release) and captive O-ring guarantees an optimal sealing. Our QR program offers the right solution for every application and industry.



## Technical data

Industry	Industrial
Fitting type	Straight fitting
Compressed air connection type	External thread
Port G	G 3/8
Compressed air connection type 2	push-in fitting
Port D	Ø 14
Note	Due to product optimisation, the delivered article may currently deviate from the dimensions shown.
Type	QR1-S-RPN
Working pressure min.	-0.95 bar
Working pressure max	10 bar
Min. ambient temperature	0 °C
Max. ambient temperature	60 °C
Delivery unit	10 piece
Weight	0.0455 kg
Material	
Surface	nickel-plated

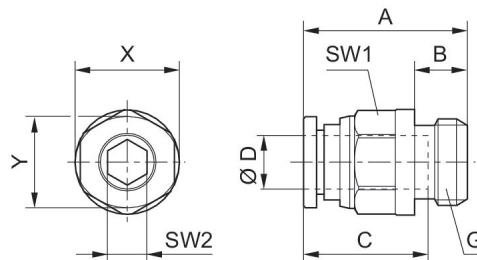
Housing material	Brass
Surface housing	nickel-plated
Seal material	Acrylonitrile butadiene rubber
Material tooth lock washer	Stainless Steel
Material release ring	Polyoxymethylene
Material release ring holder	Die cast zinc Brass
Surface release ring holder	nickel-plated
Material thread	Brass
Surface thread	nickel-plated
Part No.	2121014380

## Technical information

The series QR1 (plastic) and QR2 (metal) can not be combined

Thread seal with captive O-ring

## Dimensions



Part No.	Port D	Port G	A	B	C	SW1	SW2	X	Y
2121004050	M5	Ø 4	21.5	4	16	10	–	12	10
2121006050	M5	Ø 6	24.5	4	17	12	–	14	10
2121004180	G 1/8	Ø 4	20.1	5	16	10	3	12	10
2121006180	G 1/8	Ø 6	24.6	5	17	12	4	14	12
2121008180	G 1/8	Ø 8	26.5	5	18.5	14	5	16	14
R412005002	G 1/8	Ø 10	28.9	5	21	17	4	19	17
R412005003	G 1/8	Ø 12	33.5	5	22.5	21	4	23	21
2121004140	G 1/4	Ø 4	19.1	6	16	10	3	12	10
2121006140	G 1/4	Ø 6	21.6	6	17	12	4	14	12
2121008140	G 1/4	Ø 8	22.4	6	18.5	14	6	16	14
2121010140	G 1/4	Ø 10	29.9	6	21	17	7	19	17
2121012140	G 1/4	Ø 12	33.4	6	22.5	21	7	23	21
R412005000	G 3/8	Ø 6	21.6	7	17	12	4	14	12
2121008380	G 3/8	Ø 8	23.2	7	18.5	14	6	16	14
2121010380	G 3/8	Ø 10	25.9	7	21	17	8	19	17
2121012380	G 3/8	Ø 12	33.5	7	23	21	9	23	21

Part No.	Port D	Port G	A	B	C	SW1	SW2	X	Y
2121014380	G 3/8	Ø 14	30.1	7	24.6	22	9	25	23
R412005005	G 3/8	Ø16	35.3	7	25.5	24	8	27	24
R412005001	G 1/2	Ø 8	25.7	8.5	18.5	14	6	16	14
2121010120	G 1/2	Ø 10	27.4	8.5	21	17	8	19	17
2121012120	G 1/2	Ø 12	29.5	8.5	23	21	10	23	21
2121014120	G 1/2	Ø14	36.1	8.5	24.6	24	11	25	23
R412005006	G 1/2	Ø16	36.3	8.5	25.5	24	10	27	24