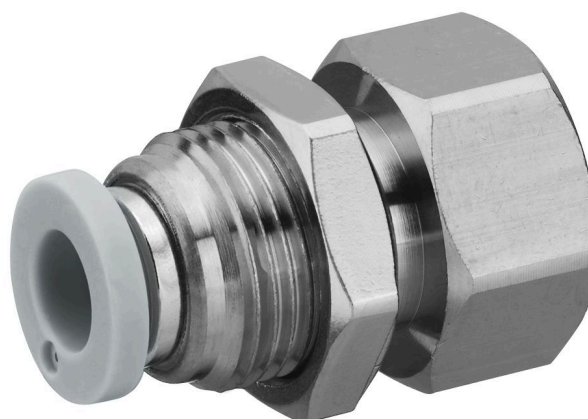


# QR1-S-RSI standard series

R432000147

General series information  
AVENTICS Series QR1 Fittings

- AVENTICS Series QR1 push-in connectors with easy, secure mounting are available in many versions: for tubing diameters from 3 to 16 mm, as well as in plastic, metal, and stainless steel variants. QR1 Series offers a cylindric thread that allows repeated connection and release without problems (Quick Release) and captive O-ring guarantees an optimal sealing. Our QR program offers the right solution for every application and industry.



## Technical data

|                                  |                    |
|----------------------------------|--------------------|
| Industry                         | Industrial         |
| Fitting type                     | Bulkhead connector |
| Compressed air connection type   | Internal thread    |
| Port G                           | 1/4 NPT            |
| Compressed air connection type 2 | push-in fitting    |
| Port D                           | Ø5/16              |
| Type                             | QR1-S-RSI          |
| Working pressure min.            | -0.95 bar          |
| Working pressure max             | 10 bar             |
| Min. ambient temperature         | 0 °C               |
| Max. ambient temperature         | 60 °C              |
| Delivery unit                    | 10 piece           |
| Weight                           | 0.041 kg           |

## Material

|                  |               |
|------------------|---------------|
| Surface          | nickel-plated |
| Housing material | Brass         |
| Surface housing  | nickel-plated |

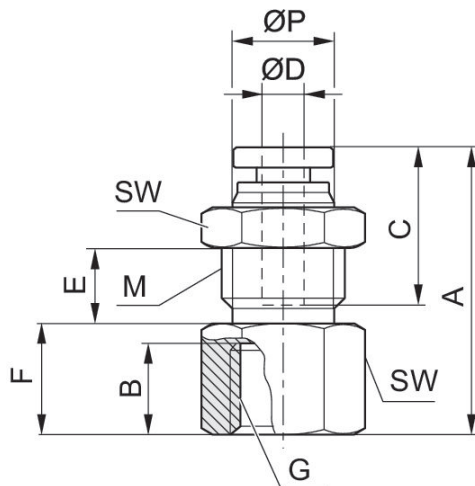
|                              |                                |
|------------------------------|--------------------------------|
| Seal material                | Acrylonitrile butadiene rubber |
| Material tooth lock washer   | Stainless Steel                |
| Material release ring        | Polyoxymethylene               |
| Material release ring holder | Die cast zinc<br>Brass         |
| Surface release ring holder  | nickel-plated                  |
| Material thread              | Brass                          |
| Surface thread               | nickel-plated                  |
| Part No.                     | R432000147                     |

### Technical information

The series QR1 (plastic) and QR2 (metal) can not be combined

These pneumatic components with NPT or inch thread dimensions are only available from our US sales organization.

### Dimensions in inches



### Dimensions in inches

| Part No.   | Port D | Port G  | M        | A    | B    | C    | E    | F    | SW    |
|------------|--------|---------|----------|------|------|------|------|------|-------|
| R432000144 | Ø1/4   | 1/8 NPT | 9/16 UNF | 1.08 | 0.36 | 0.67 | 0.25 | 0.35 | 11/16 |
| R432000143 | Ø1/4   | 1/4 NPT | 9/16 UNF | 1.26 | 0.47 | 0.67 | 0.25 | 0.53 | 11/16 |
| R432000147 | Ø5/16  | 1/4 NPT | 5/8 UNF  | 1.41 | 0.47 | 0.73 | 0.33 | 0.55 | 3/4   |
| R432000145 | Ø 3/8  | 1/4 NPT | 7/8 UNF  | 1.4  | 0.47 | 0.83 | 0.23 | 0.55 | 1     |
| R432000149 | Ø5/16  | 3/8 NPT | 5/8 UNF  | 1.45 | 0.51 | 0.73 | 0.33 | 0.59 | 3/4   |
| R432000146 | Ø 3/8  | 3/8 NPT | 7/8 UNF  | 1.44 | 0.51 | 0.83 | 0.23 | 0.59 | 1     |
| R432000142 | Ø1/2   | 3/8 NPT | 7/8 UNF  | 1.52 | 0.51 | 0.89 | 0.34 | 0.59 | 1     |

| Part No.   | Ø P  |
|------------|------|
| R432000144 | 0.47 |
| R432000143 | 0.47 |

| Part No.   | Ø P  |
|------------|------|
| R432000147 | 0.55 |
| R432000145 | 0.67 |
| R432000149 | 0.55 |
| R432000146 | 0.67 |
| R432000142 | 0.8  |