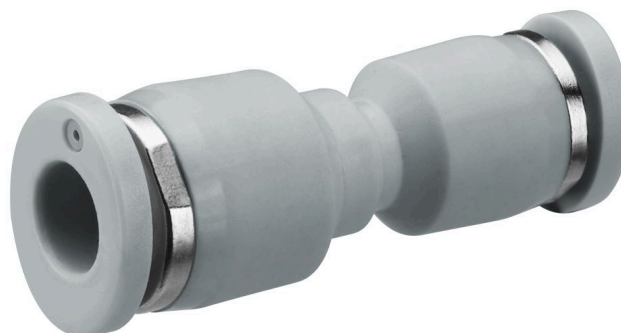


# QR1-S-RSR standard series

R432000164

General series information  
AVENTICS Series QR1 Fittings

- AVENTICS Series QR1 push-in connectors with easy, secure mounting are available in many versions: for tubing diameters from 3 to 16 mm, as well as in plastic, metal, and stainless steel variants. QR1 Series offers a cylindric thread that allows repeated connection and release without problems (Quick Release) and captive O-ring guarantees an optimal sealing. Our QR program offers the right solution for every application and industry.



## Technical data

|                                  |                                   |
|----------------------------------|-----------------------------------|
| Industry                         | Industrial                        |
| Fitting type                     | Straight plug connector, reducing |
| Compressed air connection type   | push-in fitting                   |
| Port G                           | Ø1/4                              |
| Compressed air connection type 2 | push-in fitting                   |
| Port D                           | Ø5/16                             |
| Type                             | QR1-S-RSR                         |
| Working pressure min.            | -0.95 bar                         |
| Working pressure max             | 10 bar                            |
| Min. ambient temperature         | 0 °C                              |
| Max. ambient temperature         | 60 °C                             |
| Delivery unit                    | 10 piece                          |
| Weight                           | 0.005 kg                          |

## Material

|                  |                                |
|------------------|--------------------------------|
| Surface          | nickel-plated                  |
| Housing material | Polybutyleneterephthalate      |
| Seal material    | Acrylonitrile butadiene rubber |

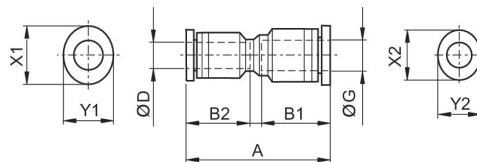
|                              |                        |
|------------------------------|------------------------|
| Material tooth lock washer   | Stainless Steel        |
| Material release ring        | Polyoxymethylene       |
| Material release ring holder | Die cast zinc<br>Brass |
| Surface release ring holder  | nickel-plated          |
| Part No.                     | R432000164             |

## Technical information

The series QR1 (plastic) and QR2 (metal) can not be combined

These pneumatic components with NPT or inch thread dimensions are only available from our US sales organization.

## Dimensions in inches



## Dimensions in inches

| Part No.   | Port D | Port G | A    | B1   | B2   | X1    | Y1    | X2    | Y2   |
|------------|--------|--------|------|------|------|-------|-------|-------|------|
| R432000162 | Ø1/4   | Ø5/32  | 1.41 | 0.71 | 0.63 | 0.552 | 0.473 | 0.473 | 0.39 |
| R432000164 | Ø5/16  | Ø1/4   | 1.53 | 0.73 | 0.67 | 0.63  | 0.552 | 0.552 | 0.47 |
| R432000161 | Ø 3/8  | Ø1/4   | 1.69 | 0.83 | 0.76 | 0.749 | 0.552 | 0.552 | 0.47 |
| R432000163 | Ø 3/8  | Ø5/16  | 1.68 | 0.83 | 0.73 | 0.749 | 0.67  | 0.63  | 0.55 |
| R432000160 | Ø 3/8  | Ø1/2   | 1.83 | 0.88 | 0.83 | 0.906 | 0.827 | 0.749 | 0.67 |