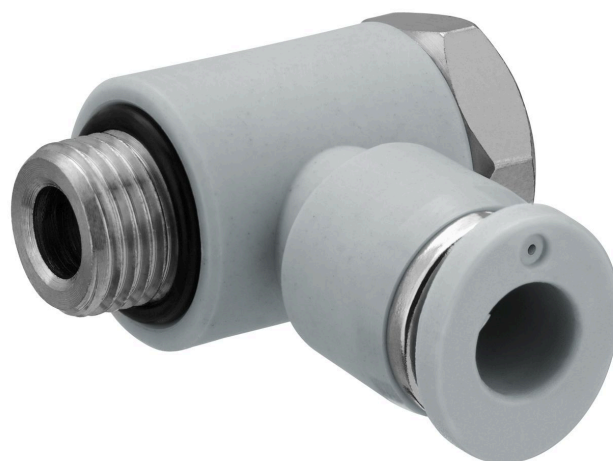


QR1-S-RW1 standard series

R432000254

General series information AVENTICS Series QR1 Fittings

- AVENTICS Series QR1 push-in connectors with easy, secure mounting are available in many versions: for tubing diameters from 3 to 16 mm, as well as in plastic, metal, and stainless steel variants. QR1 Series offers a cylindric thread that allows repeated connection and release without problems (Quick Release) and captive O-ring guarantees an optimal sealing. Our QR program offers the right solution for every application and industry.



Technical data

Industry	Industrial
Fitting type	Swivel banjo connection 1-fold
Compressed air connection type	External thread
Port G	10-32 UNF
Compressed air connection type 2	push-in fitting
Port D	Ø5/32
Type	QR1-S-RW1
Working pressure min.	-0.95 bar
Working pressure max	10 bar
Min. ambient temperature	0 °C
Max. ambient temperature	60 °C
Weight	0.05 kg

Material

Surface	nickel-plated
Housing material	Polybutyleneterephthalate
Seal material	Acrylonitrile butadiene rubber
Material tooth lock washer	Stainless Steel

Material release ring	Polyoxymethylene
Material release ring holder	Die cast zinc Brass
Surface release ring holder	nickel-plated
Material thread	Brass
Surface thread	nickel-plated
Part No.	R432000254

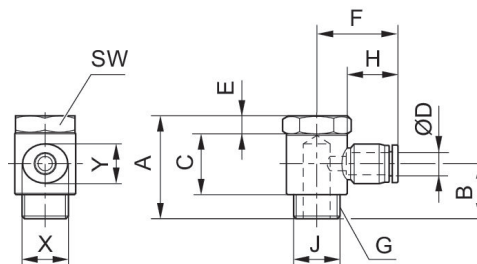
Technical information

The series QR1 (plastic) and QR2 (metal) can not be combined

Thread seal with captive O-ring

These pneumatic components with NPT or inch thread dimensions are only available from our US sales organization.

Dimensions in inches



Dimensions in inches

Part No.	Port D	Port G	A	B	C	E	F	H	Ø J
R432000254	Ø5/32	10-32 UNF	0.61	–	0.351	0.118	0.78	0.63	0.41
R432000255	Ø5/32	1/8 NPT	0.95	–	0.473	0.158	0.85	0.63	0.57
R432000248	Ø1/4	1/8 NPT	0.95	–	0.473	0.158	0.93	0.67	0.57
R432000253	Ø5/16	1/8 NPT	1.08	–	0.465	0.177	1.12	0.73	0.73
R432000249	Ø1/4	1/4 NPT	1.08	–	0.465	0.177	1.01	0.67	0.73
R432000250	Ø3/8	1/4 NPT	1.08	–	0.465	0.177	1.25	0.83	0.73
R432000252	Ø5/16	1/4 NPT	1.15	–	0.611	0.197	1.13	0.73	0.87
R432000251	Ø3/8	3/8 NPT	1.28	–	0.611	0.197	1.26	0.83	0.87
R432000247	Ø1/2	3/8 NPT	1.28	–	0.611	0.197	1.43	0.89	0.87
R432000246	Ø1/2	1/2 NPT	1.49	–	0.697	0.197	1.43	0.89	1.1

Part No.	SW	X	Y
R432000254	13/32	0.47	0.39
R432000255	7/16	0.47	0.39
R432000248	7/16	0.55	0.47
R432000253	9/16	0.63	0.55
R432000249	9/16	0.55	0.47
R432000250	9/16	0.75	0.67

Part No.	SW	X	Y
R432000252	9/16	0.63	0.55
R432000251	3/4	0.75	0.67
R432000247	3/4	0.91	0.83
R432000246	1	0.91	0.83