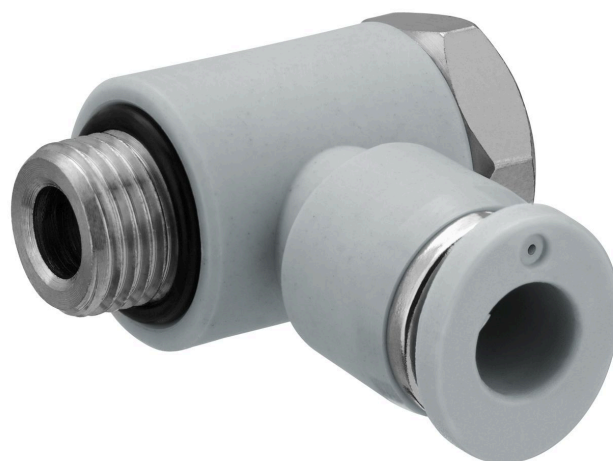


QR1-S-RW1 standard series

R432000255

General series information AVENTICS Series QR1 Fittings

- AVENTICS Series QR1 push-in connectors with easy, secure mounting are available in many versions: for tubing diameters from 3 to 16 mm, as well as in plastic, metal, and stainless steel variants. QR1 Series offers a cylindric thread that allows repeated connection and release without problems (Quick Release) and captive O-ring guarantees an optimal sealing. Our QR program offers the right solution for every application and industry.



Technical data

| | |
|----------------------------------|--------------------------------|
| Industry | Industrial |
| Fitting type | Swivel banjo connection 1-fold |
| Compressed air connection type | External thread |
| Port G | 1/8 NPT |
| Compressed air connection type 2 | push-in fitting |
| Port D | Ø5/32 |
| Type | QR1-S-RW1 |
| Working pressure min. | -0.95 bar |
| Working pressure max | 10 bar |
| Min. ambient temperature | 0 °C |
| Max. ambient temperature | 60 °C |
| Weight | 0.053 kg |

Material

| | |
|----------------------------|--------------------------------|
| Surface | nickel-plated |
| Housing material | Polybutyleneterephthalate |
| Seal material | Acrylonitrile butadiene rubber |
| Material tooth lock washer | Stainless Steel |

| | |
|------------------------------|------------------------|
| Material release ring | Polyoxymethylene |
| Material release ring holder | Die cast zinc Brass |
| Surface release ring holder | nickel-plated |
| Material thread | Brass |
| Surface thread | nickel-plated |
| Part No. | R432000255 |

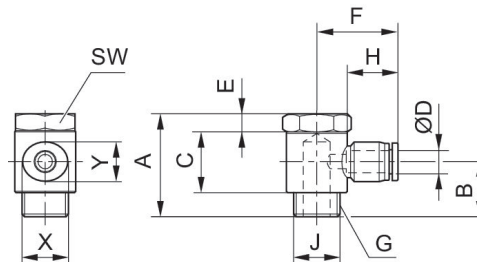
Technical information

The series QR1 (plastic) and QR2 (metal) can not be combined

Thread seal with captive O-ring

These pneumatic components with NPT or inch thread dimensions are only available from our US sales organization.

Dimensions in inches



Dimensions in inches

| Part No. | Port D | Port G | A | B | C | E | F | H | Ø J |
|------------|--------|-----------|------|---|-------|-------|------|------|------|
| R432000254 | Ø5/32 | 10-32 UNF | 0.61 | – | 0.351 | 0.118 | 0.78 | 0.63 | 0.41 |
| R432000255 | Ø5/32 | 1/8 NPT | 0.95 | – | 0.473 | 0.158 | 0.85 | 0.63 | 0.57 |
| R432000248 | Ø1/4 | 1/8 NPT | 0.95 | – | 0.473 | 0.158 | 0.93 | 0.67 | 0.57 |
| R432000253 | Ø5/16 | 1/8 NPT | 1.08 | – | 0.465 | 0.177 | 1.12 | 0.73 | 0.73 |
| R432000249 | Ø1/4 | 1/4 NPT | 1.08 | – | 0.465 | 0.177 | 1.01 | 0.67 | 0.73 |
| R432000250 | Ø3/8 | 1/4 NPT | 1.08 | – | 0.465 | 0.177 | 1.25 | 0.83 | 0.73 |
| R432000252 | Ø5/16 | 1/4 NPT | 1.15 | – | 0.611 | 0.197 | 1.13 | 0.73 | 0.87 |
| R432000251 | Ø3/8 | 3/8 NPT | 1.28 | – | 0.611 | 0.197 | 1.26 | 0.83 | 0.87 |
| R432000247 | Ø1/2 | 3/8 NPT | 1.28 | – | 0.611 | 0.197 | 1.43 | 0.89 | 0.87 |
| R432000246 | Ø1/2 | 1/2 NPT | 1.49 | – | 0.697 | 0.197 | 1.43 | 0.89 | 1.1 |

| Part No. | SW | X | Y |
|------------|-------|------|------|
| R432000254 | 13/32 | 0.47 | 0.39 |
| R432000255 | 7/16 | 0.47 | 0.39 |
| R432000248 | 7/16 | 0.55 | 0.47 |
| R432000253 | 9/16 | 0.63 | 0.55 |
| R432000249 | 9/16 | 0.55 | 0.47 |
| R432000250 | 9/16 | 0.75 | 0.67 |

| Part No. | SW | X | Y |
|------------|------|------|------|
| R432000252 | 9/16 | 0.63 | 0.55 |
| R432000251 | 3/4 | 0.75 | 0.67 |
| R432000247 | 3/4 | 0.91 | 0.83 |
| R432000246 | 1 | 0.91 | 0.83 |