

AVENTICS Series QR2 Fittings

AVENTICS Series QR2, push-in connectors with easy, secure mounting are available in many versions: In metal for tubing diameters from 3 to 16 mm. QR2 Series offers a cylindric thread that allows repeated connection and release without problems (Quick Release) and captive O-ring guarantees an optimal sealing. Our QR program offers the right solution for every application and industry.



Technical data

| | |
|-------------------------------------|-------------------------------------|
| Industry | Industrial |
| Fitting type | Straight fitting |
| Compressed air connection type | External thread |
| Port G | M7 |
| Compressed air connection type 2 | push-in fitting |
| Port D | Ø 4 |
| Type | QR2-C-RPN |
| suitable for use in food processing | suitable for use in food processing |
| Min. working pressure | -0.95 bar |
| Max. working pressure | 16 bar |
| Min. ambient temperature | -20 °C |
| Max. ambient temperature | 150 °C |
| Delivery unit | 2 piece |
| Weight | 0.01 kg |

Material

| | |
|----------------------------|-----------------|
| Housing material | Stainless Steel |
| Seal material | Fluorocautchouc |
| Material tooth lock washer | Stainless Steel |

Series QR2-C-RPN, stainless steel

2024-04-10

R412010036

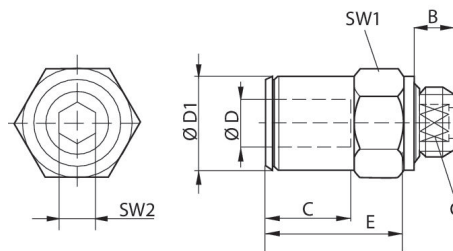
| | |
|-----------------------|-----------------|
| Material release ring | Stainless Steel |
| Material thread | Stainless Steel |
| Part No. | R412010036 |

Technical information

The series QR1 (plastic) and QR2 (metal) can not be combined

Thread seal with captive O-ring

Dimensions



| Part No. | Port D | Port G | A | B | C | E* | SW1 | SW2 | ØD1 |
|------------|--------|--------|------|-----|------|----|-----|-----|-----|
| 2544004050 | Ø 4 | M5 | 20.5 | 4 | 7 | 15 | 9 | – | 9 |
| R412026847 | Ø 6 | M5 | 22.5 | 4 | – | 16 | 9 | – | 11 |
| R412010036 | Ø 4 | M7 | 22.5 | 5.5 | 5 | 15 | 11 | 2.5 | 9 |
| R412010037 | Ø 6 | M7 | 24 | 5.5 | 6 | 16 | 11 | 3.5 | 11 |
| R412004890 | Ø 4 | G 1/8 | 17 | 5.5 | 7 | 15 | 13 | 3 | 9 |
| R412004891 | Ø 6 | G 1/8 | 23.5 | 5.5 | 12.5 | 16 | 13 | 4 | 11 |
| R412004892 | Ø 8 | G 1/8 | 23.5 | 5.5 | 12.5 | 18 | 13 | 5 | 13 |
| R412004893 | Ø 6 | G 1/4 | 21.5 | 6.5 | 5.5 | 16 | 16 | 4 | 11 |
| R412004894 | Ø 8 | G 1/4 | 25.5 | 6.5 | 9.5 | 16 | 16 | 6 | 13 |
| R412004895 | Ø 10 | G 1/4 | 27.5 | 6.5 | 7.5 | 16 | 16 | 7 | 15 |
| R412004896 | Ø 10 | G 3/8 | 25.5 | 9 | 7 | 19 | 21 | 8 | 15 |
| R412004897 | Ø 12 | G 3/8 | 31 | 9 | 7 | 20 | 21 | 10 | 17 |
| R412010043 | Ø 10 | G 1/2 | 29 | 9 | 7 | 19 | 23 | 8 | 15 |
| R412010524 | Ø 12 | G 1/2 | 29 | 9 | 7 | 20 | 23 | 10 | 17 |

* Insertion depth