

## AVENTICS Series QR2 Fittings

AVENTICS Series QR2, push-in connectors with easy, secure mounting are available in many versions: In metal for tubing diameters from 3 to 16 mm. QR2 Series offers a cylindric thread that allows repeated connection and release without problems (Quick Release) and captive O-ring guarantees an optimal sealing. Our QR program offers the right solution for every application and industry.



## Technical data

|                                  |                    |
|----------------------------------|--------------------|
| Industry                         | Industrial         |
| Fitting type                     | T-Banjo connection |
| Compressed air connection type   | External thread    |
| Port G                           | G 1/4              |
| Compressed air connection type 2 | push-in fitting    |
| Port D                           | Ø 10               |
| Type                             | QR2-S-RTS          |
| Min. working pressure            | -0.95 bar          |
| Max. working pressure            | 16 bar             |
| Min. ambient temperature         | -20 °C             |
| Max. ambient temperature         | 80 °C              |
| Delivery unit                    | 5 piece            |
| Weight                           | 0.063 kg           |

## Material

|                            |                                |
|----------------------------|--------------------------------|
| Housing material           | Brass                          |
| Surface housing            | nickel-plated                  |
| Seal material              | Acrylonitrile butadiene rubber |
| Material tooth lock washer | Stainless Steel                |

# Series QR2-S-RTS standard

2024-04-10

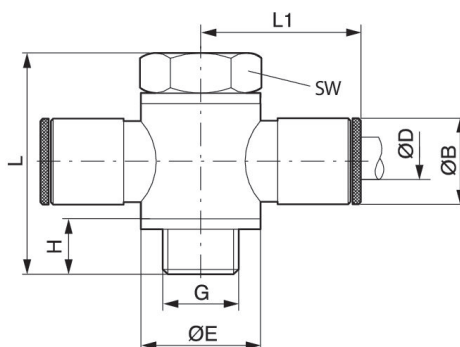
1823391570

|                       |               |
|-----------------------|---------------|
| Material release ring | Brass         |
| Surface release ring  | nickel-plated |
| Material thread       | Brass         |
| Surface thread        | nickel-plated |
| Part No.              | 1823391570    |

## Technical information

The series QR1 (plastic) and QR2 (metal) can not be combined

Thread seal with captive O-ring



| Part No.   | Port D | Port G | Ø B | Ø E | H   | L    | L1   | SW |
|------------|--------|--------|-----|-----|-----|------|------|----|
| 1823391562 | Ø 4    | M5     | 9   | 8   | 4.5 | 17.5 | 18.5 | 8  |
| 1823391563 | Ø 5    | M5     | 10  | 7   | 4.5 | 17.5 | 19.5 | 8  |
| 1823391564 | Ø 4    | G 1/8  | 9   | 14  | 7.5 | 28   | 21   | 14 |
| 1823391565 | Ø 5    | G 1/8  | 10  | 14  | 7.5 | 28   | 22.5 | 14 |
| 1823391566 | Ø 6    | G 1/8  | 11  | 14  | 7.5 | 28   | 23   | 14 |
| 1823391567 | Ø 8    | G 1/8  | 13  | 14  | 7.5 | 28   | 24.5 | 14 |
| 1823391568 | Ø 6    | G 1/4  | 11  | 18  | 9   | 33   | 24   | 17 |
| 1823391569 | Ø 8    | G 1/4  | 13  | 18  | 9   | 33   | 26   | 17 |
| 1823391570 | Ø 10   | G 1/4  | 15  | 18  | 9   | 33   | 27   | 17 |
| 1823391571 | Ø 8    | G 3/8  | 13  | 21  | 9.5 | 36   | 28   | 22 |
| 1823391572 | Ø 10   | G 3/8  | 15  | 21  | 9.5 | 36   | 29   | 22 |
| 1823391573 | Ø 12   | G 3/8  | 17  | 21  | 9.5 | 36   | 30   | 22 |