

## AVENTICS Series SA1 Industrial shock absorbers

The AVENTICS Series SA1 industrial shock absorbers decelerate reliably moving masses and thereby increase process speed, production quality, the service life of production facilities and reduce operating noise.



### Technical data

|                               |            |
|-------------------------------|------------|
| Industry                      | Industrial |
| Type                          | SA1-MA     |
| Mounting thread               | M20x1,5    |
| Stroke                        | 19 mm      |
| Max. energy absorption/stroke | 100 Nm     |
| Max. energy absorption/hour   | 76500 Nm   |
| Cushioning                    | adjustable |
| Medium                        | Oil        |
| Min. ambient temperature      | -20 °C     |
| Max. ambient temperature      | 80 °C      |
| Effective mass $m_e$ min.     | 9 kg       |
| Effective mass $m_e$ max.     | 4500 kg    |
| Min. return spring force      | 12 N       |
| Max. return spring force      | 23 N       |
| Min. impact speed             | 0.1 m/s    |
| Max. impact speed             | 6 m/s      |
| Mounting                      | Lock nut   |
| Weight                        | 0.14 kg    |

# Industrial shock absorber, Series SA1-MA

R412010324

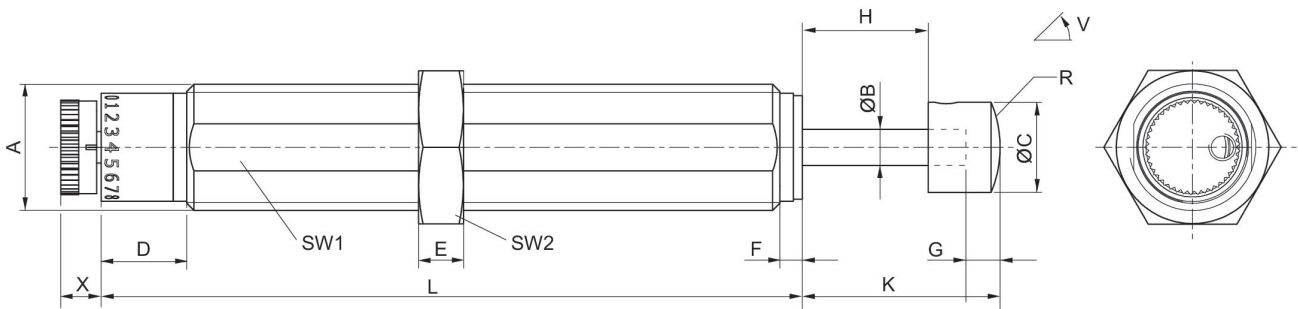
Series SA1

2024-01-10

## Material

|                        |                           |
|------------------------|---------------------------|
| Material cylinder tube | Steel, chrome-plated      |
| Surface cylinder tube  | salt bath nitrocarburized |
| Material piston rod    | Stainless Steel           |
| Surface piston rod     | ground and hardened       |
| Material stop          | Steel, chrome-plated      |
| Surface stop           | hardened and bronzed      |
| Material lock nut      | Steel, chrome-plated      |
| Surface lock nut       | salt bath nitrocarburized |
| Scraper material       | Polyurethane              |
| Part No.               | R412010324                |

## Dimensions



A = mounting thread  
V = tilt

| Part No.   | Type   | Mounting thread | ØB | ØC | D   | E | F   | G | H  |
|------------|--------|-----------------|----|----|-----|---|-----|---|----|
| R412010323 | SA1-MA | M14x1,5         | 4  | 10 | 9.5 | 5 | 2.5 | 4 | 14 |
| R412010324 | SA1-MA | M20x1,5         | 6  | 16 | 10  | 6 | 2.5 | 4 | 19 |
| R412010325 | SA1-MA | M25x1,5         | 8  | 20 | 9   | 8 | 3.5 | 5 | 25 |
| R412028891 | SA1-MA | M27x2           | 8  | 20 |     | 8 | 3.5 |   | 25 |
| R412010326 | SA1-MA | M25x1,5         | 8  | 20 | 9   | 8 | 3.5 | 5 | 40 |
| R412028892 | SA1-MA | M27x2           | 8  | 20 |     | 8 | 3.5 |   | 40 |

| Part No.   | K  | L   | R    | SW1 | SW2 | W [°] | X   |
|------------|----|-----|------|-----|-----|-------|-----|
| R412010323 | 22 | 78  | 13   | 13  | 17  | 5     | 4.5 |
| R412010324 | 29 | 88  | 32.5 | 18  | 24  | 2     | 5.7 |
| R412010325 | 38 | 108 | 30.3 | 23  | 30  | 2     | 8.3 |
| R412028891 | 38 | 108 |      | 24  | 30  |       | 8   |
| R412010326 | 53 | 130 | 30.3 | 23  | 30  | 1     | 8   |
| R412028892 | 53 | 130 |      | 24  | 30  |       | 8   |