

AVENTICS Series SA1 Industrial shock absorbers

The AVENTICS Series SA1 industrial shock absorbers decelerate reliably moving masses and thereby increase process speed, production quality, the service life of production facilities and reduce operating noise.



Technical data

Industry	Industrial
Type	SA1-MC
Mounting thread	M20x1,5
Stroke	13 mm
Max. energy absorption/stroke	65 Nm
Max. energy absorption/hour	52000 Nm
Cushioning	self-compensating
Medium	Oil
Min. ambient temperature	-20 °C
Max. ambient temperature	80 °C
Effective mass m_e min.	7.5 kg
Effective mass m_e max.	36 kg
Min. return spring force	12 N
Max. return spring force	23 N
Mounting	Lock nut
Weight	0.15 kg

Material

Material cylinder tube	Steel, chrome-plated
------------------------	----------------------

Industrial shock absorber, Series SA1-MC

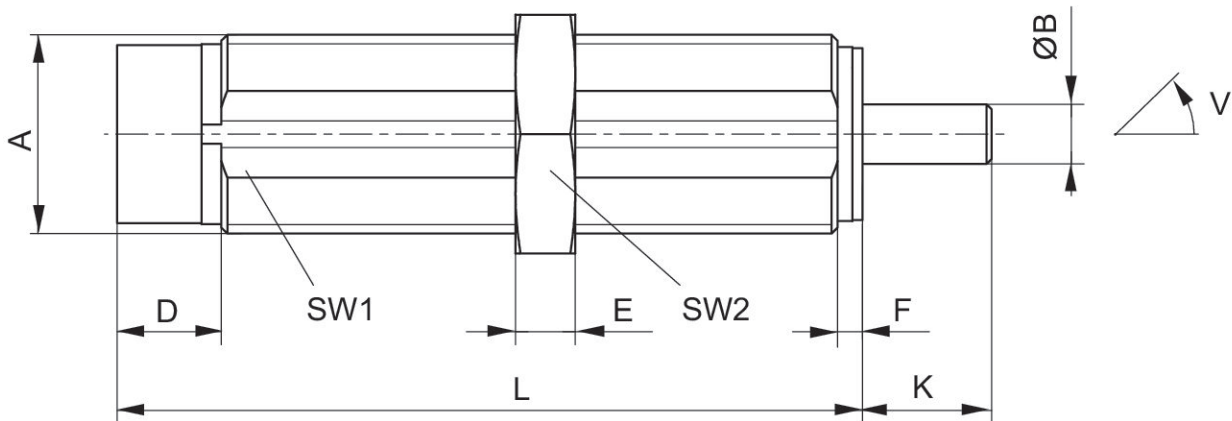
Series SA1

R412010307

2024-01-10

Surface cylinder tube	salt bath nitrocarburized
Material piston rod	Stainless Steel
Surface piston rod	ground and hardened
Material lock nut	Steel, chrome-plated
Surface lock nut	salt bath nitrocarburized
Scraper material	Polyurethane
Part No.	R412010307

Dimensions



A = mounting thread
V = tilt

Part No.	Type	Mounting thread	ØB	D	E	F	K	L	SW1
R412010307	SA1-MC	M20x1,5	6	10.5	6	2.5	13	75	18
R412010308	SA1-MC	M20x1,5	6	10.5	6	2.5	13	75	18
R412010309	SA1-MC	M20x1,5	6	10.5	6	2.5	13	75	18
R412010310	SA1-MC	M25x1,5	8	9.5	8	3.5	25	108	23
R412010311	SA1-MC	M25x1,5	8	9.5	8	3.5	25	108	23
R412010312	SA1-MC	M25x1,5	8	9.5	8	3.5	25	108	23

Part No.	SW2	W [°]
R412010307	24	4
R412010308	24	4
R412010309	24	4
R412010310	30	2
R412010311	30	2

Industrial shock absorber, Series SA1-MC

Series SA1

R412010307

2024-01-10

Part No.	SW2	W [°]
R412010312	30	2