

5/2-directional valve, Series TC08, with detent, double Solenoid

R422103052

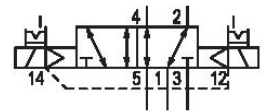
Series
TC08

2024-10-17

- Excellent ratio of installation space and flow rate
- Large selection of electrical connections
- Electrical or pneumatic operated
- Long service life
- Adjustable coil with four 90° positions

AVENTICS Series TC08 Directional valves

The AVENTICS Series TC08/TC15 includes a wide range of spool valves with housings made of high-performance polymers with robust and flexible metal inserts. It is designed for flow rate performances from 800 to 1500 l/min. These directional valves are easy to assemble, making them ideal for applications requiring the highest efficiency in limited spaces.



Technical data

Industry

Activation

Valve type

Basic valve equipment

Switching principle

Actuating control

Sealing principle

Connection type

Manual override

Industrial

Electrically

Spool valve, positive overlapping

Basic valve without coil

5/2, double solenoid

single

Soft seal

Pipe connection

with detent

Compressed air connection input

G 1/8

Compressed air connection output

G 1/8

Compressed air connection, exhaust

G 1/8

Nominal flow Qn

800 l/min

Flow conductance b

0.36

Flow conductance C

3.5 l/(s*bar)

Min. working pressure

-0.9 bar

5/2-directional valve, Series TC08, with detent, double Solenoid

Series
TC08

2024-10-17

R422103052

Max. working pressure 10 bar

Min. control pressure 2 bar

Max. control pressure 10 bar

Electrical connection type Plug

Electrical connection size ISO 15217, form C

Connector standard ISO 15217

Protection class with connection IP65

Pilot External

Coil width 15.6 mm

Pilot valve width 15 mm

Duty cycle 100 %

Typ. switch-on time 10 ms

Typ. switch-off time 10 ms

Min. ambient temperature -10 °C

Max. ambient temperature 50 °C

Min. medium temperature -10 °C

Max. medium temperature 50 °C

Medium Compressed air

Min. oil content of compressed air 0 mg/m³

Max. oil content of compressed air 5 mg/m³

Max. particle size 5 µm

Mounting on manifold strip P-strip

Mounting screw tightening torque 2 Nm

Weight 0.172 kg

Material

Housing material Polyamide fiber-glass reinforced

Seal material Acrylonitrile butadiene rubber
Polyurethane

Material threaded bushing Brass
Die cast zinc

Material front plate Polyamide fiber-glass reinforced

Part No. R422103052

5/2-directional valve, Series TC08, with detent, double Solenoid

R422103052

Series
TC08

2024-10-17

Technical information

The min. control pressure must be adhered to, since otherwise faulty switching and valve failure may result!

The pressure dew point must be at least 15 °C less than ambient and medium temperature and may not exceed 3 °C.

The oil content of compressed air must remain constant during the life cycle.

Use only the approved oils from AVENTICS. Further information can be found in the “Technical information” document (available in <https://www.emerson.com/en-us/support>).

5/2-directional valve, Series TC08, with detent, double Solenoid

Series
TC08

2024-10-17

R422103052

Dimensions

Double Solenoid

