

# 5/2-directional valve, Series TC08, with detent, double Solenoid

R422103050

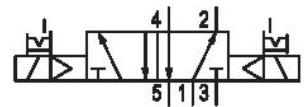
Series  
TC08

2024-10-17

- Excellent ratio of installation space and flow rate
- Large selection of electrical connections
- Electrical or pneumatic operated
- Long service life
- Adjustable coil with four 90° positions

## AVENTICS Series TC08 Directional valves

The AVENTICS Series TC08/TC15 includes a wide range of spool valves with housings made of high-performance polymers with robust and flexible metal inserts. It is designed for flow rate performances from 800 to 1500 l/min. These directional valves are easy to assemble, making them ideal for applications requiring the highest efficiency in limited spaces.



## Technical data

Industry

Industrial

Activation

Electrically

Valve type

Spool valve, positive overlapping

Basic valve equipment

Basic valve without coil

Switching principle

5/2, double solenoid

Actuating control

single

Sealing principle

Soft seal

Connection type

Pipe connection

Manual override

with detent

Compressed air connection input

G 1/8

Compressed air connection output

G 1/8

Compressed air connection, exhaust

G 1/8

Nominal flow Qn

800 l/min

Flow conductance b

0.36

Flow conductance C

3.5 l/(s\*bar)

Min. working pressure

2 bar

# 5/2-directional valve, Series TC08, with detent, double Solenoid

Series  
TC08

2024-10-17

R422103050

Max. working pressure 10 bar

Min. control pressure 2 bar

Max. control pressure 10 bar

Electrical connection type Plug

Electrical connection size ISO 15217, form C

Connector standard ISO 15217

Protection class with connection IP65

Pilot Internal

Coil width 15.6 mm

Pilot valve width 15 mm

Duty cycle 100 %

Typ. switch-on time 10 ms

Typ. switch-off time 10 ms

Min. ambient temperature -10 °C

Max. ambient temperature 50 °C

Min. medium temperature -10 °C

Max. medium temperature 50 °C

Medium Compressed air

Min. oil content of compressed air 0 mg/m<sup>3</sup>

Max. oil content of compressed air 5 mg/m<sup>3</sup>

Max. particle size 5 µm

Mounting on manifold strip P-strip

Mounting screw tightening torque 2 Nm

Weight 0.172 kg

## Material

Housing material Polyamide fiber-glass reinforced

Seal material Acrylonitrile butadiene rubber  
Polyurethane

Material threaded bushing Brass  
Die cast zinc

Material front plate Polyamide fiber-glass reinforced

Part No. R422103050

# 5/2-directional valve, Series TC08, with detent, double Solenoid

R422103050

Series  
TC08

2024-10-17

---

## Technical information

The min. control pressure must be adhered to, since otherwise faulty switching and valve failure may result!

The pressure dew point must be at least 15 °C less than ambient and medium temperature and may not exceed 3 °C.

The oil content of compressed air must remain constant during the life cycle.

Use only the approved oils from AVENTICS. Further information can be found in the “Technical information” document (available in <https://www.emerson.com/en-us/support>).

