

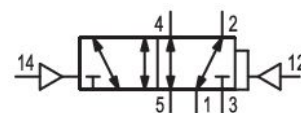
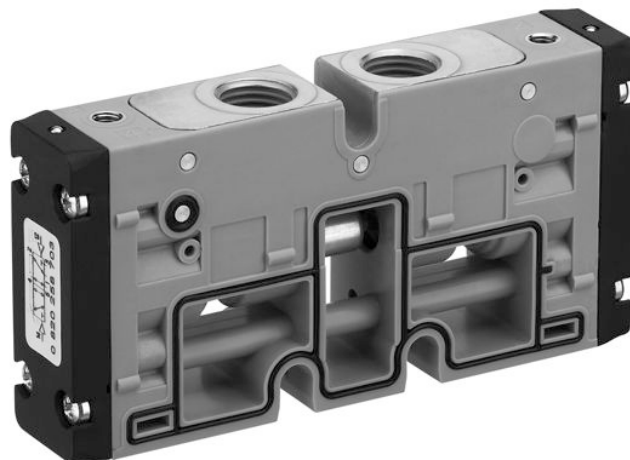
5/2-directional valve, Series TC15

2024-05-06

0820258704

Series TC15

Qn = [[1100] l/min] ... [[1500] l/min]



Technical data

Industry

Industrial

Activation

Pneumatically

Valve type

Spool valve, positive overlapping

Sealing principle

Soft seal

Connection type

Plate connection

Pipe connection

Compressed air connection input

G 1/4

Compressed air connection output

G 1/4

Compressed air connection, exhaust

G 1/4

Compressed air connection pilot input

M5

Nominal flow Qn

1500 l/min

Flow conductance b

0.33

Flow conductance C

6.8 l/(s*bar)

Min. working pressure

-0.9 bar

Max. working pressure

10 bar

Min. control pressure

2.5 bar

5/2-directional valve, Series TC15

2024-05-06

0820258704

| | |
|------------------------------------|---------------------|
| Max. control pressure | 10 bar |
| Pilot | External |
| Blocking principle | Plate principle |
| Min. ambient temperature | -10 °C |
| Max. ambient temperature | 50 °C |
| Min. medium temperature | -10 °C |
| Max. medium temperature | 50 °C |
| Medium | Compressed air |
| Min. oil content of compressed air | 0 mg/m ³ |
| Max. oil content of compressed air | 1 mg/m ³ |
| Max. particle size | 5 µm |
| Rail mounting DIN EN 60715 | TH35 x 15 |
| Weight | 0.159 kg |

Material

| | |
|---------------------------|----------------------------------|
| Housing material | Polyamide fiber-glass reinforced |
| Seal material | Acrylonitrile butadiene rubber |
| Material, front cover | Polyamide fiber-glass reinforced |
| Material threaded bushing | Brass Die cast zinc |
| Surface threaded bushing | chrome-plated nickel-plated |
| Part No. | 0820258704 |

Technical information

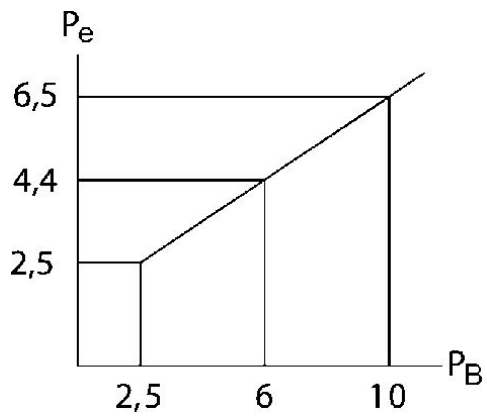
The min. control pressure must be adhered to, since otherwise faulty switching and valve failure may result!

The pressure dew point must be at least 15 °C less than ambient and medium temperature and may not exceed 3 °C.

The oil content of compressed air must remain constant during the life cycle.

Use only the approved oils from AVENTICS. Further information can be found in the "Technical information" document (available in <https://www.emerson.com/en-us/support>).

Control pressure



P_e = external control pressure, min.
 P_B = Working pressure