

Fixed Clevis (MP1 mount)

R432015731

Clevis
mounting

2024-03-26

AVENTICS Clevis mountings

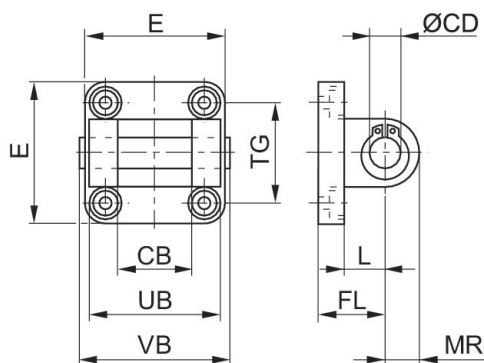


Technical data

Industry	Industrial
Standardization	NFPA
Piston diameter	38.1 mm
Weight	0.2721 kg

Material

Material	Cast Iron
Part No.	R432015731



Fixed Clevis (MP1 mount)

R432015731

Clevis
mounting

2024-03-26

Dimensions in inches

Part No.	Ø	CB H14	Ø CD H9	E	FL	L	MR	UB	VB
R432015731	1.5	0.75	0.500	2.00	0.76	0.38	0.63	-	-
R432015733	2.0	0.75	0.500	2.50	0.76	0.38	0.63	-	-
R432015735	2.5	0.75	0.500	3.00	0.76	0.38	0.63	-	-
R432015737	3.25	1.25	0.750	3.75	1.26	0.63	0.88	-	-
R432015739	4.0	1.25	0.750	4.50	1.26	0.63	0.88	-	-

Part No.	TG
R432015731	-
R432015733	-
R432015735	-
R432015737	-
R432015739	-