

# Fixed Clevis (MP1 mount)

R432015739

Clevis  
mounting

2024-03-26

## AVENTICS Clevis mountings



### Technical data

Industry

Industrial

Standardization

NFPA

Piston diameter

101.6 mm

Weight

1.72 kg

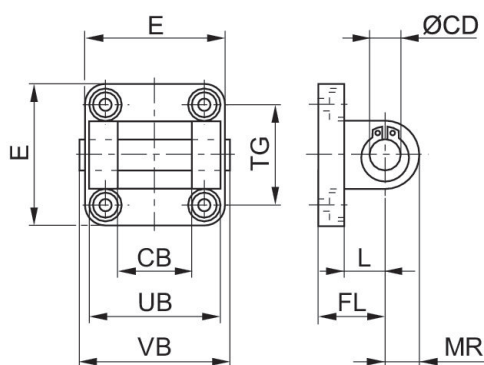
### Material

Material

Cast Iron

Part No.

R432015739



# Fixed Clevis (MP1 mount)

R432015739

Clevis  
mounting

2024-03-26

## Dimensions in inches

Part No.	Ø	CB H14	Ø CD H9	E	FL	L	MR	UB	VB
R432015731	1.5	0.75	0.500	2.00	0.76	0.38	0.63	-	-
R432015733	2.0	0.75	0.500	2.50	0.76	0.38	0.63	-	-
R432015735	2.5	0.75	0.500	3.00	0.76	0.38	0.63	-	-
R432015737	3.25	1.25	0.750	3.75	1.26	0.63	0.88	-	-
R432015739	4.0	1.25	0.750	4.50	1.26	0.63	0.88	-	-

Part No.	TG
R432015731	-
R432015733	-
R432015735	-
R432015737	-
R432015739	-